

ZERO-POINT CLAMPING SYSTEM

CONTENTS

- 16 Quick·Point® **Single Plates**
- 28 Quick·Point® **Multi Plates**
- 34 Quick·Point® **Adaptor Plates**
- 36 Quick·Point® **Risers**
- 40 Quick·Point® **Clamping Towers for
Vertical Machining Centres**
- 44 Quick·Tower **Clamping Tower for
Horizontal Machining Centres**
- 50 Quick·Point® **Accessories**
- 58 **Alignment and Mounting Options**
- 60 Quick·Point® **Service**







Quick·Point® Zero-Point Clamping System

As an interface between the machine table and clamping device, Quick·Point® is offered in a particularly wide range of variations. Round, rectangular or square in shape, for single or multiple clamping, two different stud sizes and spacings (52 mm and 96 mm), Quick·Point® provides a solution for every application. It can be used universally in vertical and horizontal machining centres, on 3- and 5-axis tables and 4th axis rotary or trunnion systems.

The attachment of the zero-point plate to the machine table or faceplate is done easily through prefabricated hole patterns for common t-slot distances, bore patterns and bolt circles or individual, customized mounting options.

→ Reduction of Setup Time

High-precision exchange of clamping devices, fixtures and workpieces within seconds

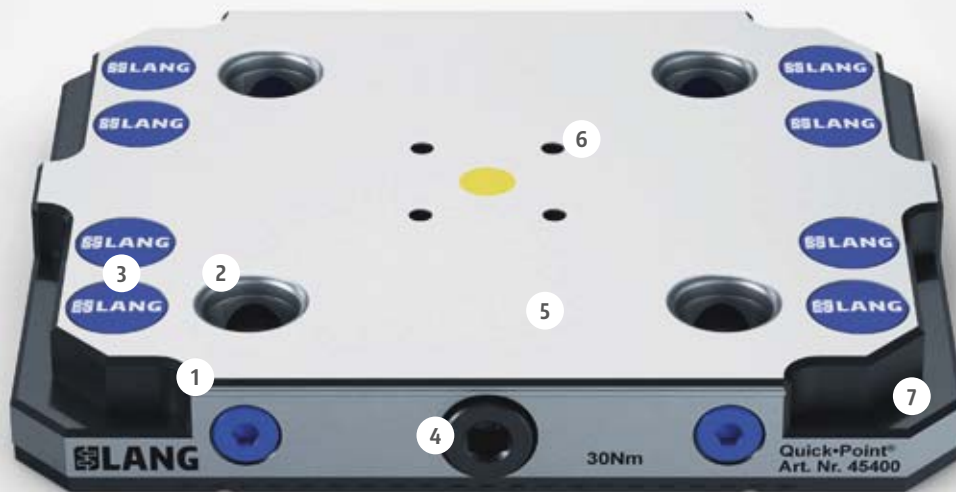
→ Modularity

Enormous variety of combinable zero-point plates, expandable at any time

→ Simplicity

Mechanical clamping via a tightening screw or quick release

Quick-Point® Technology



- 1 With only 27 mm one of the lowest zero-point systems on the market
- 2 Highly precise with < 0.005 mm repeat accuracy
- 3 Cover discs for mounting bores
- 4 Robust mechanical clamping with one actuation screw or Quick-Lock fastener
- 5 Rigid, compact base plate made of case-hardened and ground steel
- 6 4 × M5 threads used as positioning support for vices (added on some plates and options on others)
- 7 Clamping edge as one of a few options to mount the plate to the machine table



- 8 Ø12F5 fitting for concentric alignment, centring studs now also available (page 57)
- 9 Coolant drainage
- 10 20H7 keyways for axial alignment



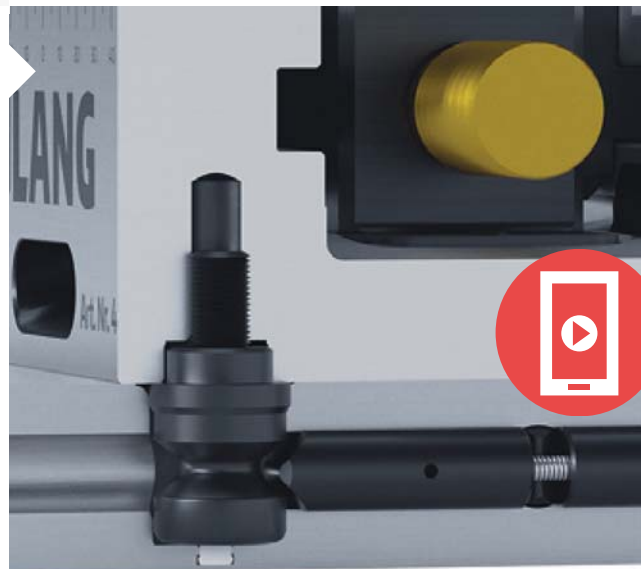
Robust, wear-free mechanism for highest longevity

By design Quick-Point® is a purely mechanical zero-point system. A patented rod system inside the plate guarantees a repeatability of less than 0.005 mm. Quick-Point® plates are actuated by one screw or the Quick-Lock device to ensure simple and easy operation.

Due to a very small number of wear-free parts the system is reliable and virtually maintenance free.

Holding force of up to 6.000 kg

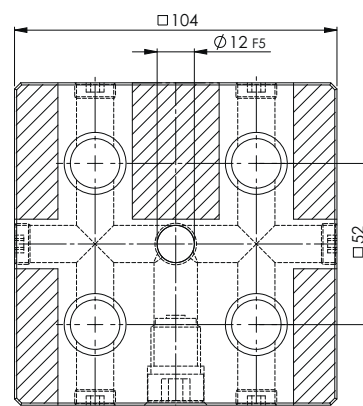
The mechanical clamping concept is very simple. The picture shows a cross-section of the Quick-Point® bore where the clamping studs are pulled down by lateral clamping rods. With an actuation torque of only 30 Nm (60 Nm for 4-fold grid plates 52 & 96) a holding force of up to 1.500 kg per clamping stud is achieved. As an example, this results in a holding force of 6.000 kg when clamping a Makro-Grip® 5-Axis Vice 125. If more clamping studs are used (e.g. using your own or bigger fixtures), the holding force is increased accordingly.



Flexibility has no limits!

The flexible Quick-Point® zero-point clamping system qualifies for a vast number of applications in vertical and horizontal machining centres and covers almost all clamping needs on 3-/5-axis tables or 4th axis rotary and trunnion systems. The modularity of the system allows for the expansion of existing Quick-Point® fixtures at any time and guarantees fast changeovers with the highest precision. Accessories such as Quick-Lock and/or risers can upgrade the usability and functionality enormously.

Quick-Point® Single Plates



QUICK-POINT® 52, GRID PLATE 104 × 104 × 27 MM, WITHOUT MOUNTING BORES



30 Nm



Ø 16 mm



77



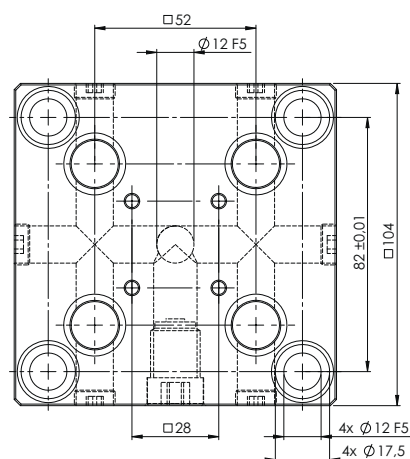
✓



✓

ITEM NO.	DIMENSIONS	WEIGHT	PRICE
45600	104 × 104 × 27 mm	2.0 kg	
45004	Set mounting bores according to customer's request		
45002	Set keyways according to customer's request		

Suitable Quick-Lock: Item No. 44552 (page 54)



30 Nm



Ø 16 mm



77



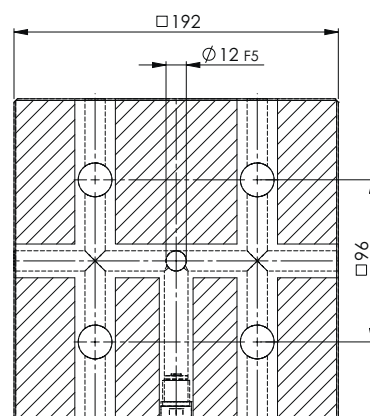
✓

QUICK-POINT® 52, GRID PLATE 104 × 104 × 27 MM, WITH MOUNTING BORES FOR QUICK-TOWER

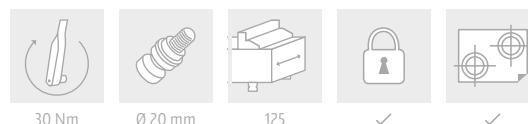
ITEM NO.	DIMENSIONS	MOUNTING BORES	WEIGHT	PRICE
75600	104 × 104 × 27 mm	82 × 82 mm	1.8 kg	

This Grid Plate can also be found on page 42 & 48.

Suitable Quick-Lock: Item No. 44552 (page 54)

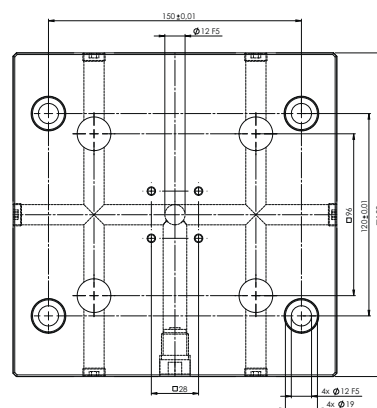


QUICK-POINT® 96, GRID PLATE 192 × 192 × 27 MM, WITHOUT MOUNTING BORES

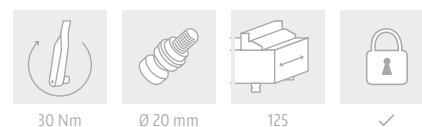


ITEM NO.	DIMENSIONS	WEIGHT	PRICE
45710	192 × 192 × 27 mm	7.2 kg	
45004	Set mounting bores according to customer's request		
45002	Set keyways according to customer's request		

Suitable Quick-Lock: Item No. 44596 (page 54)



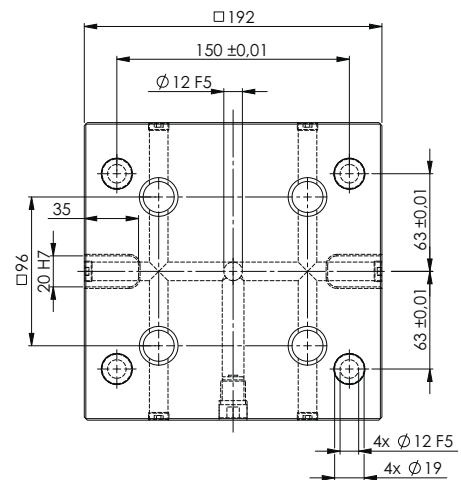
QUICK-POINT® 96, GRID PLATE 192 × 192 × 27 MM, WITH MOUNTING BORES FOR QUICK-TOWER



ITEM NO.	DIMENSIONS	MOUNTING BORES	WEIGHT	PRICE
75710	192 × 192 × 27 mm	150 × 120 mm	7.0 kg	

This Grid Plate can also be found on page 49.
Suitable Quick-Lock: Item No. 44596 (page 54)

Quick-Point® Single Plates

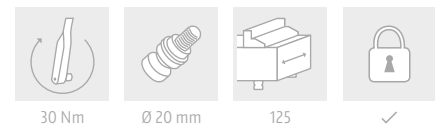


QUICK-POINT® 96, GRID PLATE

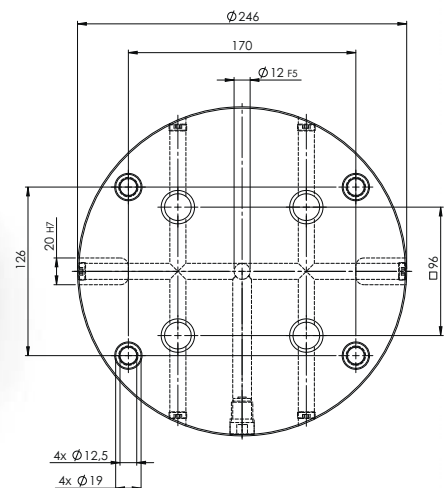
192 × 192 × 27 MM, WITH MOUNTING BORES FOR 63 MM T-SLOT DISTANCE

ITEM NO.	DIMENSIONS	MOUNTING BORES	WEIGHT	PRICE
45763	192 × 192 × 27 mm	for 63 mm t-slot distance	7.0 kg	

Suitable Quick-Lock: Item No. 44596 (page 54)



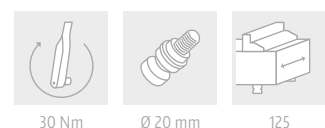
NEW

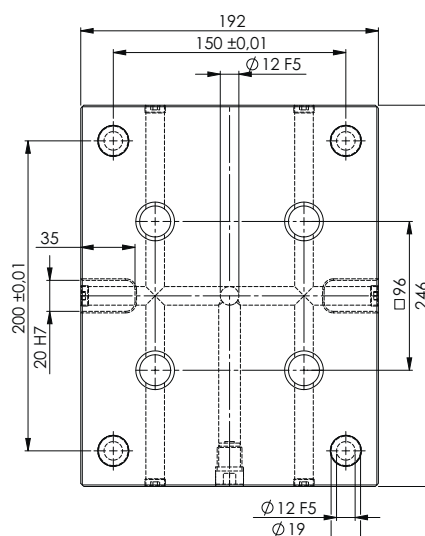


QUICK-POINT® 96, ROUND PLATE

Ø 246 × 27 MM, WITH MOUNTING BORES FOR 63 MM T-SLOT DISTANCE

ITEM NO.	DIMENSIONS	MOUNTING BORES	WEIGHT	PRICE
45863	Ø 246 × 27 mm	for 63 mm t-slot distance	9.3 kg	

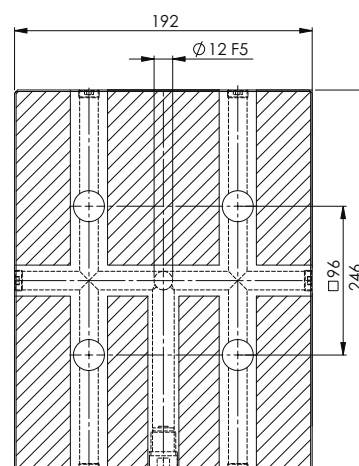
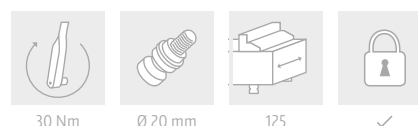




QUICK-POINT® 96, EXTENDED GRID PLATE 246 × 192 × 27 MM, WITH MOUNTING BORES FOR 100 MM T-SLOT DISTANCE

ITEM NO.	DIMENSIONS	MOUNTING BORES	WEIGHT	PRICE
45715	246 × 192 × 27 mm	for 100 mm t-slot distance	9.2 kg	

Suitable Quick-Lock: Item No. 44596 (page 54)



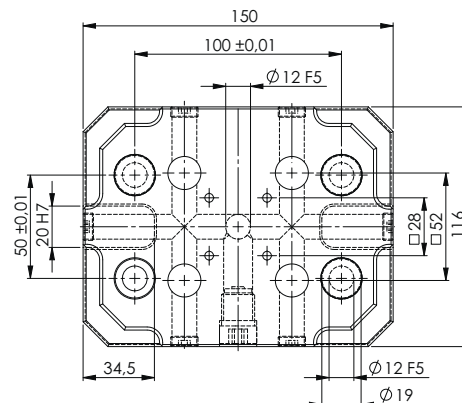
QUICK-POINT® 96, EXTENDED GRID PLATE 246 × 192 × 27 MM, WITHOUT MOUNTING BORES

ITEM NO.	DIMENSIONS	WEIGHT	PRICE
45716	246 × 192 × 27 mm	9.4 kg	
45004	Set mounting bores according to customer's request		
45002	Set keyways according to customer's request		

Suitable Quick-Lock: Item No. 44596 (page 54)



Quick-Point® Single Plates



30 Nm



Ø 16 mm



77

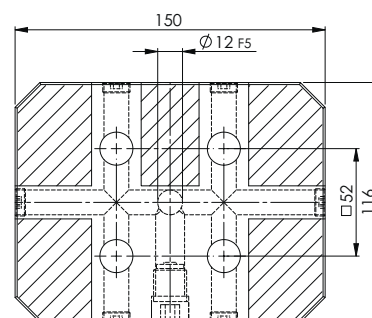


✓

QUICK-POINT® 52, RECTANGULAR PLATE 150 × 116 × 27 MM, WITH CLAMPING EDGE & MOUNTING BORES

ITEM NO.	DIMENSIONS	MOUNTING BORES	WEIGHT	PRICE
45150	150 × 116 × 27 mm	100 × 50 mm	2.9 kg	

Suitable Quick-Lock: Item No. 44552 (page 54)



30 Nm



Ø 16 mm



77



✓

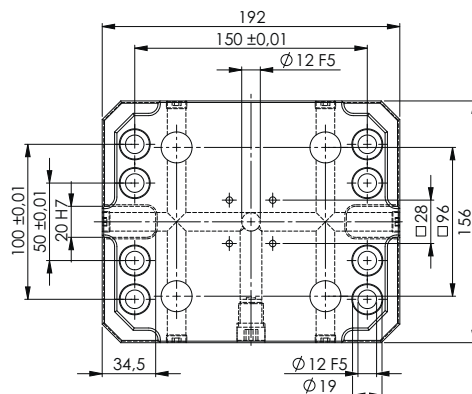


✓

QUICK-POINT® 52, RECTANGULAR PLATE 150 × 116 × 27 MM, WITHOUT CLAMPING EDGE & MOUNTING BORES

ITEM NO.	DIMENSIONS	WEIGHT	PRICE
45151	150 × 116 × 27 mm	3.4 kg	
45004	Set mounting bores according to customer's request		
45002	Set keyways according to customer's request		

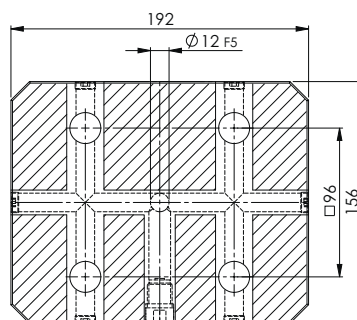
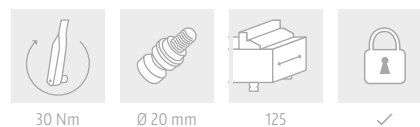
Suitable Quick-Lock: Item No. 44552 (page 54)



QUICK-POINT® 96, RECTANGULAR PLATE 192 × 156 × 27 MM, WITH CLAMPING EDGE & MOUNTING BORES

ITEM NO.	DIMENSIONS	MOUNTING BORES	WEIGHT	PRICE
45400	192 × 156 × 27 mm	150 × 100 / 50 mm	5.5 kg	

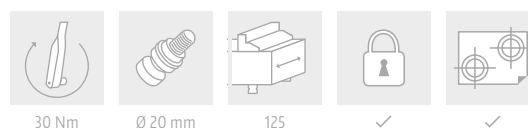
Suitable Quick-Lock: Item No. 44596 (page 54)



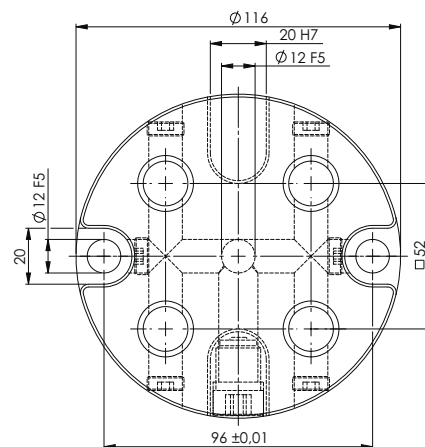
QUICK-POINT® 96, RECTANGULAR PLATE 192 × 156 × 27 MM, WITHOUT CLAMPING EDGE & MOUNTING BORES

ITEM NO.	DIMENSIONS	WEIGHT	PRICE
45401	192 × 156 × 27 mm	6.0 kg	
45004	Set mounting bores according to customer's request		
45002	Set keyways according to customer's request		

Suitable Quick-Lock: Item No. 44596 (page 54)



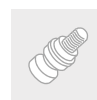
Quick-Point® Single Plates



QUICK-POINT® 52, ROUND PLATE Ø 116 × 27 MM



30 Nm

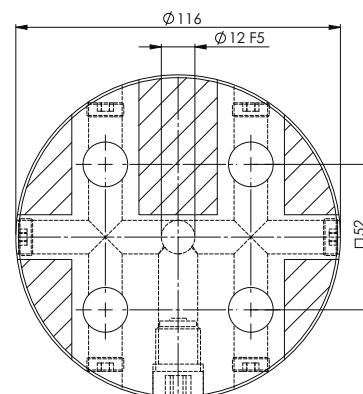


Ø 16 mm



77

ITEM NO.	DIMENSIONS	MOUNTING BORES	WEIGHT	PRICE
45750	Ø 116 × 27 mm	96 mm distance	1.9 kg	



QUICK-POINT® 52, ROUND PLATE Ø 116 × 27 MM, WITHOUT MOUNTING BORES



30 Nm



Ø 16 mm

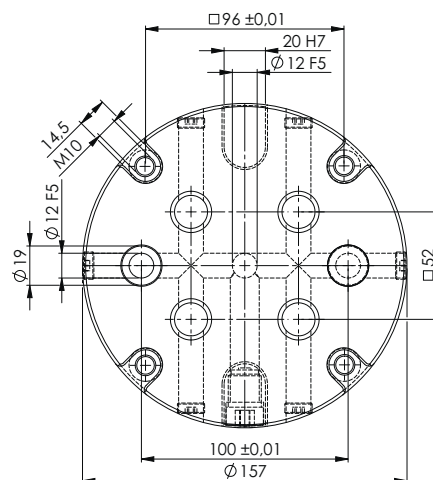


77



✓

ITEM NO.	DIMENSIONS	WEIGHT	PRICE
45751	Ø 116 × 27 mm	2.1 kg	
45004	Set mounting bores according to customer's request		
45002	Set keyways according to customer's request		



30 Nm



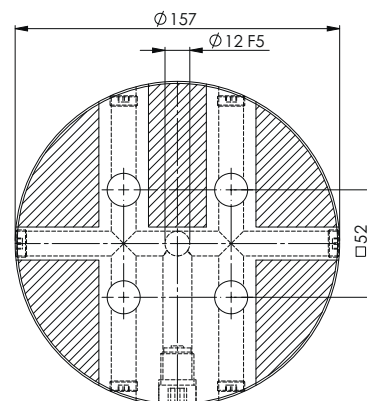
Ø 16 mm



77

QUICK-POINT® 52, ROUND PLATE Ø 157 × 27 MM

ITEM NO.	DIMENSIONS	MOUNTING BORES	WEIGHT	PRICE
45900	Ø 157 × 27 mm	100 mm distance	3.5 kg	



30 Nm



Ø 16 mm



77

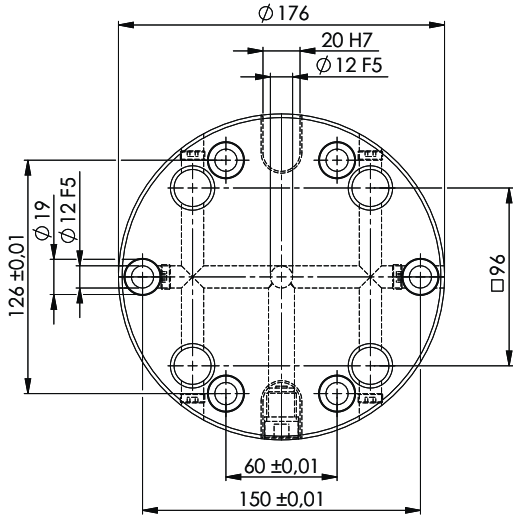


✓

QUICK-POINT® 52, ROUND PLATE Ø 157 × 27 MM, WITHOUT MOUNTING BORES

ITEM NO.	DIMENSIONS	WEIGHT	PRICE
45901	Ø 157 × 27 mm	3.8 kg	
45004	Set mounting bores according to customer's request		
45002	Set keyways according to customer's request		

Quick-Point® Single Plates



QUICK-POINT® 96, ROUND PLATE
Ø 176 × 27 MM

ITEM NO.	DIMENSIONS	MOUNTING BORES	WEIGHT	PRICE
45800	Ø 176 × 27 mm	for 63 mm t-slot distance & 150 mm distance	4.7 kg	



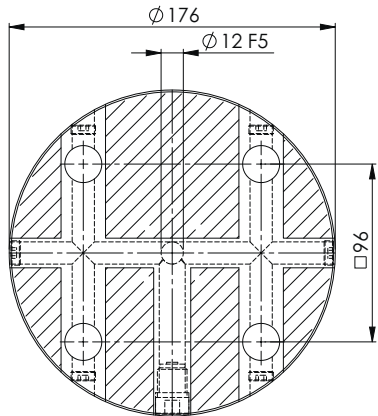
30 Nm



Ø 20 mm



125



QUICK-POINT® 96, ROUND PLATE
Ø 176 × 27 MM, WITHOUT MOUNTING BORES

ITEM NO.	DIMENSIONS	WEIGHT	PRICE
45801	Ø 176 × 27 mm	4.8 kg	
45004	Set mounting bores according to customer's request		
45002	Set keyways according to customer's request		



30 Nm



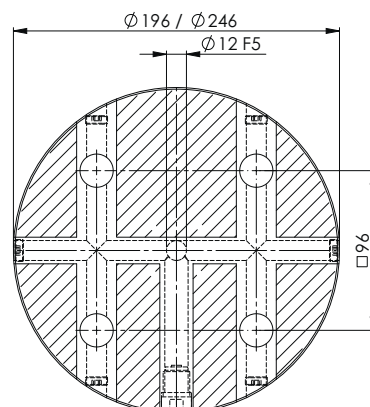
Ø 20 mm



125



✓



30 Nm



Ø 20 mm



125

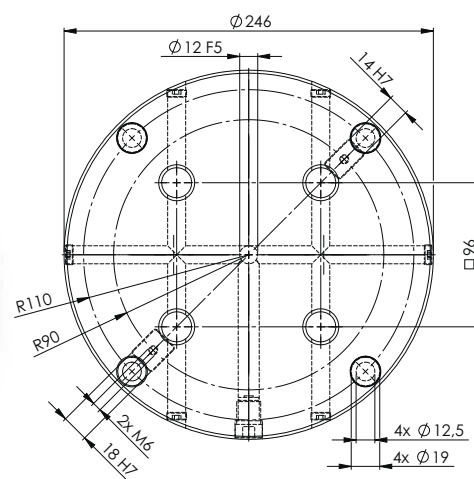


✓

QUICK-POINT® 96, ROUND PLATES

Ø 196 / 246 × 27 MM, WITHOUT MOUNTING BORES

ITEM NO.	DIMENSIONS	WEIGHT	PRICE
45820	Ø 196 × 27 mm	6.0 kg	
45840	Ø 246 × 27 mm	9.5 kg	
45004	Set mounting bores according to customer's request		
45002	Set keyways according to customer's request		



30 Nm



Ø 20 mm



125

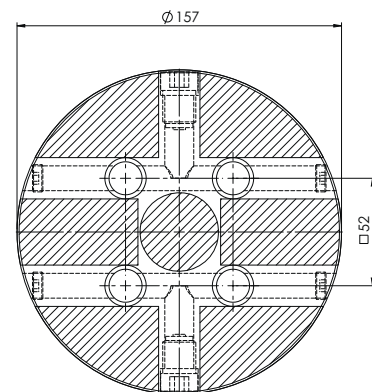
QUICK-POINT® 96, ROUND PLATE

Ø 246 × 27 MM, WITH MOUNTING BORES FOR TABLES WITH 90° GROOVES

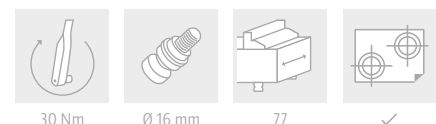
ITEM NO.	DIMENSIONS	MOUNTING BORES	WEIGHT	PRICE
45890	Ø 246 × 27 mm	4 × 90° / Radius 110 mm	9.3 kg	

Suitable slot keys: Item No. 452214 / 442218 (page 57)

Quick-Point® Single Plates for individual centre bore



QUICK-POINT® 52, ROUND PLATE Ø 157 × 27 MM, FOR INDIVIDUAL CENTRE BORE



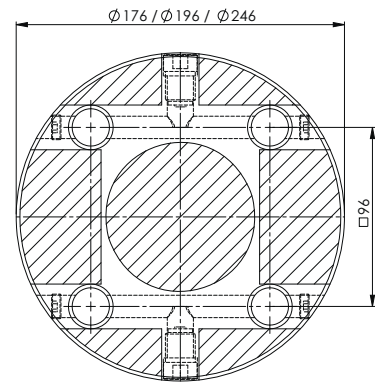
ITEM NO.	DIMENSIONS	MAX. Ø CENTRE BORE	WEIGHT	PRICE
45903	Ø 157 × 27 mm	38 mm	3.7 kg	
45004	Set mounting bores according to customer's request			
45002	Set keyways according to customer's request			
45009	Set centre bore according to customer's request			

Possible Modification of Quick-Point® Plate 45903



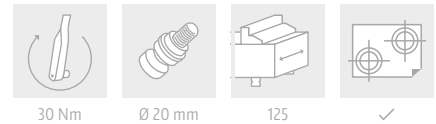
- 1 × Centre bore Ø 38 mm
- 1 × Keyway 20H7
- 4 × Mounting bores for M8 screws, incl. step for Ø 15 mm cover discs, for machine tables with 6 × 60° grooves

A centre bore with individually selectable diameter and tolerance provides the option for access to rotary joints.



QUICK-POINT® 96, ROUND PLATES

Ø 176 / 196 / 246 × 27 MM, FOR INDIVIDUAL CENTRE BORE



ITEM NO.	DIMENSIONS	MAX. Ø CENTRE BORE	WEIGHT	PRICE
45803	Ø 176 × 27 mm	80 mm	4.8 kg	
45823	Ø 196 × 27 mm	80 mm	6.0 kg	
45843	Ø 246 × 27 mm	80 mm	9.5 kg	
45004	Set mounting bores according to customer's request			
45002	Set keyways according to customer's request			
45009	Set centre bore according to customer's request			

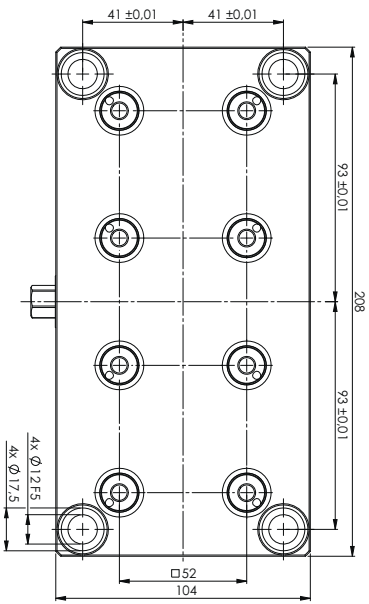
Possible Modification of Quick-Point® Plate 45823




- 1 × Centre bore Ø 80 mm
- 1 × 130H6 tapered fitting
- 4 × Mounting bores for M12 screws, incl. step for Ø 20 mm cover discs, for machine tables with 6 × 60° grooves

Quick-Point® Multi Plates


NEW




QUICK-POINT® 52, 2-FOLD GRID PLATE
208 × 104 × 27 MM




30 Nm



Ø 16 mm



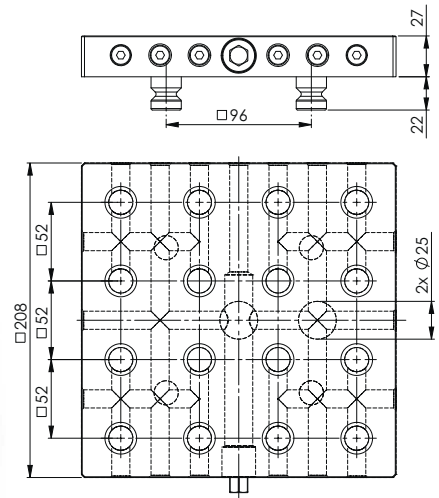
77



✓

ITEM NO.	DIMENSIONS	MOUNTING BORES	WEIGHT	PRICE
45621	208 × 104 × 27 mm	186 × 82 mm	4.0 kg	

Suitable Quick-Lock: Item No. 45252 (page 54)

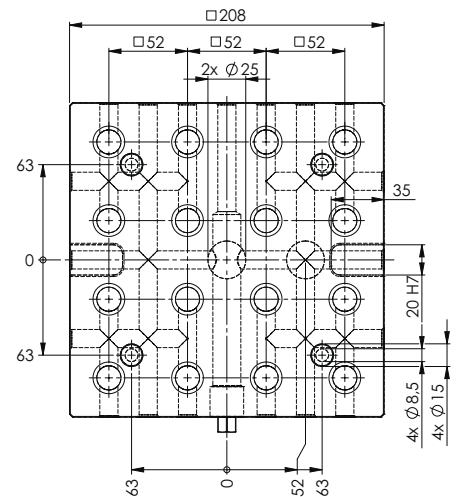


QUICK-POINT® 52, 4-FOLD GRID PLATE 208 × 208 × 27 MM, WITHOUT MOUNTING BORES

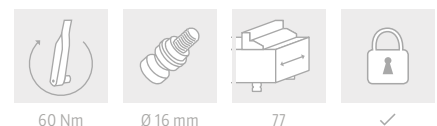


ITEM NO.	DIMENSIONS	WEIGHT	PRICE
45640	208 × 208 × 27 mm	8.2 kg	
45644	Set mounting bores according to customer's request		
45642	Set keyways according to customer's request		

Included in delivery: 4 × Quick-Point clamping studs Ø 20 mm, for adapting the plate to the Quick-Point® 96 system
Suitable Quick-Lock: Item No. 45452 (page 54)



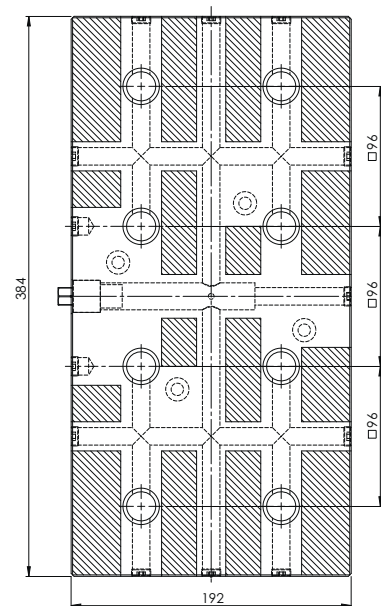
QUICK-POINT® 52, 4-FOLD GRID PLATE 208 × 208 × 27 MM, WITH MOUNTING BORES FOR 63 MM T-SLOT DISTANCE



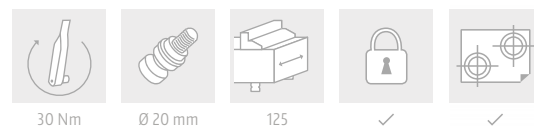
ITEM NO.	DIMENSIONS	MOUNTING BORES	WEIGHT	PRICE
45641	208 × 208 × 27 mm	for 63 mm t-slot distance	8.0 kg	

Suitable Quick-Lock: Item No. 45452 (page 54)

Quick-Point® Multi Plates



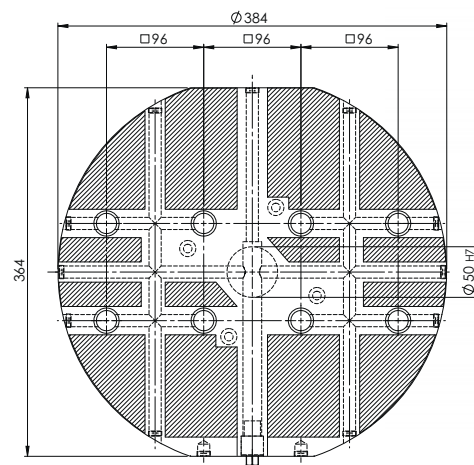
QUICK-POINT® 96, 2-FOLD GRID PLATE 384 × 192 × 27 MM, WITHOUT MOUNTING BORES



ITEM NO.	DIMENSIONS	WEIGHT	PRICE
45720	384 × 192 × 27 mm	14.7 kg	
45024	Set mounting bores according to customer's request		
45022	Set keyways according to customer's request		

Suitable Quick-Lock: Item No. 45296 (page 54)

NEW



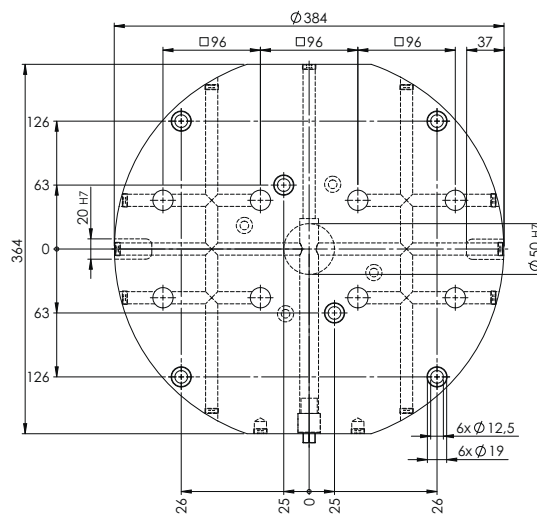
QUICK-POINT® 96, 2-FOLD GRID PLATE, ROUND Ø 384 × 27 MM, WITHOUT MOUNTING BORES



ITEM NO.	DIMENSIONS	WEIGHT	PRICE
45962	Ø 384 × 27 mm	22.8 kg	
45044	Set mounting bores according to customer's request		
45042	Set keyways according to customer's request		

Suitable Quick-Lock: Item No. 45996 (page 54)

NEW



30 Nm



Ø 20 mm



125



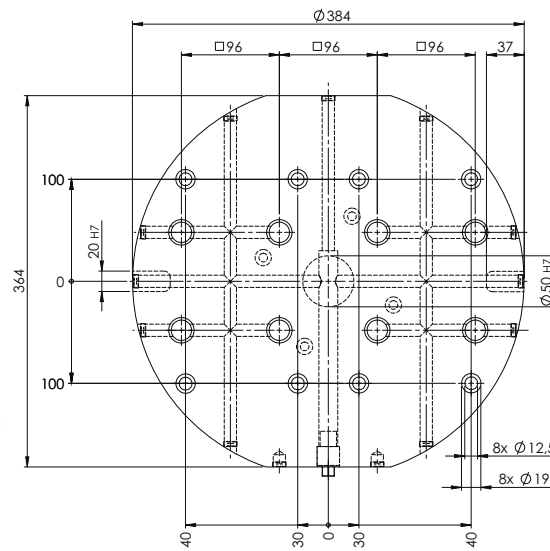
✓

QUICK-POINT® 96, 2-FOLD GRID PLATE, ROUND
Ø 384 × 27 mm, WITH MOUNTING BORES FOR 63 MM T-SLOT DISTANCE

ITEM NO.	DIMENSIONS	MOUNTING BORES	WEIGHT	PRICE
45963	Ø 384 × 27 mm	for 63 mm t-slot distance	22.4 kg	

Suitable Quick-Lock: Item No. 45996 (page 54)

NEW



30 Nm



Ø 20 mm



125



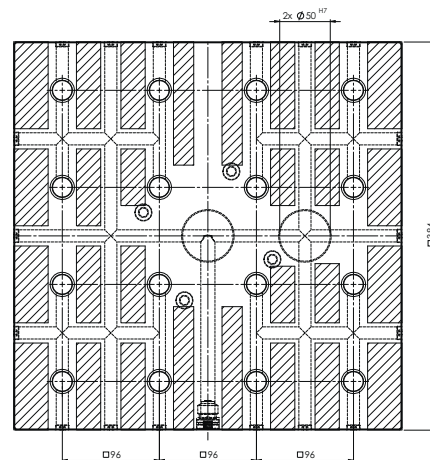
✓

QUICK-POINT® 96, 2-FOLD GRID PLATE, ROUND
Ø 384 × 27 mm, WITH MOUNTING BORES FOR 100 MM T-SLOT DISTANCE

ITEM NO.	DIMENSIONS	MOUNTING BORES	WEIGHT	PRICE
45964	Ø 384 × 27 mm	for 100 mm t-slot distance	22.4 kg	

Suitable Quick-Lock: Item No. 45996 (page 54)

Quick-Point® Multi Plates



QUICK-POINT® 96, 4-FOLD GRID PLATE 384 × 384 × 27 MM, WITHOUT MOUNTING BORES



60 Nm



Ø 20 mm



125



✓

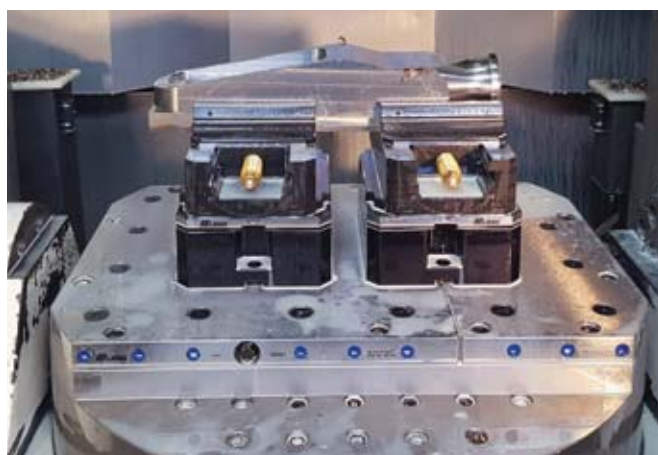


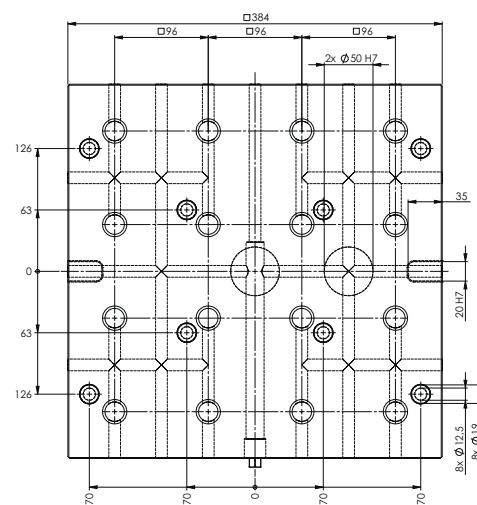
✓

ITEM NO.	DIMENSIONS	WEIGHT	PRICE
45740	384 × 384 × 27 mm	29.7 kg	
45044	Set mounting bores according to customer's request		
45042	Set keyways according to customer's request		

Suitable Quick-Lock: Item No. 45496 (page 54)

Applications





60 Nm



Ø 20 mm



125



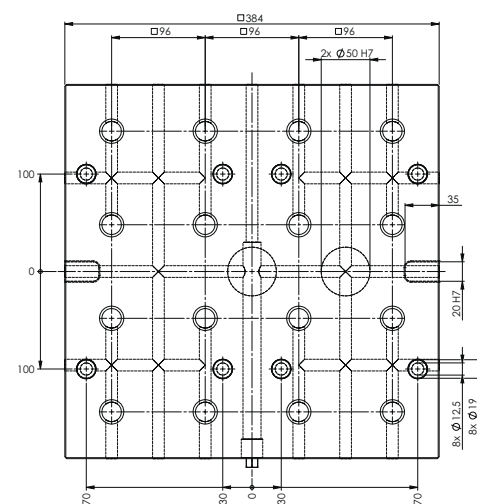
✓

QUICK-POINT® 96 4-FOLD GRID PLATE

384 × 384 × 27 MM, WITH MOUNTING BORES FOR 63 MM T-SLOT DISTANCE

ITEM NO.	DIMENSIONS	MOUNTING BORES	WEIGHT	PRICE
45741	384 × 384 × 27 mm	for 63 mm t-slot distance	29.2 kg	

Suitable Quick-Lock: Item No. 45496 (page 54)



60 Nm



Ø 20 mm



125



✓

QUICK-POINT® 96, 4-FOLD GRID PLATE

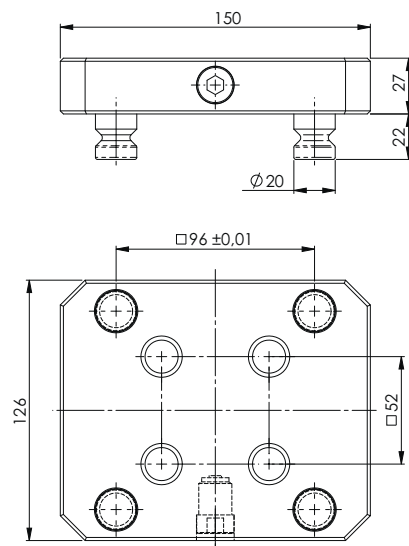
384 × 384 × 27 MM, WITH MOUNTING BORES FOR 100 MM T-SLOT DISTANCE

ITEM NO.	DIMENSIONS	MOUNTING BORES	WEIGHT	PRICE
45742	384 × 384 × 27 mm	for 100 mm t-slot distance	29.2 kg	

Suitable Quick-Lock: Item No. 45496 (page 54)

Quick-Point® Adaptor Plates

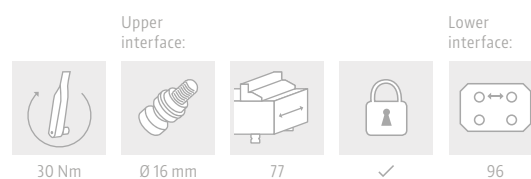
Utilise the modularity of the zero-point clamping system by quickly reducing from 96 mm to 52 mm stud spacings with these adaptor plates.



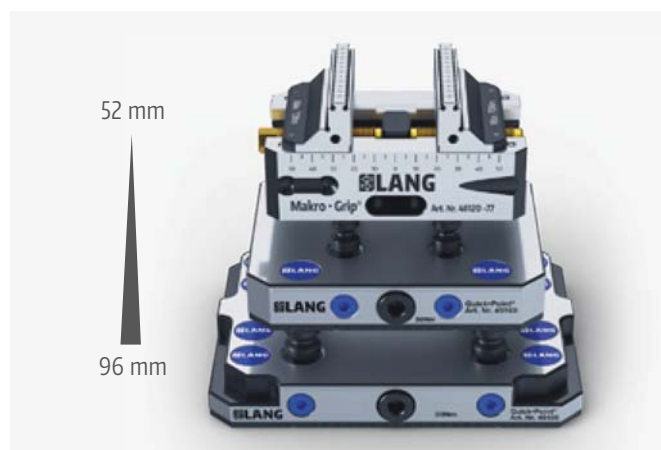
QUICK-POINT® ADAPTOR PLATE 150 × 126 × 27 MM

ITEM NO.	DIMENSIONS	WEIGHT	PRICE
45160	150 × 126 × 27 mm	3.4 kg	

Suitable Quick-Lock: Item No. 44552 (page 54)

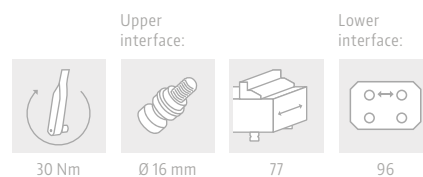
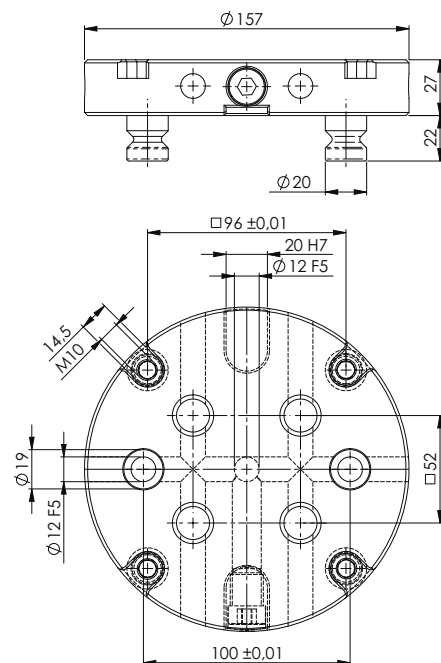


Applications

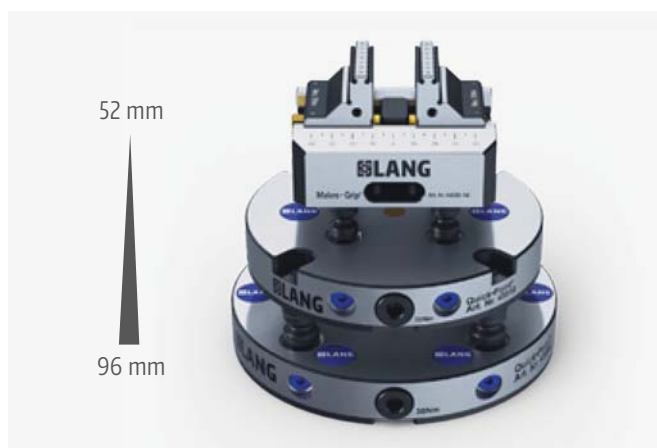




QUICK-POINT® ADAPTOR PLATE, ROUND
Ø 157 × 27 MM

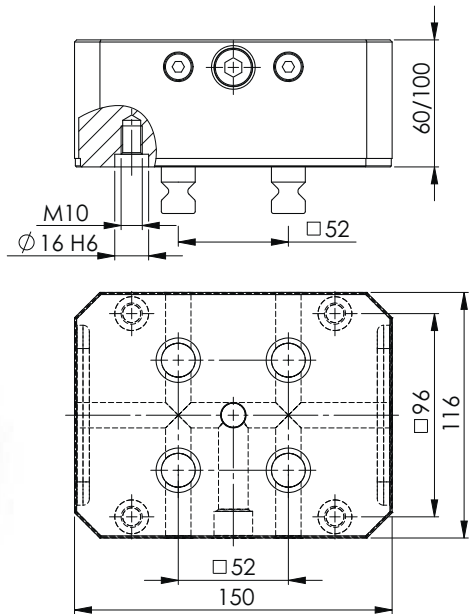


ITEM NO.	DIMENSIONS	WEIGHT	PRICE
45910	Ø 157 × 27 mm	3.7 kg	



Quick-Point® 5-Axis Risers

Increase accessibility to workpieces on 5-axis machine tools with these risers. With no additional interface between the solid riser and the vice, improved rigidity is provided.



Upper interface:

Lower interface:



30 Nm

Ø 16 mm

77

52/96

QUICK-POINT® 52, 5-AXIS RISER

ITEM NO.	DIMENSIONS	WEIGHT	PRICE
45156	150 × 116 × 60 mm	6.1 kg	
45157	150 × 116 × 100 mm	10.0 kg	

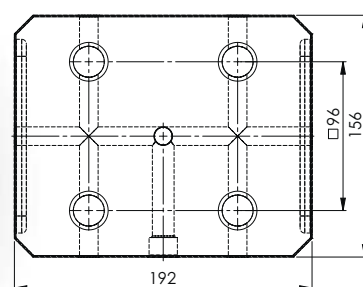
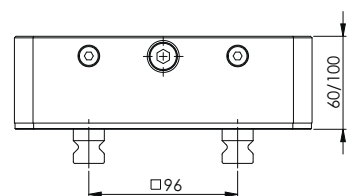
Included: 4 × Quick-Point® clamping studs Ø 16 mm.
Suitable Quick-Lock: Item No. 44552 (page 54).

Applications



This riser also features bores for Ø 20 mm clamping studs to use it as an adaptor for the 96 mm grid system.





Upper interface:

Lower interface:



30 Nm

Ø 20 mm

125

96

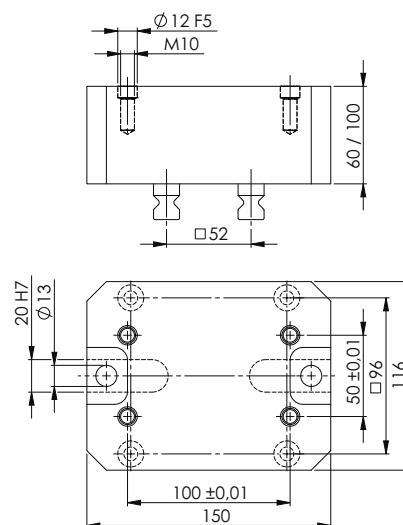
QUICK-POINT® 96, 5-AXIS RISER

ITEM NO.	DIMENSIONS	WEIGHT	PRICE
45406	192 × 156 × 60 mm	11.2 kg	
45407	192 × 156 × 100 mm	18.1 kg	

Included: 4 × Quick-Point® clamping studs Ø 20 mm.
Suitable Quick-Lock: Item No. 44596 (page 54).



Quick-Point® Risers



Upper interface:

 $\varnothing 16$ mm

Lower interface:



77



52/96

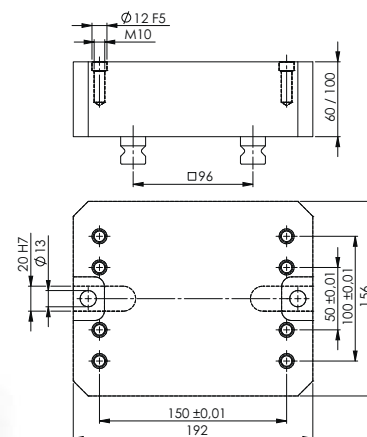
QUICK-POINT® 52, RISER

ITEM NO.	DIMENSIONS	WEIGHT	PRICE
43060	150 × 116 × 60 mm	2.5 kg	
43100	150 × 116 × 100 mm	4.2 kg	

Suitable for Quick-Point® Plate, Item No. 45150.

Included: 4 × Quick-Point® clamping studs $\varnothing 16$ mm, 4 screws M 10 + 2 bushings $\varnothing 12 \times 12$ mm (Item No. 45000-09).

This riser also features bores for $\varnothing 20$ mm clamping studs to use it as an adaptor for the 96 mm grid system.



Upper interface:

 $\varnothing 20$ mm

Lower interface:



125



96

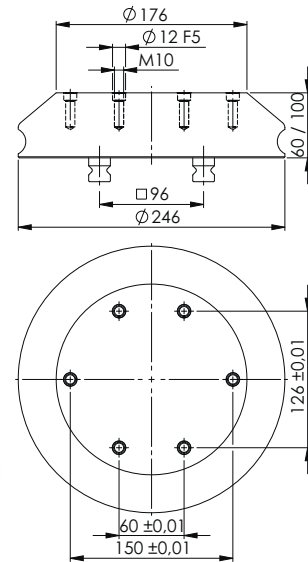
QUICK-POINT® 96, RISER

ITEM NO.	DIMENSIONS	WEIGHT	PRICE
44060	192 × 156 × 60 mm	4.7 kg	
44100	192 × 156 × 100 mm	7.9 kg	

Suitable for Quick-Point® Plate, Item No. 45400.

Included: 4 × Quick-Point® clamping studs $\varnothing 20$ mm, 4 screws M 10 + 2 bushings $\varnothing 12 \times 12$ mm (Item No. 45000-09).

Increase accessibility to workpieces on 5-axis machine tools. The coated aluminium body can either be mounted directly on the machine table or by a Quick-Point® plate. The lateral recess can be used for fixation, the alignment is done with 20H7 keyways. Alternatively it can be clamped onto zero-point clamping systems with 4 clamping studs.



Upper interface:



Ø 20 mm

Lower interface:



125



96

QUICK-POINT® 96, RISER, ROUND

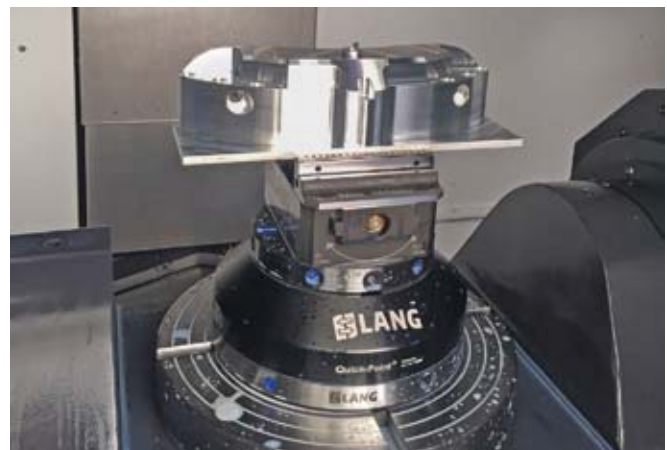
ITEM NO.	HEIGHT	DIAMETER	WEIGHT	PRICE
44006	60 mm	bottom: 246 mm, top: 176 mm	6.6 kg	
44010	100 mm	bottom: 246 mm, top: 176 mm	11.8 kg	

Suitable for Quick-Point® plate Item No. 45800.

Included: 4 × Quick-Point® clamping studs Ø 20 mm, 6 screws M 10 + 2 bushings Ø 12 × 12 mm (Item No. 45000-09).

Individual mounting bores in the area of the flange possible.

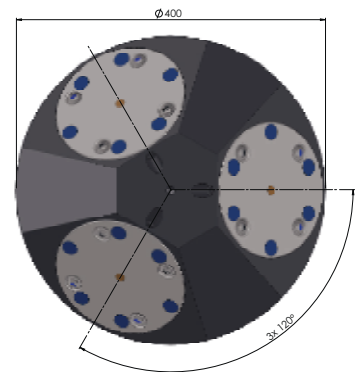
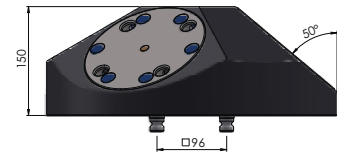
Applications



Quick-Point® 3-face Pyramid

The high-strength, aluminium 3-face Pyramid with integrated Quick-Point® round plates is designed for increasing the run time of 5-axis machine tools.

NEW



Upper interface:



30 Nm



Ø 20 mm



125

Lower interface:

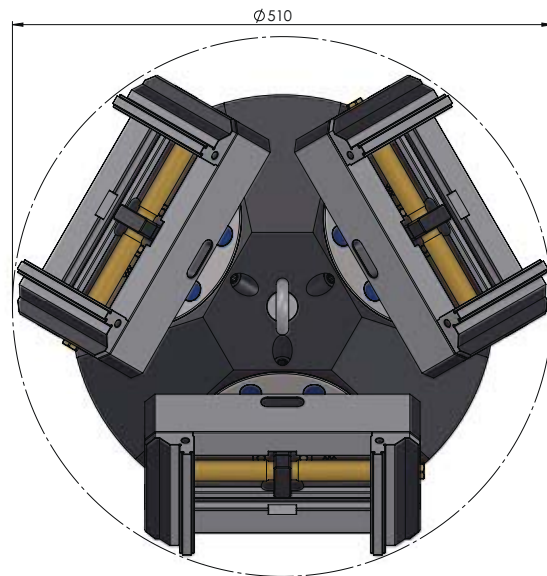
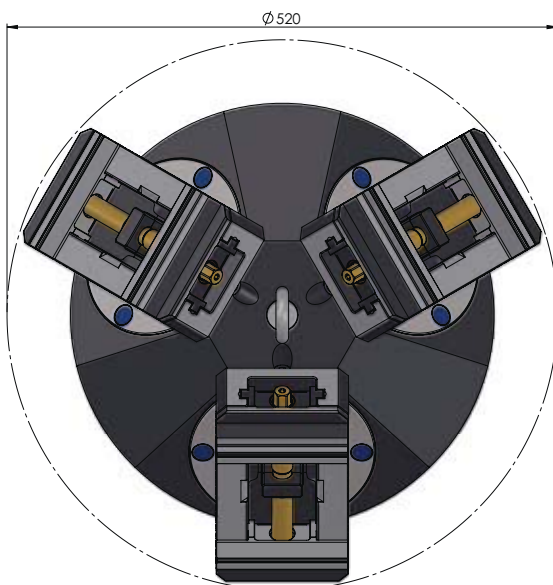


96

QUICK-POINT® 96, 3-FACE PYRAMID

ITEM NO.	DIMENSIONS	WEIGHT	PRICE
43400	Ø 400 × 150 mm	43.0 kg	

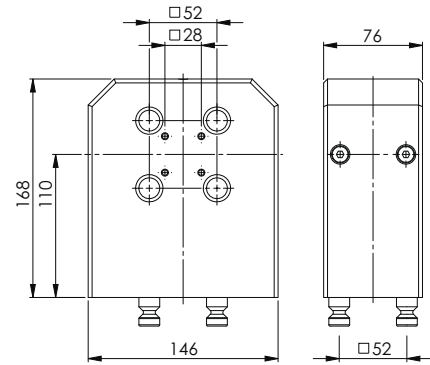
Included: 4 × Quick-Point® clamping studs Ø 20 mm



The 3-face Pyramid can accept Makro-Grip® 5-Axis Vices 125 with a maximum length of 210 mm when mounted vertically (left), whereas the maximum length is 260 mm when mounted horizontally (right).

Quick-Point® Twin Base

The hardened and ground Twin Base is ideal for manufacturing 5-axis parts with a 3-axis machine tool. Workpieces can be positioned $4 \times 90^\circ$ safely and with a high repeat accuracy.



Upper interface:



30 Nm



Ø 16 mm



77

Lower interface:

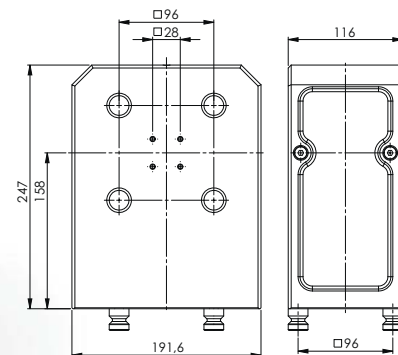


52

QUICK-POINT® 52, TWIN BASE

ITEM NO.	DIMENSIONS	WEIGHT	PRICE
47220	146 × 76 × 168 mm	13.9 kg	

Suitable Quick-Lock: Item No. 44552 (page 54)



Upper interface:



30 Nm



Ø 20 mm



125

Lower interface:



96

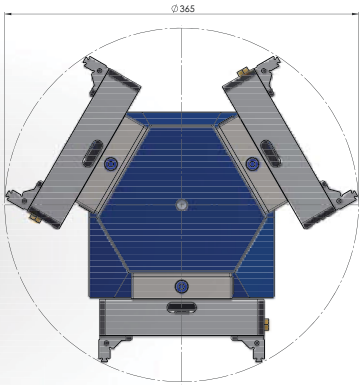
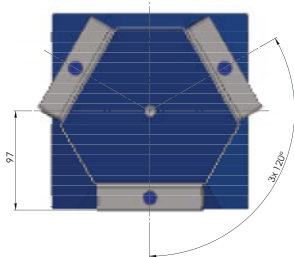
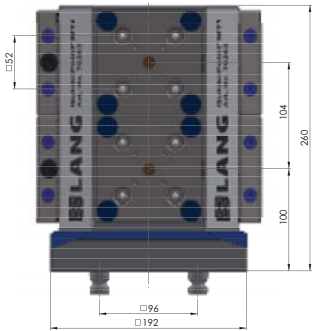
QUICK-POINT® 96, TWIN BASE

ITEM NO.	DIMENSIONS	WEIGHT	PRICE
47520	192 × 116 × 247 mm	27.8 kg	

Suitable Quick-Lock: Item No. 44596 (page 54)

Quick-Point® MT3 3-face Tombstone

NEW



96

The 3-face Tombstone can accept all vices with a jaw width of 46 and 77 mm when mounted horizontally.

QUICK-POINT® MT3, 3-FACE TOMBSTONE

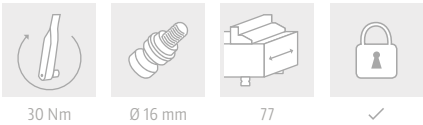
ITEM NO.	DIMENSIONS	MAX. QTY OF GRID PLATES	WEIGHT	PRICE
70263	192 × 192 × 260 mm	6 × 75600 or 3 × 45621	44.8 kg	

Included: 4 × Quick-Point® clamping studs Ø 20 mm

Suitable Quick-Point® Plate for both Tombstones:



QUICK-POINT® 52 GRID PLATE, 104 × 104 × 27 MM

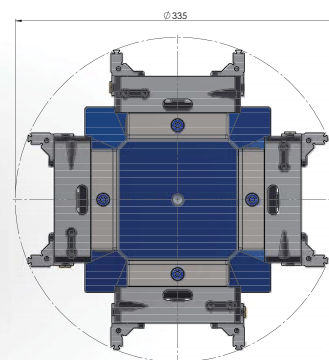
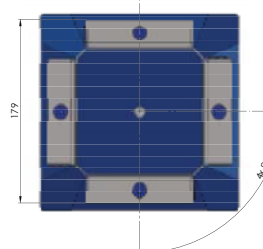
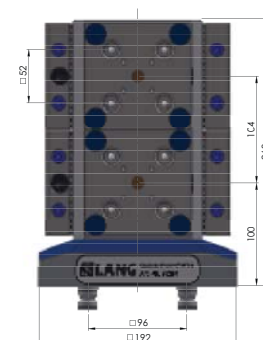


ITEM NO.	DIMENSIONS	MOUNTING BORES	WEIGHT	PRICE
75600	104 × 104 × 27 mm	82 × 82 mm	1.8 kg	

Drawing on page 16.

Quick·Point® MT4 4-face Tombstone

NEW



The 4-face Tombstone can accept vices (jaw width 46 / 77) with a max. base length of 130 mm when mounted horizontally.

QUICK·POINT® MT4, 4-FACE TOMBSTONE

ITEM NO.	DIMENSIONS	MAX. QTY OF GRID PLATES	WEIGHT	PRICE
70264	192 × 192 × 260 mm	8 × 75600 or 4 × 45621	37.7 kg	

Included: 4 × Quick·Point® clamping studs Ø 20 mm

Suitable Quick·Point® Plate for both Tombstones:



QUICK·POINT® 52 2-FOLD GRID PLATE, 208 × 104 × 27 MM

ITEM NO.	DIMENSIONS	MOUNTING BORES	WEIGHT	PRICE
45621	208 × 104 × 27 mm	186 × 82 mm	4.0 kg	

Drawing on page 28.



30 Nm



Ø 16 mm



77



✓

Quick-Tower – The zero-point clamping system for horizontal machining centres

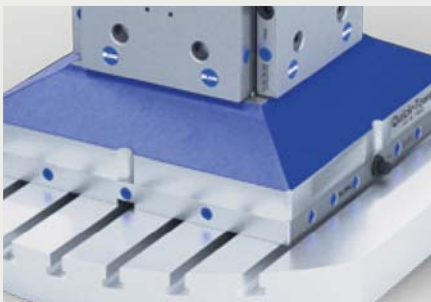


- 1 Stable and sturdy cast body with a plane parallelism of ± 0.02 mm
- 2 Up to 28 \times Quick-Point® Grid Plates 52 and 16 \times Quick-Point® Grid Plates 96 can be mounted depending on the size of the Quick-Tower
- 3 Continuous zero-point grid on all four faces
- 4 Included in delivery: Eye bolt for transport via crane
- 5 Equipped with 12 \times Quick-Point® clamping studs $\varnothing 20$ mm

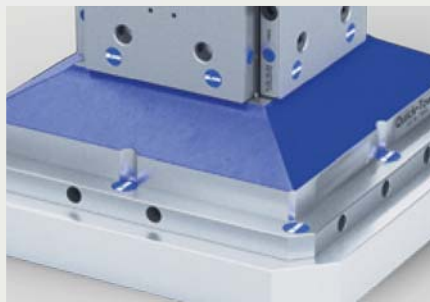


Mounting options

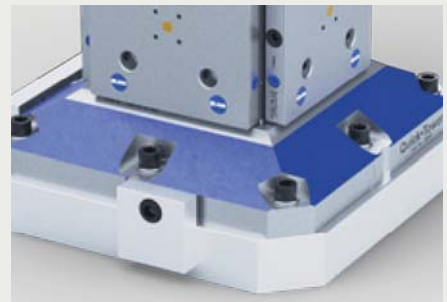
For mounting the Quick-Tower onto the machine tool table there are three options:



Mounted to the Quick-Point® system (e.g. 4-fold Grid Plate 96)

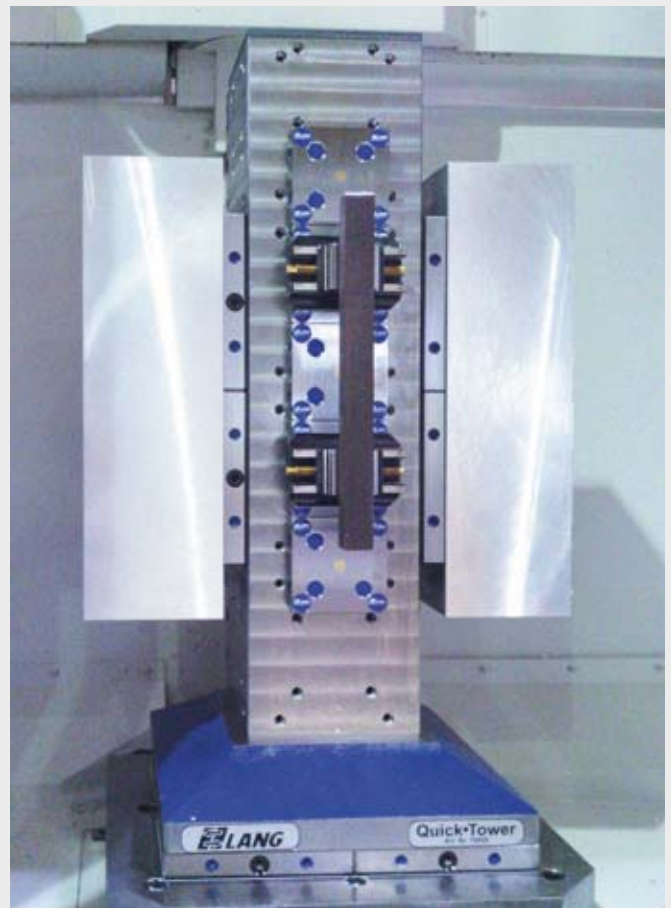


Mounted to the Quick-Tower Universal Base Plate (see page 47)



Mounted directly to the machine table with custom bores (price upon request!)

Applications



ZERO-POINT CLAMPING SYSTEM

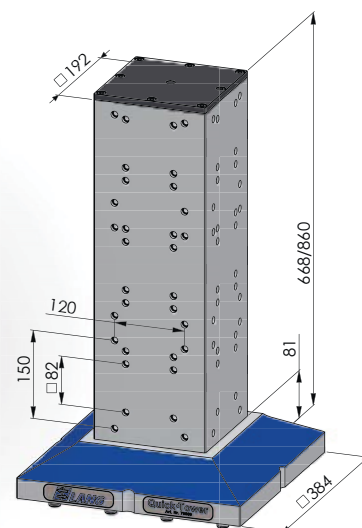
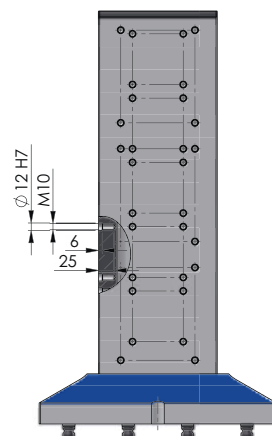
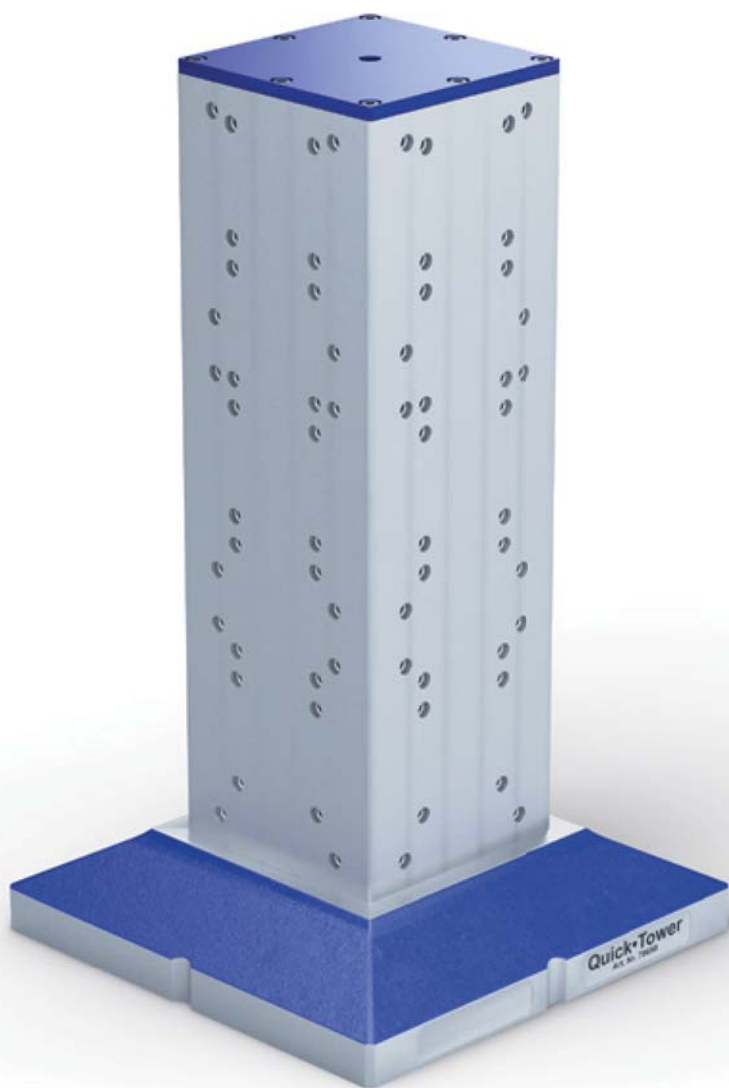
MAKRO-GRIP® STAMPING TECHNOLOGY

MAKRO-GRIP® 5-AXIS VICES

CONVENTIONAL WORKHOLDING

CLEANING FAN

Quick-Tower Base Body



Grid of 150 × 120 mm is designed to mount Quick-Point® plates 75710.

Grid of 82 × 82 mm is designed to mount Quick-Point® plates 75600.

QUICK-TOWER BASE BODY

ITEM NO.	BODY DIMENSIONS	BASE DIMENSIONS	TOTAL HEIGHT	WEIGHT	PRICE
70650	192 × 192 mm	384 × 384 mm	668 mm	160 kg	
70850	192 × 192 mm	384 × 384 mm	860 mm	200 kg	

If you prefer to fix the tombstone directly onto the machine tool table/pallet using its threads or slots just ask for an individual quotation.

Quick-Tower **Universal Base Plate**



**QUICK-TOWER UNIVERSAL BASE PLATE,
THROUGH BORE Ø 50H7, WITHOUT MOUNTING BORES**

ITEM NO.	DIMENSIONS	MOUNTING BORES	WEIGHT	PRICE
70005	396 × 396 × 27 mm	–	32.5 kg	
70006	Set mounting bores according to customer's request			

Drawing to be found on our website www.lang-technik.de



**QUICK-TOWER UNIVERSAL BASE PLATE,
THROUGH BORE Ø 50H7, WITH MOUNTING BORES**

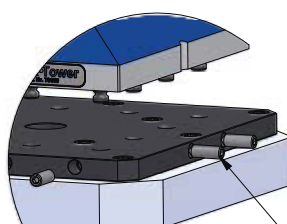
ITEM NO.	DIMENSIONS	MOUNTING BORES	WEIGHT	PRICE
70008	446 × 446 × 27 mm	12 × M16 at 200 mm distance	39.5 kg	

Drawing to be found on our website www.lang-technik.de

Utilisation and mounting:

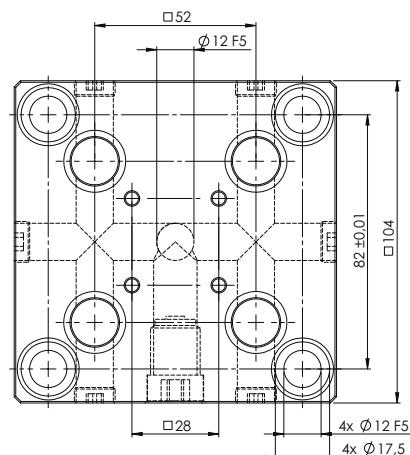
These sub-plates act as an interface between the machine table and the Quick-Tower. This allows the utilisation of one standard Quick-Tower in different machine tools and/or on different pallets.

The sub-plate can be aligned concentrically using the plate's Ø 50H7 through bore and the table's/pallet's centre bore accordingly. The axial alignment can be done by probing the outer faces or adding keyways for T-slot keys. The base plate is mounted to the table/pallet with DIN EN ISO 4762 cylinder screws. The fixation of the Quick-Tower is done with 12 × M16 threaded pins that are located in the four lateral faces of the base plate. These pins fix the Quick-Tower into position strongly with Quick-Point® clamping studs.

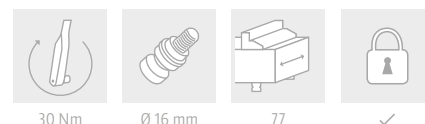


Threaded pin
12 × M16

Quick-Tower Grid Plates



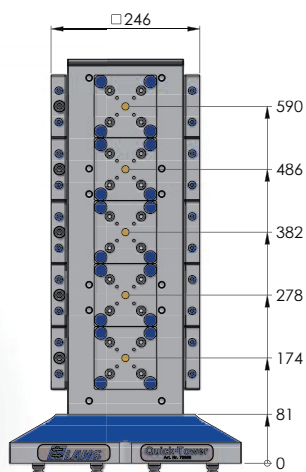
QUICK-TOWER 52, GRID PLATE 104 × 104 × 27 MM



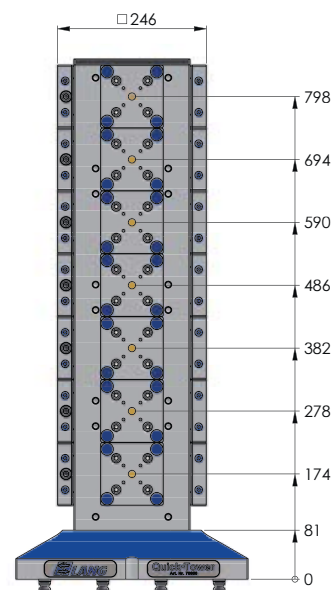
ITEM NO.	DIMENSIONS	MOUNTING BORES	WEIGHT	QUANTITY	PRICE*
75600	104 × 104 × 27 mm	82 × 82 mm	1.8 kg	1 - 10	
				11 - 25	
				26 - 49	
				from 50	

*Block pricing only applies for a purchase of a Quick-Tower.

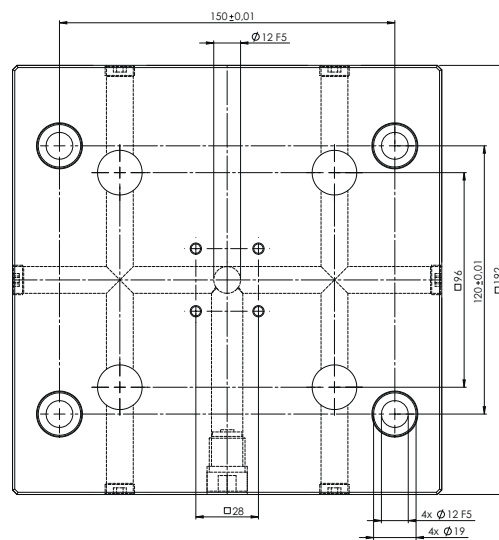
Included: 4 screws M 10 × 35, 2 bushings Ø 12 × 12 mm (Item No. 45000-09).



Tower 70650, height 668 mm,
max. 5 pallets on each face.

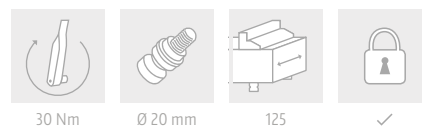


Tower 70850, height 860 mm,
max. 7 pallets on each face.



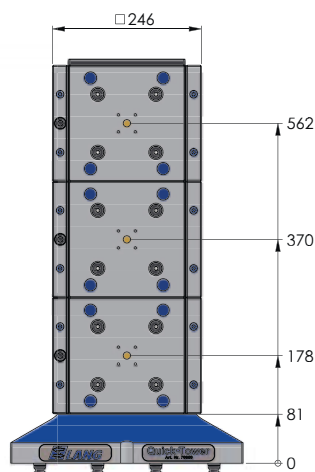
QUICK-TOWER 96, GRID PLATE

192 × 192 × 27 MM

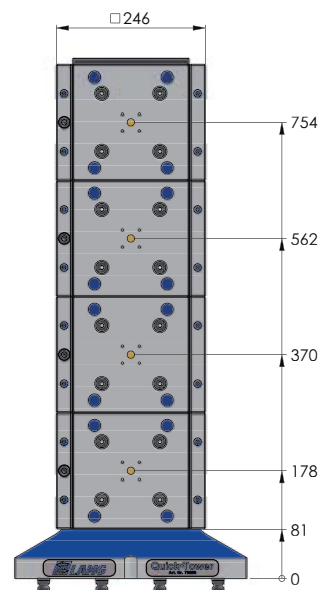


ITEM NO.	DIMENSIONS	MOUNTING BORES	WEIGHT	QUANTITY	PRICE*
75710	192 × 192 × 27 mm	150 × 120 mm	7.0 kg	1 – 6	
				7 – 11	
				12 – 29	
				from 30	

*Block pricing only applies for a purchase of a Quick-Tower.
Included: 4 screws M 10 × 35, 2 bushings Ø 12 × 12 mm (Item No. 45000-09).



Tower 70650, height 668 mm,
max. 3 pallets on each face.



Tower 70850, height 860 mm,
max. 4 pallets on each face.

Quick-Point® Clamping Studs

For individual adaptation of fixtures, workpieces or existing vices onto our Quick-Point® zero-point clamping system.

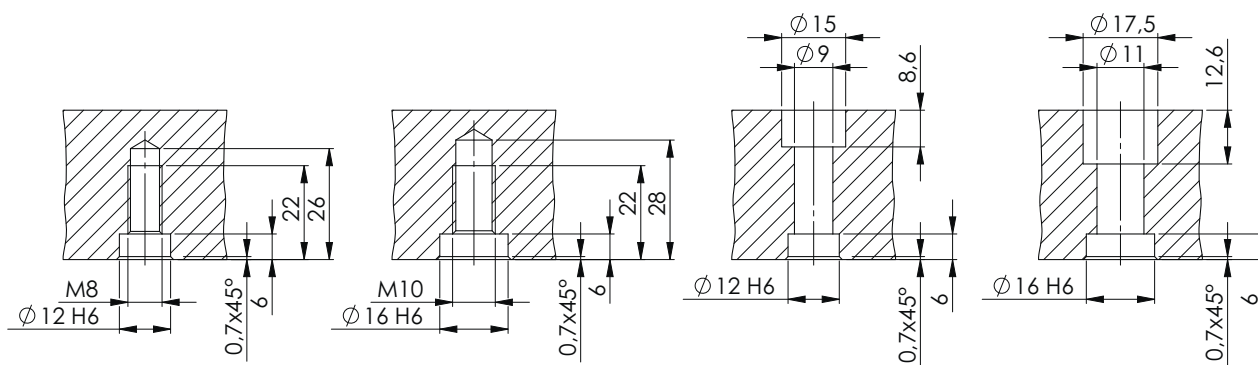


QUICK-POINT® CLAMPING STUDS FOR INDIVIDUAL ADAPTATION

ITEM NO.	DESCRIPTION	UNIT	PRICE
45270	Ø 16 mm for 52 mm spacing, incl. M 8 threaded pin	1 pc.	
45570	Ø 20 mm for 96 mm spacing, incl. M 10 threaded pin	1 pc.	

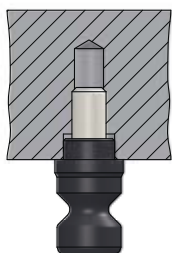
Please note: 4 Clamping Studs are required for one Quick-Point® plate!

How it works:

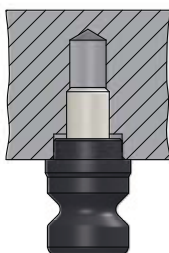


with threaded pins

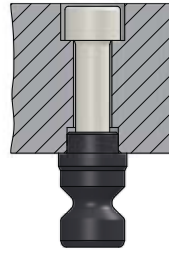
with screws



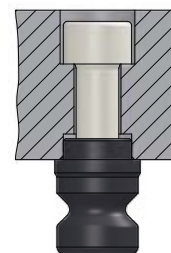
52



96

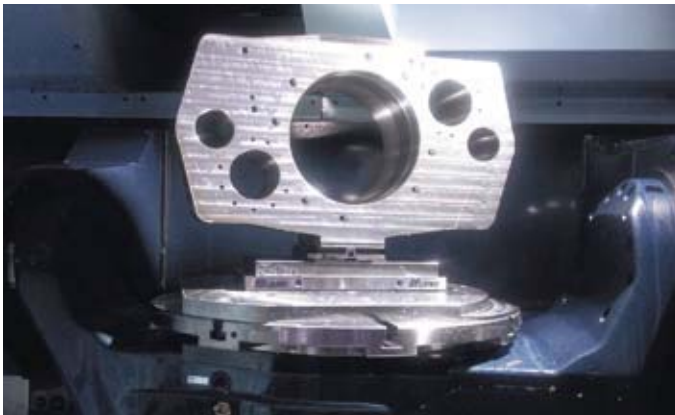


52



96

Applications:



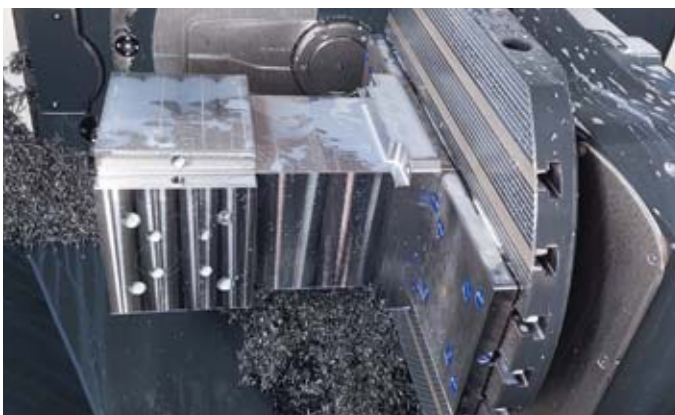
The studs need to be positioned in a 52 mm / 96 mm (± 0.01 mm) spacing for clamping workpieces straight onto the Quick-Point® plates.



The workpiece is clamped securely, without a vice, directly into the zero-point system.



Aluminium part (weight: 1.315 kg, dimensions: $1.067 \times 406 \times 1.016$ mm) clamped with 16 clamping studs.



Not only highly precise but also extremely rigid: Workpiece with 200 kg weight, 500 mm height. Clamped with just 4 studs in a single Quick-Point® plate.

Quick-Point® Support Plates

Support plates made of non-hardened steel – for individual adaptation of fixtures and other devices.



Lower interface:



52



✓

QUICK-POINT® 52, SUPPORT PLATES

ITEM NO.	DIMENSIONS	WEIGHT	PRICE
45275	96 × 96 × 27 mm	2.0 kg	
45277	156 × 156 × 27 mm	5.2 kg	

Included: 4 × Quick-Point® clamping studs Ø 16 mm



Lower interface:



96



✓

QUICK-POINT® 96, SUPPORT PLATES

ITEM NO.	DIMENSIONS	WEIGHT	PRICE
45575	156 × 156 × 27 mm	5.3 kg	
45577	192 × 192 × 27 mm	8.3 kg	

Included: 4 × Quick-Point® clamping studs Ø 20 mm

Quick-Point® Spacer Studs

Spacer studs allow for through holes in material which is clamped directly in the zero-point system. It also improves accessibility when machining edges and angles.



QUICK-POINT® SPACER STUDS

ITEM NO.	DIAMETER	SPACER HEIGHT	UNIT	PRICE
45270-10	Ø 16 mm for 52 mm spacing	10 mm (Ø 24 mm)	1 Set (4 pcs.)	
45570-10	Ø 20 mm for 96 mm spacing	10 mm (Ø 28 mm)	1 Set (4 pcs.)	

Applications



Quick-Point® Quick-Lock Fast Actuation System

Mechanical and quick fastener, compatible with all rectangular and squared Quick-Point® plates. Also compatible with the Quick-Point® 96, 2-fold Grid Plate, round. With the Quick-Lock, we provide a clamping lever and washers to adjust clamping force as needed.



QUICK-POINT® QUICK-LOCK 52

ITEM NO.	DESCRIPTION	FOR ITEM NO.	WEIGHT	PRICE
44552	Quick-Lock for Quick-Point® 52 Single-Plates, Twin Base 52, Adaptor Plate, 5-Axis Riser 52	45600 / 75600 / 45150 / 45151 / 47220 / 45160 / 45156 / 45157	0.3 kg	
45252	Quick-Lock for Quick-Point® 52, 2-fold Grid Plate	45621	0.8 kg	NEW
45452	Quick-Lock for Quick-Point® 52, 4-fold Grid Plate	45640 / 45641	0.9 kg	

QUICK-POINT® QUICK-LOCK 96

ITEM NO.	DESCRIPTION	FOR ITEM NO.	WEIGHT	PRICE
44596	Quick-Lock for Quick-Point® 96 Single-Plates, Twin Base 96, Adaptor Plate, 5-Axis Riser 96	45710 / 45763 / 45715 / 45716 / 45400 / 45401 / 47520 / 45406 / 45407	0.4 kg	
45296	Quick-Lock for Quick-Point® 96, 2-fold Grid Plate	45720	0.9 kg	
45996	Quick-Lock for Quick-Point® 96, 2-fold Grid Plates, round	45962 / 45963 / 45964	0.9 kg	NEW
45496	Quick-Lock for Quick-Point® 96, 4-fold Grid Plates	45740 / 45741 / 45742	1.0 kg	

Easy assembly in a few steps

Within just a few seconds the Quick-Lock fast actuation system is mounted to a Quick-Point® Plate. With a 180° motion of the lever the Quick-Lock clamps and releases the vice.



Removal of the Quick-Point® actuation screw:

Remove actuation screw and the two plastic covers and keep them safe. With multi fold plates you also have to remove the actuation bolt. During the whole installation process the Quick-Point® plate does not have to be removed from the machine table if already mounted.



Installation of the Quick-Lock fastener:

Insert the Quick-Lock pressure bolt into the actuation screw channel and tighten the two screws.

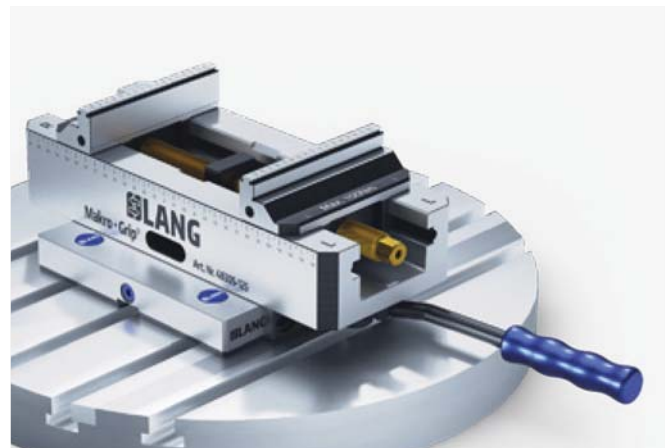
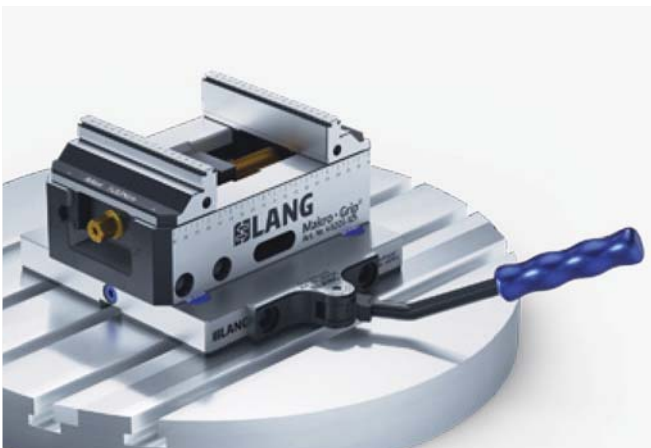


Checking the clamping forces:

Insert the clamping lever into the clamping element of the Quick-Lock fastener. Move the clamping lever in a 180° motion from right to left until you feel resistance. If the remaining angle is more/less than 70°, the clamping force needs to be adjusted by adding/removing washers. Detailed instructions and videos can be found on our website www.lang-technik.de.

Quick-Lock utilisation

The clamping lever equipped with a rotation lock can be used both horizontally and vertically. For vices and fixtures protruding from the Quick-Point® plate, the lever is used horizontally (right picture).



Quick-Point® Accessories



QUICK-POINT® COVER DISCS, PLASTIC

ITEM NO.	DIAMETER	UNIT	PRICE
45008-15	Ø 15 mm	1 set (20 pcs.)	
45008-20	Ø 20 mm	1 set (20 pcs.)	
45008-27	Ø 27 mm	1 set (20 pcs.)	

Heat-resistant, fibreglass reinforced cover discs for protecting the mounting screws against material pollution.



QUICK-POINT® COVER PLUGS, PLASTIC

ITEM NO.	DIAMETER	UNIT	PRICE
45052-20	Ø 16 mm for 52 mm spacing	1 set (4 pcs.)	
45096-20	Ø 20 mm for 96 mm spacing	1 set (4 pcs.)	

Cover plugs made of plastic for the protection of the stud holes when not in use. For multi fold plates steel plugs (see below) are necessary.



QUICK-POINT® COVER PLUGS, STEEL

ITEM NO.	DIAMETER	UNIT	PRICE
45052-30	Ø 16 mm for 52 mm spacing	1 set (4 pcs.)	
45096-30	Ø 20 mm for 96 mm spacing	1 set (4 pcs.)	

Cover plugs made of steel spread the increased clamping force of multi grid plates evenly and protect stud holes not in use. They can be removed from plates with the Cover Plug Remover.



QUICK-POINT® COVER PLUG REMOVER

ITEM NO.	DESCRIPTION	PRICE
45000-30	Cover Plug Remover	

Comfortable grip with magnet for removing steel plugs from the Quick-Point® plates.



QUICK-POINT® HANDLE BAR, ALUMINIUM

ITEM NO.	DESCRIPTION	PRICE
46081	Handle Bar	

This handle bar facilitates the handling of Quick-Point® devices when setting up and dismantling. As with usual LANG clamping devices, the handle bar is clamped with two Quick-Point® 96 clamping studs in the zero-point system and is thereby especially suited for the transportation of heavier Quick-Point® products.

Quick-Point® Alignment Accessories



SLOT KEYS, LOOSE, DIN 6323, FOR AXIAL ALIGNMENT OF QUICK-POINT® PLATES

ITEM NO.	SIZE	UNIT	PRICE
452014	20 to 14 mm	1 pc.	
452018	20 to 18 mm	1 pc.	

To make the assembly and alignment of the Quick-Point® plates as easy as possible, we offer slot keys for the plates' 20H7 keyways matching your table's t-slots (14 or 18 mm).

Attention: Keys not suitable for Item No. 45800 and 45890!

NEW



SLOT KEYS FOR AXIAL ALIGNMENT OF QUICK-POINT® ROUND PLATE, ITEM NO. 45890 (PAGE 25)

ITEM NO.	DIMENSIONS	UNIT	PRICE
452214	14 × 22 mm	1 pc.	
452218	18 × 22 mm	1 pc.	

For the alignment of Quick-Point® plate, Item No. 45890, which has 14 & 18 H7 grooves in the bottom, we offer these keys. Grooves in the plates are equipped with a M6 thread, suitable for screws DIN 84 or DIN 912, M6 × 16.

NEW



CENTRING STUDS FOR CONCENTRIC ALIGNMENT OF QUICK-POINT® PLATES

ITEM NO.	SIZE	UNIT	PRICE
451230	12 to 30 mm	1 pc.	
451232	12 to 32 mm	1 pc.	
451250	12 to 50 mm	1 pc.	
452530	25 to 30 mm	1 pc.	
452532	25 to 32 mm	1 pc.	
452550	25 to 50 mm	1 pc.	
455030	50 to 30 mm	1 pc.	
455032	50 to 32 mm	1 pc.	
455050	50 to 50 mm	1 pc.	

For the concentric alignment of Quick-Point® plates via fitting bores in the bottom (12, 25, 50 mm) we offer centring studs for the most common machine table holes (30, 32, 50 mm).

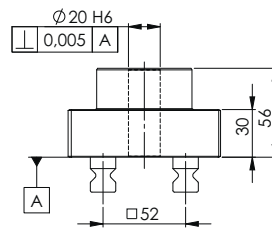
BUSHINGS FOR THE ALIGNMENT OF VICES AND ZERO-POINT PLATES

ITEM NO.	DIMENSIONS	FOR SCREW SIZE	UNIT	PRICE
45000-09	Ø 12 × 12 mm	M 10	1 pc.	
65191-04	Ø 12 × 12 mm	M 8	1 pc.	
65191-05	Ø 16 × 15 mm	M 10	1 pc.	

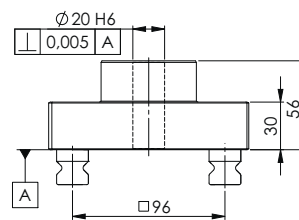
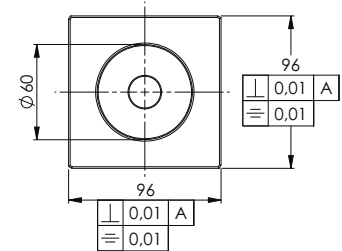
Item No. 45000-09 is suitable for aligning Quick-Point® plates on aluminum risers, Quick-Tower tombstones and other, select applications. Bushings 65191-04 and 65191-05 are used for the alignment and mounting of Makro-Grip® 5-Axis Vices on (old) LANG automation support pallets Item No. 65190 and 65197.

Quick-Point® Gauging Pallet

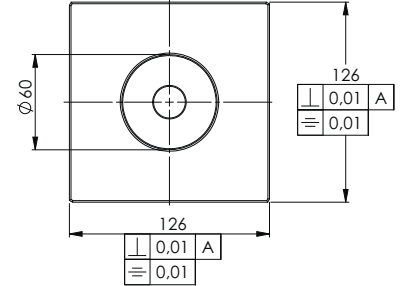
Jig-ground gauging pallet for a quick and precise alignment of Quick-Point® plates.
Recommended especially for rotary tables or chucks.



Quick-Point® Gauging Pallet 52



Quick-Point® Gauging Pallet 96



QUICK-POINT® GAUGING PALLET

ITEM NO.	FOR	DIMENSIONS	MEASURING LENGTH	WEIGHT	PRICE
44252	Quick-Point® 52	96 × 96 × 56 mm	95 mm per side	2.6 kg	
44296	Quick-Point® 96	126 × 126 × 56 mm	125 mm per side	4.2 kg	



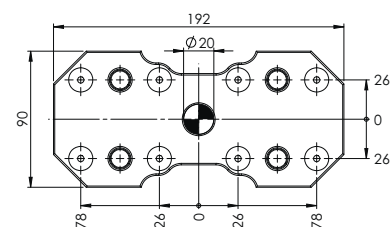
How it works:

After clamping the gauging pallet in a Quick-Point® plate, the axial alignment of the Quick-Point® plate is done by probing the jig-ground sides of the gauging pallet. For a concentric alignment the inner diameter of the gauging pallet can be used.

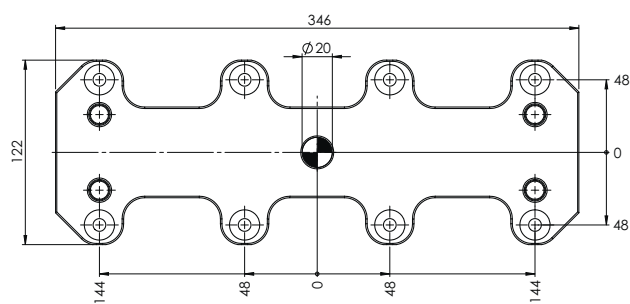
Watch the video for a complete instruction or download the manual from our website!

Quick-Point® Alignment Gauge

For easy and quick assembly of the Quick-Point® Grid Plates we recommend using the alignment gauge.
The precise alignment and dimensional accuracy of the plates is guaranteed.



Alignment Gauge 52



Alignment Gauge 96

ALIGNMENT GAUGE FOR QUICK-POINT® GRID PLATES

ITEM NO.	DESCRIPTION	WEIGHT	PRICE
44152	Alignment gauge 52	3.4 kg	
44196	Alignment gauge 96	6.5 kg	
44152-10	Alignment gauge 52 for rent	-	
44196-10	Alignment gauge 96 for rent	-	



How it works:

The Quick-Point® Alignment Gauge guarantees an accurate alignment of two or more Grid Plates positioned next to each other. This ensures that vices and fixtures can be clamped across two different plates. After the first plate is placed on the table, aligned with a probe and the screws fixed, the alignment gauge is applied on the neighboring plates and the outer accessible fixing screws can be tightened.

Watch the video for a complete instruction or download the manual from our website!

Quick-Point® Service

Set mounting bores

All of our Quick-Point® plates with prefabricated mounting bores are also available without such. The case-hardened zero-point plates (57 HRC, 0.7 mm deep) can be drilled according to the t-slots of the machine table. We offer this as a service.

The drawings of the Quick-Point® plates without mounting bores in this catalogue show hatched areas. These areas can be

used for mounting bores. On rare occasions mounting bores can even be set through rod channels. If this might be required for your application please ask your local LANG contact person.

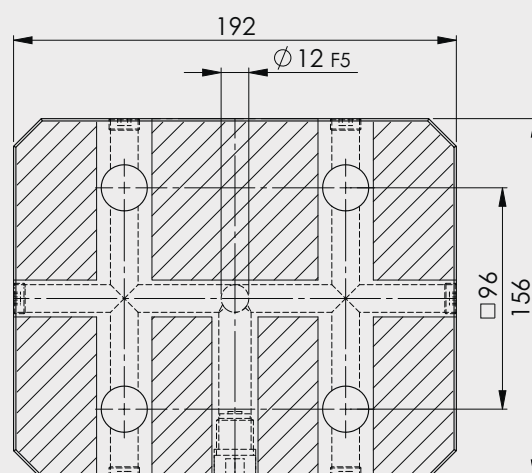
All drawings and models, as well as video that explain the Quick-Point® plates are mounted to the machine table are available on our website www.lang-technik.de



Quick-Point® plate with prefabricated mounting bores.



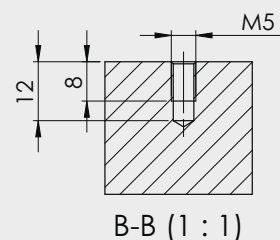
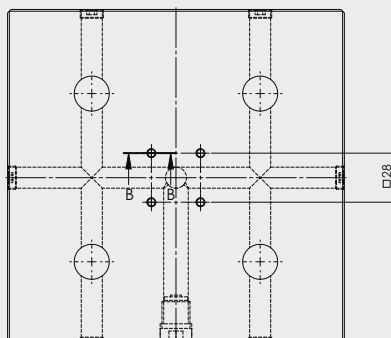
Same Quick-Point® plate without mounting bores. These can be installed by LANG or the customer.



M5 Index bores

Inserting a threaded pin or screw ensures that LANG clamping devices (with an equivalent recess on the bottom) are always positioned in the correct way on the zero-point plate.

By default index bores are included in following plates:
Item No. 45150, 45400, 75600, 75710, 47220 and 47520.

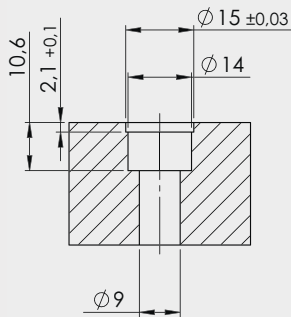


Covering mounting bores

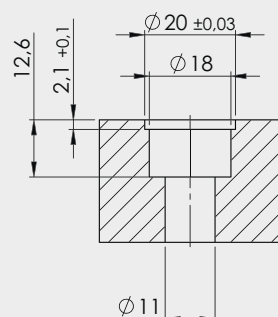


Quick-Point® plate with plastic cover discs.

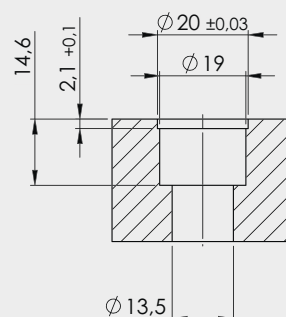
Mounting bores in Quick-Point® plates, either prefabricated or customised by LANG, have a 2.1 mm step. Plastic discs can be inserted and act as covers to prevent swarf or chips from clogging these bores. Plastic discs are available in three different diameters Ø 15 mm, Ø 20 mm and Ø 27 mm (see page 56).



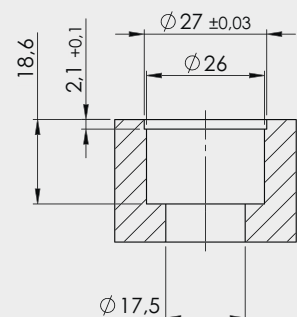
M8



M10



M12



M16

Custom corner radius for Quick-Point® grid / multi-fold plates

Upon request, we can adjust the zero-point system (multi grid or individual grid plates in a row) to round tables of the machine tool

by cutting off the corners. A clean solution that avoids in most cases a protrusion of the zero-point plates to the machine table.



CUSTOM CORNER RADIUS FOR QUICK-POINT® GRID / MULTI-FOLD PLATES

ITEM NO.	QUANTITY	PRICE
45043-01	Cut off 1 corner	
45043-02	Cut off 2 corners	
45043-04	Cut off 4 corners	