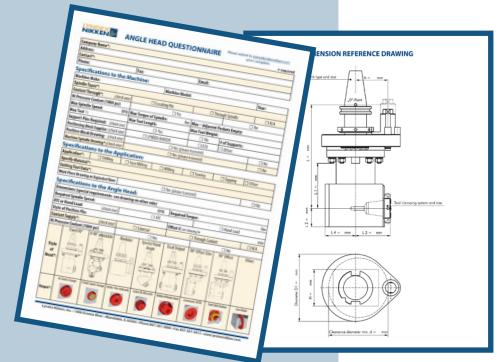




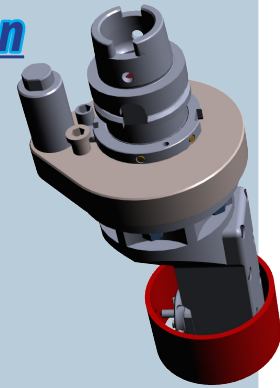
Selecting the best Angle Head

- Fill out our Angle Head Questionnaire
- Provide dimensional and material information about your part via 3D model and/or CAD drawing
- Additional information about the machine, current processes and cycle times are gathered



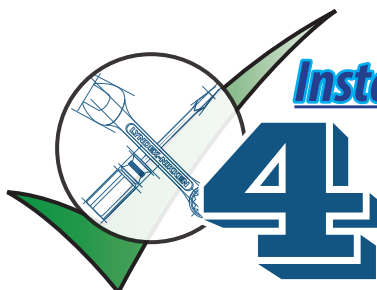
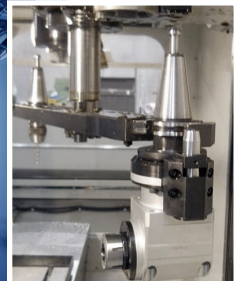
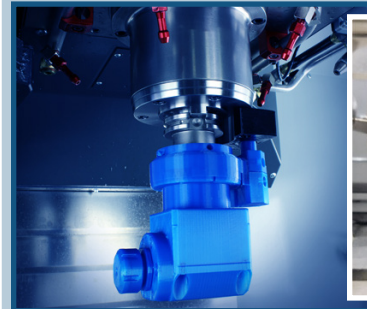
Verification of Clearance and Application

- 3D models of angle heads are used to verify internal motion in space critical locations
- Applications are qualified by determining torque calculations of the machining operation, and is verified again that the Angle Head can sustain the desired process



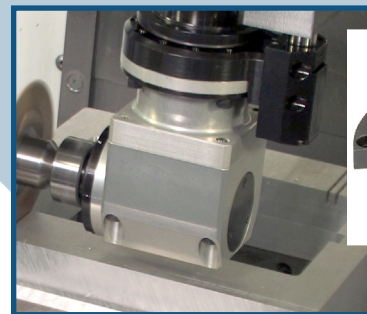
Automatic Tool Change & Weight Confirmation

- ATC and weight clearances are confirmed
- 3D printed Angle Heads and positioning blocks are available to ensure 100% dimensional accuracy and guarantees clearance while reducing cost and risk to the customer



Installation & Additional Support

- Additional support for positioning block design and integration of the unit are also available
- Positioning blocks are made to specifications, ensuring that the angle head is positioned and locked into place during final installation



**SPECIAL CUSTOM
POSITIONING BLOCK**

Why risk your investment?

We have you covered from design to installation!