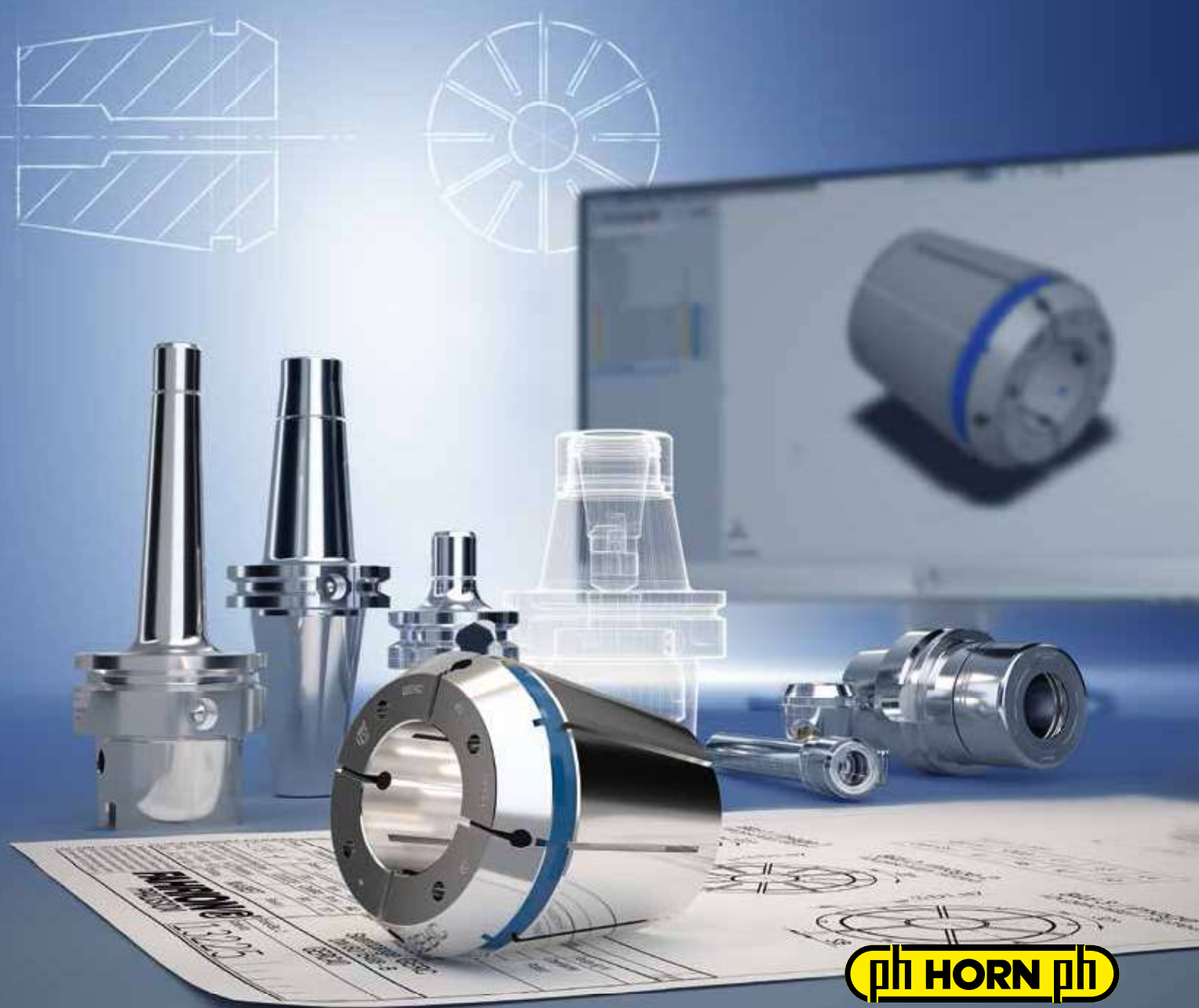


**FAHRION®**  
PRÄZISION



**CENTRO|P premium**  
CLAMPING SYSTEMS FROM FAHRION



**ph HORN ph**

## CENTRO|P premium

### Consistently One Step Ahead



**Welcome to the world of high-precision machining with customer benefits,  
where we are always looking to improve.**

As part of our CENTRO|P premium program, we offer you customised clamping systems, each with its own individual strengths and for a variety of applications.

Take advantage of other benefits, such as our FAHRION | Protect coating, tried and tested a million times, which is now also used on chucks and on clamping nuts. Pioneering technology that protects your complete tool clamping system and keeps it accurate and efficient for a long time.

## FPC, FULL PERFORMANCE CHUCKS

### Higher Damping and More Holding Power



The **FPC Full Performance Chucks** are always the first choice, if the UPC cannot be used due to danger of collision.

The FPC chucks offer more holding power than the DPC and are leaner than the UPC.



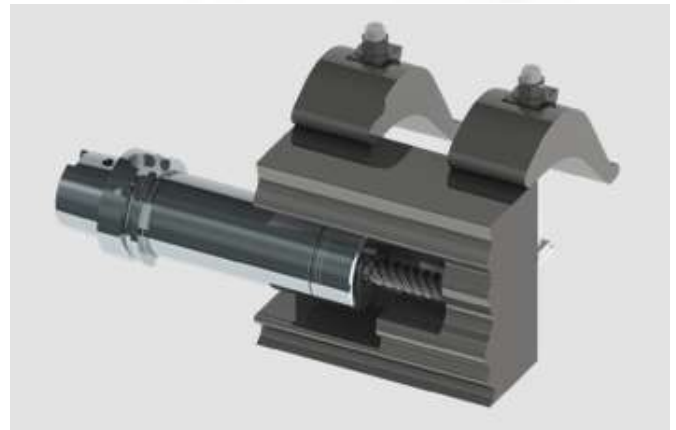
# FPC, FULL PERFORMANCE CHUCKS

## Features

FPC holders have a multi-part clamping nut for good damping properties and due to their length are particularly suitable for axial loads on stable machines with modern milling strategies, for components in the aerospace, medical, mould&die, high-end part, and contract manufacturing industries.



FPC chucks extend the range of application of the CENTRO|P chuck to heavy chipping with high axial forces. Different lengths ensure best access to the work piece, even over devices and other interference contours.



### The inner contour

Flexibility of projection is ensured by a large through diameter.

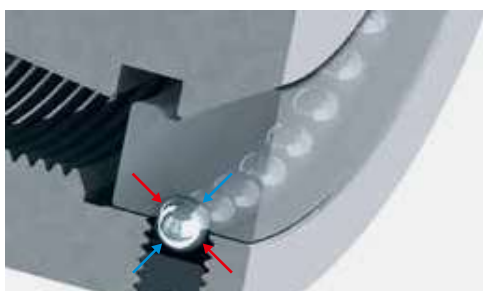


# FPC, FULL PERFORMANCE CHUCKS

## Full Performance thanks to Angular Contact Ball Bearings

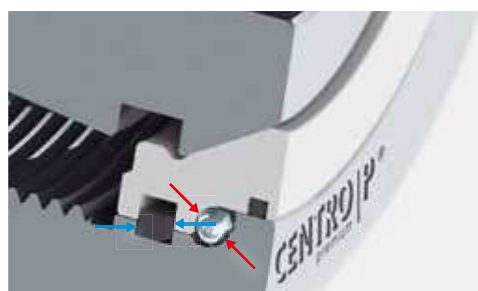
- New design of the clamping nut with an angular contact ball bearing and a compensating ring
- Proven trapezoidal thread with CENTRO|P typical double guide
- The ring allows clamping of the collet without radial forces. When tightening, the pressure on the collet is exerted only in the axial direction from top to bottom

- The multi-part nut increases the vibration damping.
- The tightening torques are identical to those of the PREMIUM DPC series
- As a result, the FPC clamping nut achieves a resulting clamping force between 350 Nm and 380 Nm, which is higher than with hydraulic chucks



### Conventional deep groove ball bearings:

Force flow during clamping (red) or release (blue) is transmitted exclusively via balls and bearing shells



### Angular contact ball bearings at FPC:

Power flow during clamping (red) is transmitted via the balls, when releasing (blue) via the circlip

### Coolant supply variants through the matching collet

One system, several variants. The choice of collet determines the type of coolant supply. For you this means:

- Better surface quality
- Longer tool life
- Easy chip removal
- Cooling and lubricating of the tool cutting edge



Without coolant supply  
GERC-HP  
GERC-B



Coolant through the centre  
GERC-HPD  
GERC-BD  
GERC-GBD



Peripheral cooling  
GERC-HPDD  
GERC-GBDD

### Process optimisation

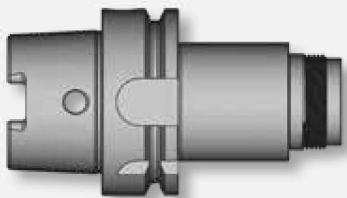
Optimise your process and inquire about our collets with customised jet holes. Starting at 0.2 mm outlet diameter, jet holes can be designed for specific applications, e.g. for cryo-gen or aerosol cooling.

NEW

# FPC, FULL PERFORMANCE CHUCKS

## Overview

### Interface:



- CAT40 / CAT50
- HSK-A 63
- HSK-A 100
- HSK-F 63
- SK 40
- SK 50
- BT 40 / BTP 40
- BT 50 / BTP 50
- PSC 63
- PSC 80
- CYL 32
- CYL 40

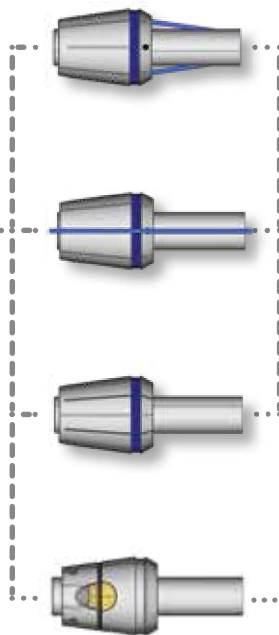
### Execution:

- Cylindrical

### Lengths:

- 60 mm to 75 mm
- 90 mm
- 100 mm / 105 mm
- 120 mm
- 130 mm / 135 mm
- 160 mm / 165 mm
- 200 mm

### Collets:



- GERC32-B / BD
- GERC32-HP / HPD / HPDD
- GERC32-W / WD
- GERC40-B / BD
- GERC40-HP / HPD / HPDD
- GERC40-W / WD

### Clamping nuts:

3  $\mu$ m at 3xD with HP collets and FPC clamping nut  
6  $\mu$ m at 3xD with B collets and FPC clamping nut

FPC



FPC



4  $\mu$ m at 3xD with W collets  
and FPC clamping nut

- FPC 32
- FPC 40