

WIDIA

WIDIA



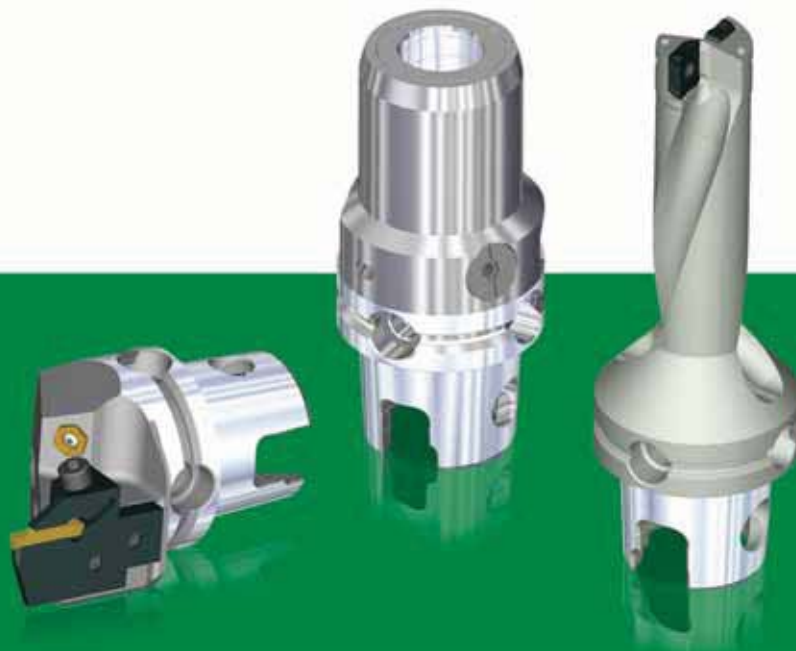
TOOLING SYSTEMS

TOOLING SYSTEMS

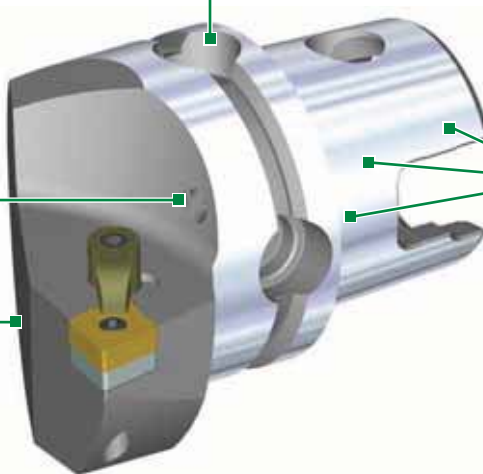
KM™ Quick Change Clamping System • **KM40TS™ Series**

The KM Quick Change Clamping System is the best system on the market suitable for static, rotating, and multitasking operations. With its industry-leading design, the KM Quick Change System provides greater clamping forces than other quick-change systems. The KM Quick Change System gives you the flexibility to use KM on any application within your shop.

KM40TS



- KM is an ISO standard (ISO 26622).
- KM clamping units provide a 4:1 mechanical advantage.
- KM cutting units are capable of 100 bar (1,500 psi) coolant pressure.



KM cutting units are equipped to use high-pressure coolant nozzles.

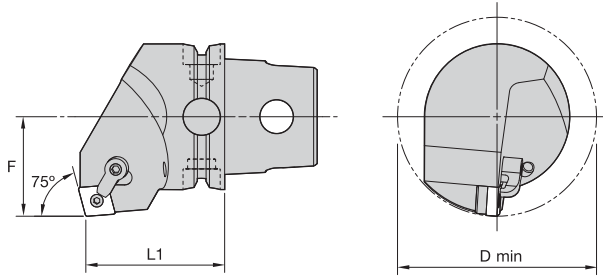
KM manufactured from high-strength tool steel.

The KM flange is designed to provide ATC capability and to enable use of an RFID chip.

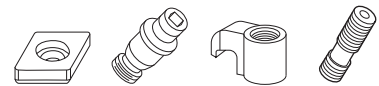
The KM System's superior rigidity is gained by the three points of contact the system develops when clamped.



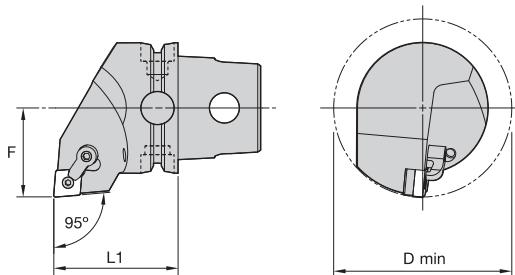
KM40TS Cutting Units



■ MCKN 75°



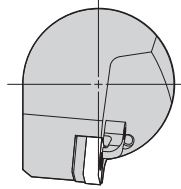
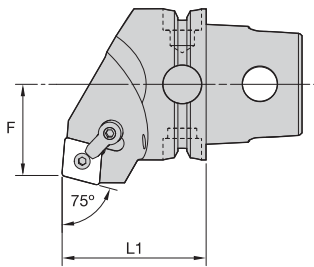
order number	catalog number	L1		F		D min		gage insert	shim	lock pin	clamp	clamp screw	kg	lbs
		mm	in	mm	in	mm	in							
	right hand													
3901336	KM40TSMCKNR12	40	1.575	27	1.063	54	2.126	CN..120408/CN..432	ICSN432	KLM46	CKM20LP	STCM11	0,36	.79
	left hand													
3901335	KM40TSMCKNL12	40	1.575	27	1.063	54	2.126	CN..120408/CN..432	ICSN432	KLM46	CKM20LP	STCM11	0,36	.79



■ MCLN 95°

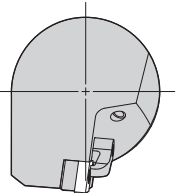
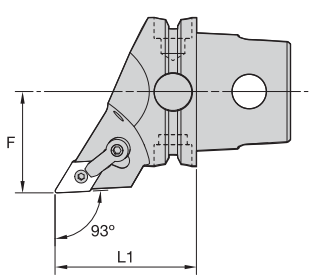
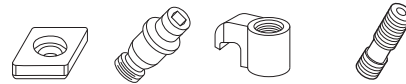


order number	catalog number	L1		F		D min		gage insert	shim	lock pin	clamp	clamp screw	kg	lbs
		mm	in	mm	in	mm	in							
	right hand													
2647737	KM40TSMCLNR12	40	1.575	27	1.063	54	2.126	CN..120408/CN..432	ICSN432	KLM46	CKM20LP	STCM11	0,33	.72
3901339	KM40TSMCLNR16	40	1.575	27	1.063	120	4.724	CN..160612/CN..543	ICSN533	KLM58	CKM20LP	STCM11	0,33	.73
	left hand													
3901337	KM40TSMCLNL12	40	1.575	27	1.063	54	2.126	CN..120408/CN..432	ICSN432	KLM46	CKM20LP	STCM11	0,33	.72
3901338	KM40TSMCLNL16	40	1.575	27	1.063	120	4.724	CN..160612/CN..543	ICSN533	KLM58	CKM20LP	STCM11	0,33	.73



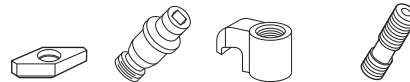
■ MCRN 75°

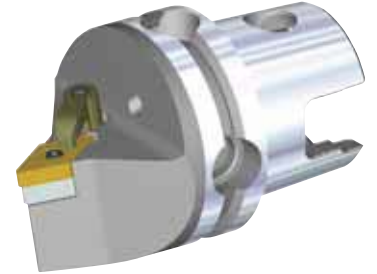
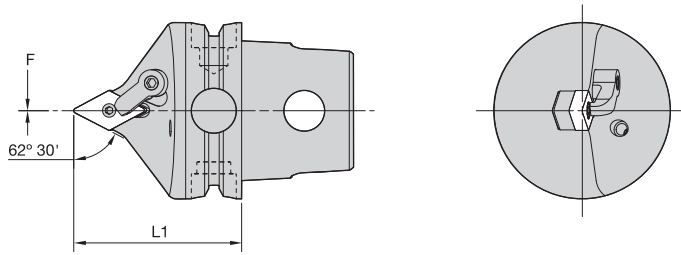
order number	catalog number	L1		F		gage insert	shim	lock pin	clamp	clamp screw	kg	lbs
		mm	in	mm	in							
	right hand											
3901341	KM40TSMCRNR12	40	1.575	24	.945	CN..120408/CN..432	ICSN432	KLM46	CKM20LP	STCM11	0,33	.72
	left hand											
3901340	KM40TSMCRNL12	40	1.575	24	.945	CN..120408/CN..432	ICSN432	KLM46	CKM20LP	STCM11	0,33	.72



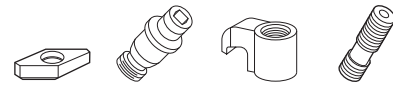
■ MDJN 93°

order number	catalog number	L1		F		gage insert	shim	lock pin	clamp	clamp screw	kg	lbs
		mm	in	mm	in							
	right hand											
3901291	KM40TSMDJNR1504	40	1.575	27	1.063	DN..150408/DN..432	IDSN442	KLM46L	CKM23LP	STCM11	0,26	.570
3901292	KM40TSMDJNR1506	40	1.575	27	1.063	DN..150608/DN..442	IDSN432	KLM46L	CKM23LP	STCM11	0,26	.570
	left hand											
3901289	KM40TSMDJNL1504	40	1.575	27	1.063	DN..150408/DN..432	IDSN442	KLM46L	CKM23LP	STCM11	0,26	.570
3901290	KM40TSMDJNL1506	40	1.575	27	1.063	DN..150608/DN..442	IDSN432	KLM46L	CKM23LP	STCM11	0,26	.570

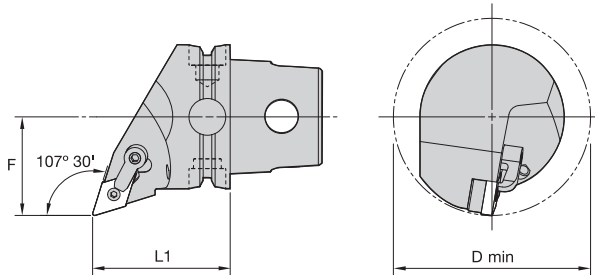




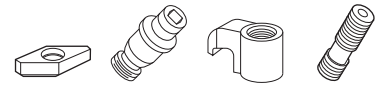
■ MDPN 62° 30'



order number	catalog number	L1		F		gage insert	shim	lock pin	clamp	clamp screw	kg	lbs
		mm	in	mm	in							
3901293	KM40TSM DPNN1504	40	1.575	0	.000	DN..150408/DN..432	IDSN442	KLM46L	CKM20LP	STCM11	0,23	.50
3901294	KM40TSM DPNN1506	40	1.575	0	.000	DN..150608/DN..442	IDSN432	KLM46L	CKM20LP	STCM11	0,22	.49



■ MDQN 107° 30'



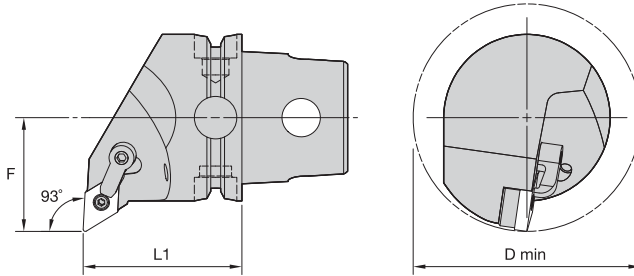
order number	catalog number	L1		F		D min	gage insert	shim	lock pin	clamp	clamp screw	kg	lbs
		mm	in	mm	in								
3901297	KM40TSM DQNR1504 right hand	40	1.575	27	1.063	54 2.126	DN..150408/DN..432	IDSN442	KLM46L	CKM23LP	STCM11	0,29	.63
3901298	KM40TSM DQNR1506 left hand	40	1.575	27	1.063	54 2.126	DN..150608/DN..442	IDSN432	KLM46L	CKM23LP	STCM11	0,28	.62
3901295	KM40TSM DQNL1504	40	1.575	27	1.063	54 2.126	DN..150408/DN..432	IDSN442	KLM46L	CKM23LP	STCM11	0,28	.63
3901296	KM40TSM DQNL1506	40	1.575	27	1.063	54 2.126	DN..150608/DN..442	IDSN432	KLM46L	CKM23LP	STCM11	0,28	.62

KM40TS™ Cutting Units

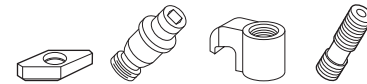
M-Clamping



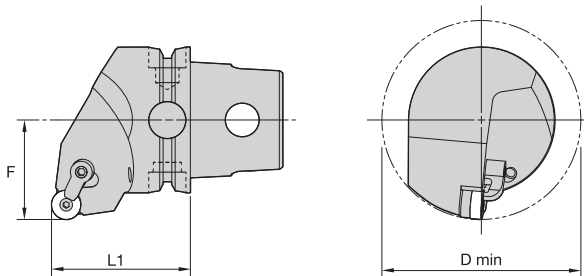
KM40TS Cutting Units



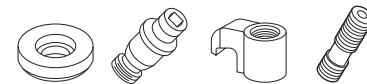
MDUN 93°



order number	catalog number	L1		F		D min		gage insert	shim	lock pin	clamp	clamp screw	kg	lbs
		mm	in	mm	in	mm	in							
right hand														
3901301	KM40TSM DUNR1504	40	1.575	27	1.063	54	2.126	DN..150408/DN..432	IDSN442	KLM46L	CKM23LP	STCM11	0,31	.69
3901302	KM40TSM DUNR1506	40	1.575	27	1.063	54	2.126	DN..150608/DN..442	IDSN432	KLM46L	CKM23LP	STCM11	0,31	.68
left hand														
3901299	KM40TSM DUNL1504	40	1.575	27	1.063	54	2.126	DN..150408/DN..432	IDSN442	KLM46L	CKM23LP	STCM11	0,31	.69
3901300	KM40TSM DUNL1506	40	1.575	27	1.063	54	2.126	DN..150608/DN..442	IDSN432	KLM46L	CKM23LP	STCM11	0,31	.68



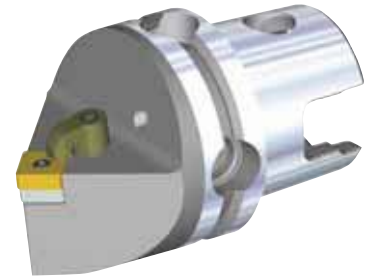
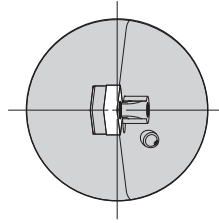
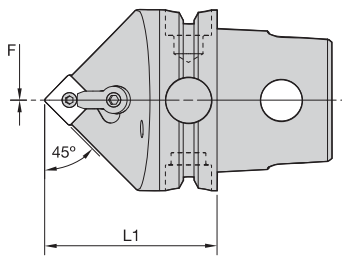
MRGN 0°



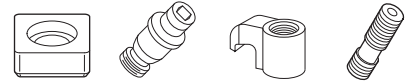
order number	catalog number	L1		F		D min		gage insert	shim	lock pin	clamp	clamp screw	kg	lbs
		mm	in	mm	in	mm	in							
right hand														
3901306	KM40TSM RGNR12	40	1.575	27	1.063	100	3.937	RN..120400/RN..43	IRSN43	KLM46	CKM20LP	STCM11	0,32	.71
left hand														
3901305	KM40TSM RGNL12	40	1.575	27	1.063	100	3.937	RN..120400/RN..43	IRSN43	KLM46	CKM20LP	STCM11	0,32	.71



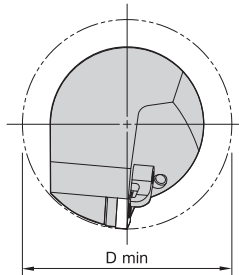
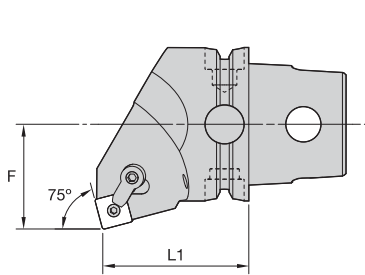
KM40TS Cutting Units



■ MSDN 45°



order number	catalog number	L1		F		gage insert	shim	lock pin	clamp	clamp screw	kg	lbs
		mm	in	mm	in							
3901307	KM40TSMDSNN12	40	1.575	0	.000	SN..120408/SN..432	ISSN432	KLM46	CKM20LP	STCM11	0,26	.57



■ MSKN 75°



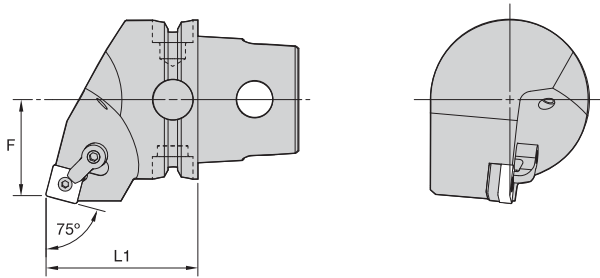
order number	catalog number	L1		F		D min		gage insert	shim	lock pin	clamp	clamp screw	kg	lbs
		mm	in	mm	in	mm	in							
3901309	right hand	40	1.575	27	1.063	54	2.126	SN..120408/SN..432	ISSN432	KLM46	CKM20LP	STCM11	0,36	.80
	KM40TSMskNR12													
3901308	left hand	40	1.575	27	1.063	54	2.126	SN..120408/SN..432	ISSN432	KLM46	CKM20LP	STCM11	0,36	.80

KM40TS™ Cutting Units

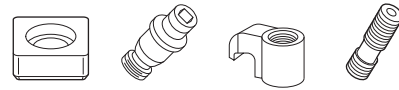
M-Clamping



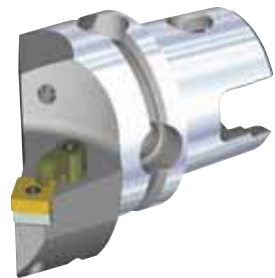
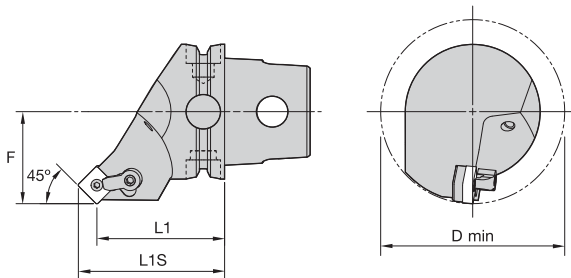
KM40TS Cutting Units



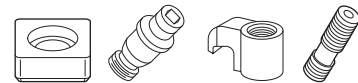
■ MSRN 75°



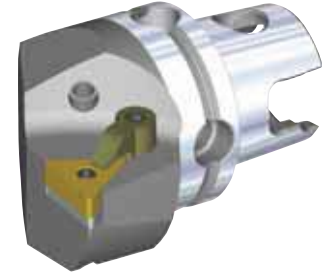
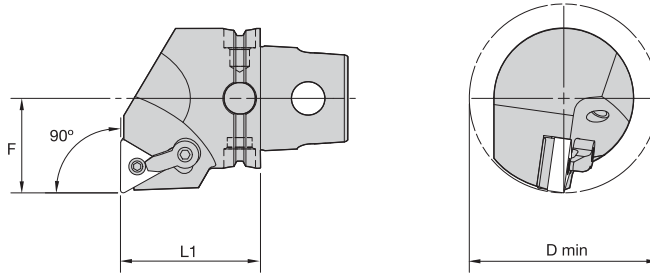
order number	catalog number	L1		F		gage insert	shim	lock pin	clamp	clamp screw	kg	lbs
		mm	in	mm	in							
right hand												
3901311	KM40TSMRNR12	40	1.575	24	.945	SN..120408/SN..432	ISSN432	KLM46	CKM20LP	STCM11	0,31	.67
3901312	KM40TSMRNR15	40	1.575	24	.945	SN..150612/SN..543	ISSN533	KLM58	CKM20LP	STCM11	0,33	.73
left hand												
3901310	KM40TSMRNL12	40	1.575	24	.945	SN..120408/SN..432	ISSN432	KLM46	CKM20LP	STCM11	0,31	.68



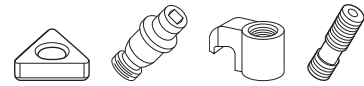
■ MSSN 45°



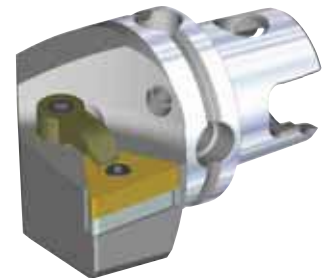
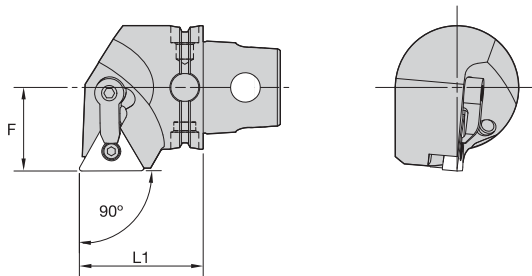
order number	catalog number	L1		L1S		F		D min		gage insert	shim	lock pin	clamp	clamp screw	kg	lbs
		mm	in	mm	in	mm	in	mm	in							
right hand																
3901314	KM40TSMSSNR12	40	1.575	48,3	1.903	27	1.063	80	3.150	SN..120408/SN..432	ISSN432	KLM46	CKM20LP	STCM11	0,32	.72
left hand																
3901313	KM40TSMSSNL12	40	1.575	48,3	1.903	27	1.063	80	3.150	SN..120408/SN..432	ISSN432	KLM46	CKM20LP	STCM11	0,32	.71



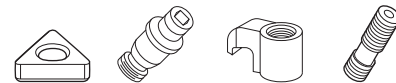
■ MTFN 90°



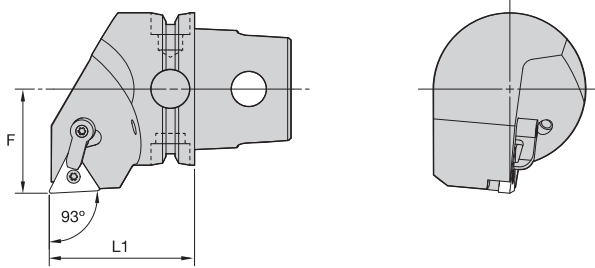
order number	catalog number	L1		F		D min		gage insert	shim	lock pin	clamp	clamp screw	kg	lbs	
		mm	in	mm	in	mm	in								
		right hand													
3902249	KM40TSMTFNR16	40	1.575	27	1.063	54	2.126	TN..160408/TN..332	ITSN322	KLM34L	CKM7LP	STCM9	0,35	.78	
		left hand													
3902247	KM40TSMTFNL16	40	1.575	27	1.063	54	2.126	TN..160408/TN..332	ITSN322	KLM34L	CKM7LP	STCM9	0,35	.78	



■ MTGN 90°

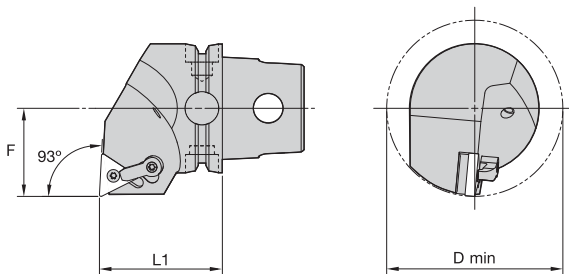
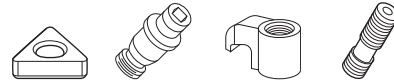


order number	catalog number	L1		F		gage insert	shim	lock pin	clamp	clamp screw	kg	lbs	
		mm	in	mm	in								
		right hand											
3902251	KM40TSMTGNR22	40	1.575	27	1.063	TN..220408/TN..432	ITSN433	KLM46	CKM23LP	STCM11	0,35	.78	
		left hand											
3902250	KM40TSMTGNL22	40	1.575	27	1.063	TN..220408/TN..432	ITSN433	KLM46	CKM23LP	STCM11	0,35	.78	



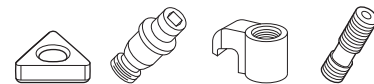
■ MTJN 93°

order number	catalog number	L1		F		gage insert	shim	lock pin	clamp	clamp screw	kg	lbs
		mm	in	mm	in							
right hand												
3902274	KM40TSMTJNR16	40	1.575	27	1.063	TN..160408/TN..332	ITSN322	KLM34L	CKM7LP	STCM9	0,33	.73
3902275	KM40TSMTJNR22	40	1.575	27	1.063	TN..220408/TN..432	ITSN433	KLM46	CKM23LP	STCM11	0,36	.79
left hand												
3902252	KM40TSMTJNL16	40	1.575	27	1.063	TN..160408/TN..332	ITSN322	KLM34L	CKM7LP	STCM9	0,33	.73
3902273	KM40TSMTJNL22	40	1.575	27	1.063	TN..220408/TN..432	ITSN433	KLM46	CKM23LP	STCM11	0,36	.79



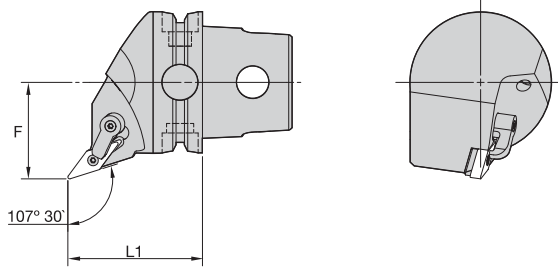
■ MTUN 93°

order number	catalog number	L1		F		D min		gage insert	shim	lock pin	clamp	clamp screw	kg	lbs
		mm	in	mm	in	mm	in							
right hand														
3902278	KM40TSMTUNR16	40	1.575	27	1.063	54	2.126	TN..160408/TN..332	ITSN322	KLM34L	CKM7LP	STCM9	0,34	.76
left hand														
3902276	KM40TSMTUNL16	40	1.575	27	1.063	54	2.126	TN..160408/TN..332	ITSN322	KLM34L	CKM7LP	STCM9	0,34	.76
3902277	KM40TSMTUNL22	40	1.575	27	1.063	54	2.126	TN..220408/TN..432	ITSN433	KLM46	CKM20LP	STCM11	0,34	.75

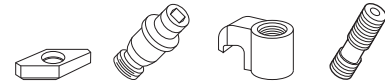




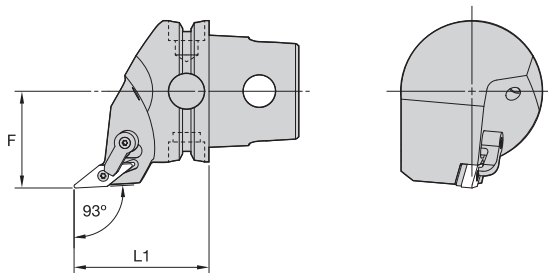
KM40TS Cutting Units



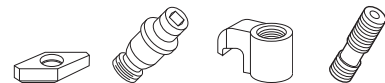
■ MVHN 107° 30'



order number	catalog number	L1		F		gage insert	shim	lock pin	clamp	clamp screw	kg lbs	
		mm	in	mm	in						kg	lbs
	right hand											
3902239	KM40TSMVHNR16050M	50	1.969	27	1.063	VN..160408/VN..332	IVSN322	KLM34L	CKM23LP	STCM11	0,35	.77
	left hand											
3902238	KM40TSMVHNL16050M	50	1.969	27	1.063	VN..160408/VN..332	IVSN322	KLM34L	CKM23LP	STCM11	0,35	.77



■ MVJN 93°



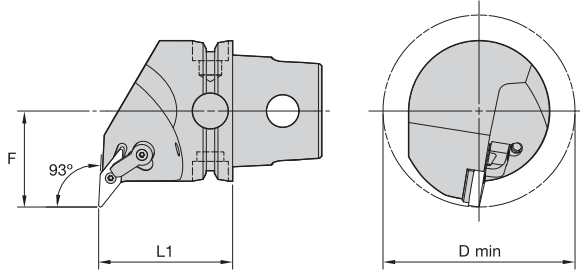
order number	catalog number	L1		F		gage insert	shim	lock pin	clamp	clamp screw	kg lbs	
		mm	in	mm	in						kg	lbs
	right hand											
3902241	KM40TSMVJNR16045M	45	1.772	27	1.063	VN..160408/VN..332	IVSN322	KLM34L	CKM20LP	STCM11	0,30	.65
	left hand											
3902240	KM40TSMVJNL16045M	45	1.772	27	1.063	VN..160408/VN..332	IVSN322	KLM34L	CKM20LP	STCM11	0,30	.65

KM40TS™ Cutting Units

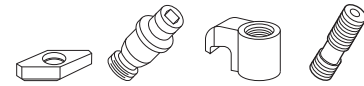
M-Clamping



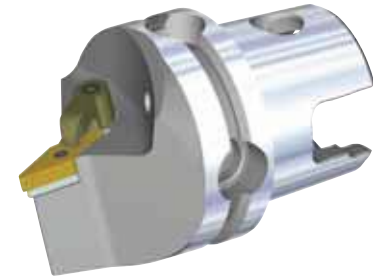
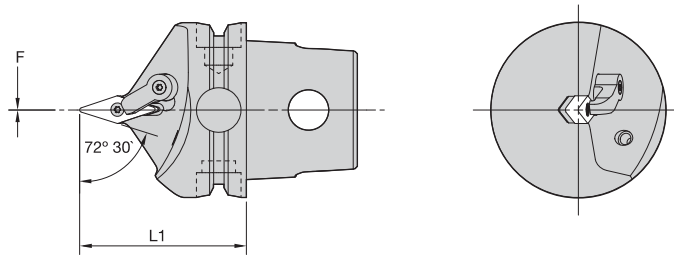
KM40TS Cutting Units



■ MVUN 93°



order number	catalog number	L1		F		D min		gage insert	shim	lock pin	clamp	clamp screw	kg	lbs	
		mm	in	mm	in	mm	in								
		right hand													
3902253	KM40TSMVUNR16045M	45	1.772	27	1.063	54	2.126	VN..160408/VN..332	IVSN322	KLM34L	CKM23LP	STCM11	0,36	.79	
		left hand													
3902242	KM40TSMVUNL16045M	45	1.772	27	1.063	54	2.126	VN..160408/VN..332	IVSN322	KLM34L	CKM23LP	STCM11	0,36	.79	



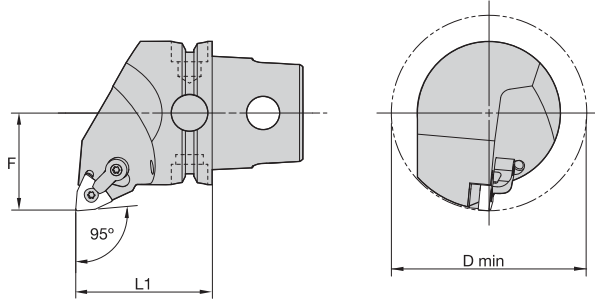
■ MVVN 72° 30'



order number	catalog number	L1		F		gage insert	shim	lock pin	clamp	clamp screw	kg	lbs
		mm	in	mm	in							
3902254	KM40TSMVVNN16050M	50	1.969	0	.000	VN..160408/VN..332	IVSN322	KLM34L	CKM20LP	STCM11	0,29	.64



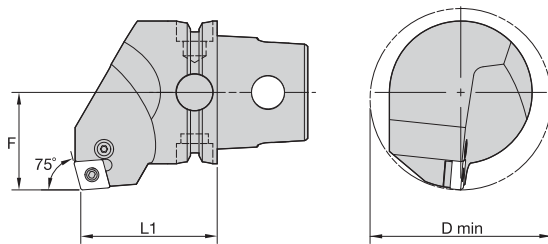
KM40TS Cutting Units



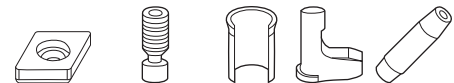
■ MWLN 95°



order number	catalog number	L1		F		D min		gage insert	shim	lock pin	clamp	clamp screw	kg lbs		
		mm	in	mm	in	mm	in								
		right hand													
3902256	KM40TSMWLNRO8	40	1.575	27	1.063	54	2.126	WN..080408/WN..432	IWSN433	KLM46	CKM20LP	STCM11	0,34	.76	
		left hand													
3902255	KM40TSMWLNLO8	40	1.575	27	1.063	54	2.126	WN..080408/WN..432	IWSN433	KLM46	CKM20LP	STCM11	0,34	.76	



■ PCKN 75°



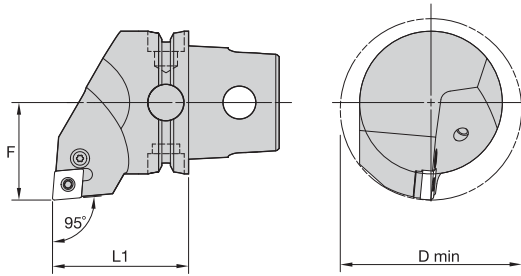
order number	catalog number	L1		F		D min		gage insert	shim	lever screw	shim pin	toggle lever	punch	kg lbs	
		mm	in	mm	in	mm	in								
		right hand													
3902261	KM40TSPCKNR12	40	1.575	27	1.063	50	1.969	CN..120408/CN..432	512.112	514.123	513.023	511.023	515.018	0,36	.78
		left hand													
3902260	KM40TSPCKNL12	40	1.575	27	1.063	50	1.969	CN..120408/CN..432	512.112	514.123	513.023	511.023	515.018	0,35	.77

KM40TS™ Cutting Units

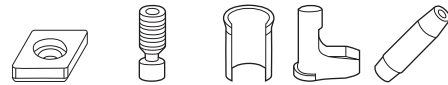
P-Clamping



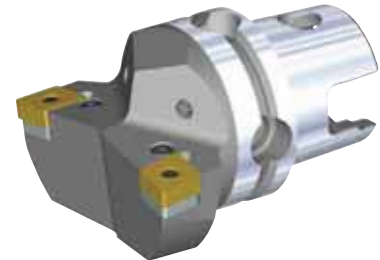
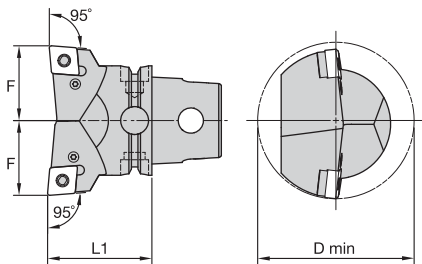
KM40TS Cutting Units



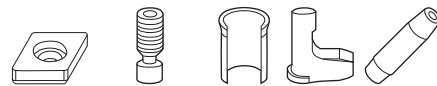
■ PCLN 95°



order number	catalog number	L1		F		D min		gage insert	shim	lever screw	shim pin	toggle lever	punch	kg lbs	
		mm	in	mm	in	mm	in								
		right hand													
3902315	KM40TSPCLNR09	40	1.575	27	1.063	50	1.969	CN..090308/CN..322	512.111	514.118	513.019	511.018	515.018	0,32 .71	
3902316	KM40TSPCLNR12	40	1.575	27	1.063	50	1.969	CN..120408/CN..432	512.112	514.123	513.023	511.023	515.018	0,32 .70	
		left hand													
3902262	KM40TSPCLNL09	40	1.575	27	1.063	50	1.969	CN..090308/CN..322	512.111	514.118	513.019	511.018	515.018	0,33 .72	
3902313	KM40TSPCLNL12	40	1.575	27	1.063	50	1.969	CN..120408/CN..432	512.112	514.123	513.023	511.023	515.018	0,32 .71	



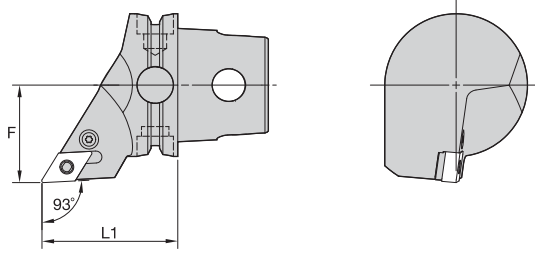
■ PCLN-2W 95°



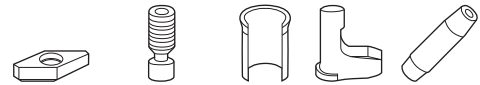
order number	catalog number	L1		F		D min		gage insert	shim	lever screw	shim pin	toggle lever	punch	kg lbs	
		mm	in	mm	in	mm	in								
		right hand													
3902317	KM40TSPCLNR122W	40	1.575	27	1.063	60	2.362	CN..120408/CN..432	512.112	514.123	513.023	511.023	515.018	0,35 .77	
		left hand													
3902314	KM40TSPCLNL122W	40	1.575	27	1.063	60	2.362	CN..120408/CN..432	512.112	514.123	513.023	511.023	515.018	0,35 .77	



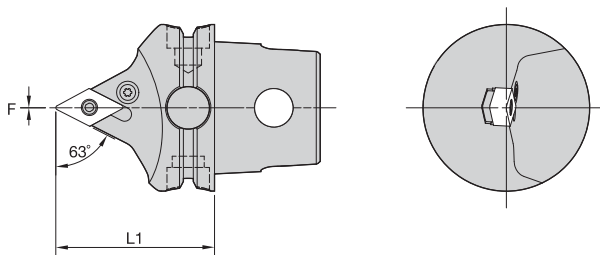
KM40TS Cutting Units



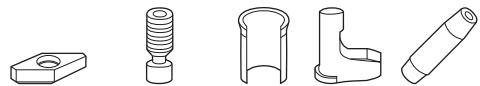
■ PDJN 93°



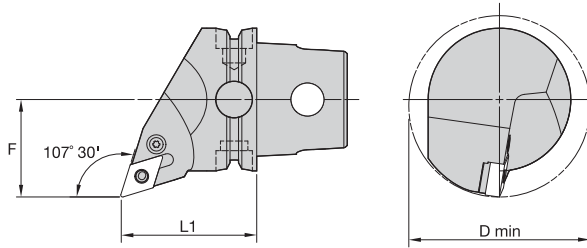
order number	catalog number	L1		F		gage insert	shim	lever screw	shim pin	toggle lever	punch	kg	lbs
		mm	in	mm	in								
right hand													
3902312	KM40TSPDJNR11	40	1.575	27	1.063	DN..110408/DN..332	512.060	514.118	513.060	511.060	515.018	0,26	.56
3902323	KM40TSPDJNR15	40	1.575	27	1.063	DN..150608/DN..442	512.153	514.128	513.023	511.024	515.018	0,26	.56
left hand													
3902310	KM40TSPDJNL11	40	1.575	27	1.063	DN..110408/DN..332	512.060	514.118	513.060	511.060	515.018	0,25	.56
3902311	KM40TSPDJNL15	40	1.575	27	1.063	DN..150608/DN..442	512.153	514.128	513.023	511.024	515.018	0,26	.56



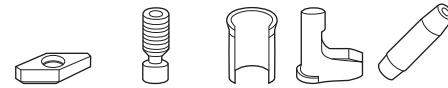
■ PDNN 63°



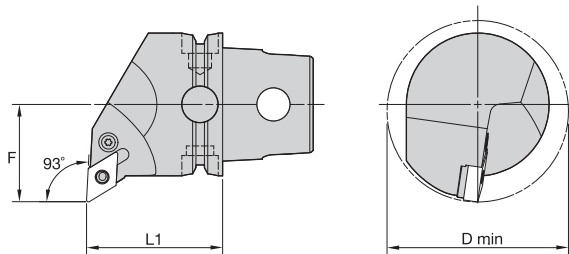
order number	catalog number	L1		F		gage insert	shim	lever screw	shim pin	toggle lever	punch	kg	lbs
		mm	in	mm	in								
right hand													
3902325	KM40TSPDNNR15	45	1.772	0	.000	DN..150608/DN..442	512.153	514.128	513.023	511.024	515.018	0,24	.52
left hand													
3902324	KM40TSPDNNL15	45	1.772	0	.000	DN..150608/DN..442	512.153	514.128	513.023	511.024	515.018	0,24	.52



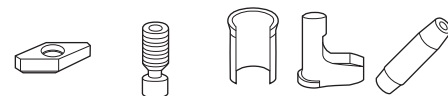
■ PDQN 107° 30'



order number	catalog number	L1		F		D min		gage insert	shim	lever screw	shim pin	toggle lever	punch	kg	lbs
		mm	in	mm	in	mm	in								
right hand															
3902327	KM40TSPDQNR11	40	1.575	27	1.063	50	1.969	DN..110408/DN..332	512.060	514.118	513.060	511.060	515.018	0,29	.63
left hand															
3902326	KM40TSPDQNL11	40	1.575	27	1.063	50	1.969	DN..110408/DN..332	512.060	514.118	513.060	511.060	515.018	0,29	.63



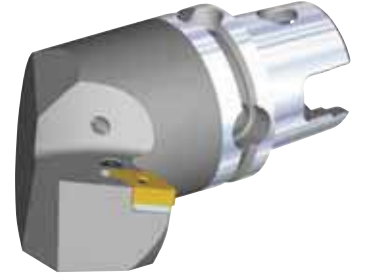
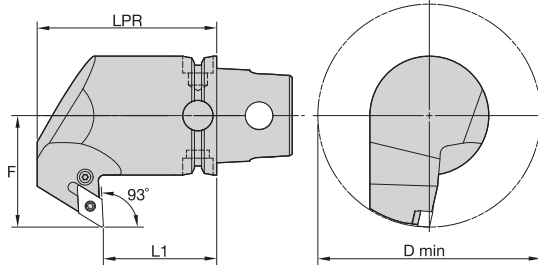
■ PDUN 93°



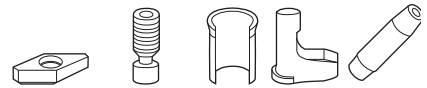
order number	catalog number	L1		F		D min		gage insert	shim	lever screw	shim pin	toggle lever	punch	kg	lbs
		mm	in	mm	in	mm	in								
right hand															
3902330	KM40TSPDUNR11	40	1.575	27	1.063	50	1.969	DN..110408/DN..332	512.060	514.118	513.060	511.060	515.018	0,33	.72
3902331	KM40TSPDUNR15	40	1.575	27	1.063	50	1.969	DN..150608/DN..442	512.153	514.128	513.023	511.024	515.018	0,32	.71
left hand															
3902328	KM40TSPDUNL11	40	1.575	27	1.063	50	1.969	DN..110408/DN..332	512.060	514.118	513.060	511.060	515.018	0,31	.68
3902329	KM40TSPDUNL15	40	1.575	27	1.063	50	1.969	DN..150608/DN..442	512.153	514.128	513.023	511.024	515.018	0,32	.71



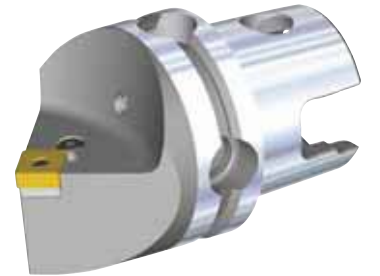
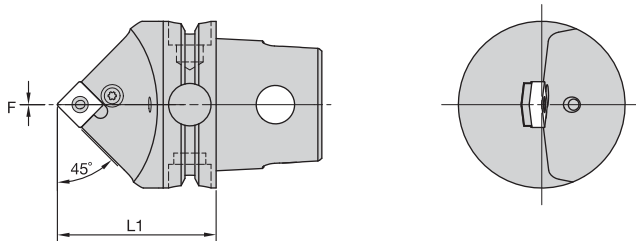
KM40TS Cutting Units



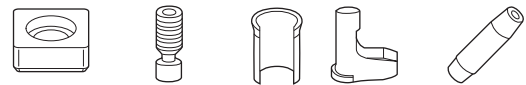
■ PDXN 93°



order number	catalog number	L1		LPR		F		D min		gage insert	shim	lever screw	shim pin	toggle lever	punch	kg	lbs
		mm	in	mm	in	mm	in	mm	in								
		right hand															
3902333	KM40TSPDXNR15	40	1.575	65	2.559	47	1.850	94	3.701	DN..150608/DN..442	512.153	514.128	513.023	511.024	515.018	0,66	1.45
		left hand															
3902332	KM40TSPDXNL15	40	1.575	65	2.559	47	1.850	94	3.701	DN..150608/DN..442	512.153	514.128	513.023	511.024	515.018	0,65	1.44



■ PSDN 45°



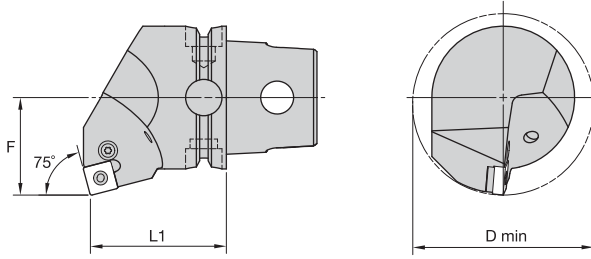
order number	catalog number	L1		F		gage insert	shim	lever screw	shim pin	toggle lever	punch	kg	lbs
		mm	in	mm	in								
3950775	KM40TSPSDNN09	40	1.575	0	.000	SN..090308/SN..322	512.053	514.118	513.019	511.018	515.018	0,26	.57
3950776	KM40TSPSDNN12	40	1.575	0	.000	SN..120408/SN..432	512.063	514.123	513.023	511.023	515.018	0,25	.54

KM40TS™ Cutting Units

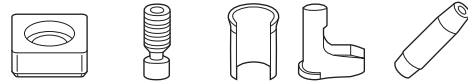
P-Clamping



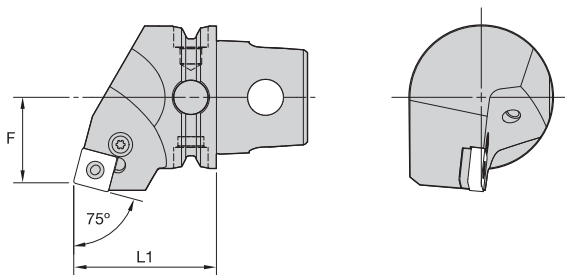
KM40TS Cutting Units



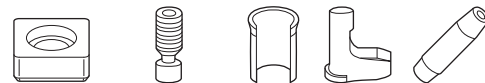
■ PSKN 75°



order number	catalog number	L1		F		D min		gage insert	shim	lever screw	shim pin	toggle lever	punch	kg	lbs
		mm	in	mm	in	mm	in								
		right hand													
3950778	KM40TSPSKNR12	40	1.575	27	1.063	50	1.969	SN..120408/SN..432	512.063	514.123	513.023	511.023	515.018	0,36	.79
		left hand													
3950777	KM40TSPSKNL12	40	1.575	27	1.063	50	1.969	SN..120408/SN..432	512.063	514.123	513.023	511.023	515.018	0,36	.79



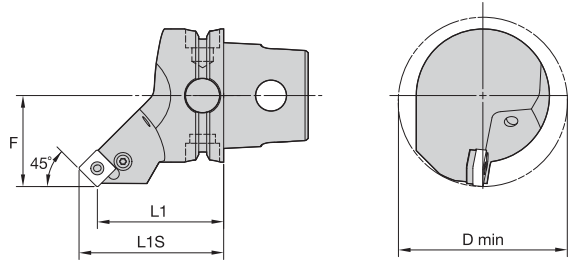
■ PSRN 75°



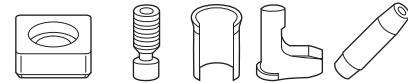
order number	catalog number	L1		F		gage insert	shim	lever screw	shim pin	toggle lever	punch	kg	lbs
		mm	in	mm	in								
		right hand											
3950780	KM40TSPSRNR12	40	1.575	24	.945	SN..120408/SN..432	512.063	514.123	513.023	511.023	515.018	0,31	.69
		left hand											
3950779	KM40TSPSRNL12	40	1.575	24	.945	SN..120408/SN..432	512.063	514.123	513.023	511.023	515.018	0,31	.69



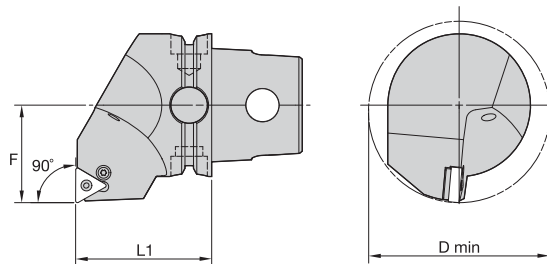
KM40TS Cutting Units



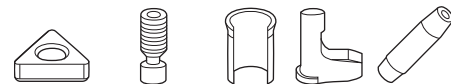
■ PSSN 45°



order number	catalog number	L1		L1S		F		D min		gage insert	shim	lever screw	shim pin	toggle lever	punch	kg	lbs
		mm	in	mm	in	mm	in	mm	in								
		right hand															
3950781	KM40TSPSSNR12	40	1.575	48,3	1.903	27	1.063	80	3.150	SN..120408/SN..432	512.063	514.123	513.023	511.023	515.018	0,31	.69



■ PTFN 90°



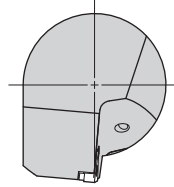
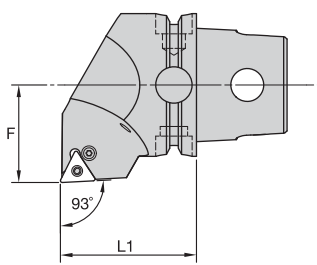
order number	catalog number	L1		F		D min		gage insert	shim	lever screw	shim pin	toggle lever	punch	kg	lbs
		mm	in	mm	in	mm	in								
		right hand													
3950783	KM40TSPTFNR16	40	1.575	27	1.063	50	1.969	TN..160408/TN..332	512.013	514.118	513.018	511.018	515.018	0,36	.78
		left hand													
3950782	KM40TSPTFNL16	40	1.575	27	1.063	50	1.969	TN..160408/TN..332	512.013	514.118	513.018	511.018	515.018	0,36	.79

KM40TS™ Cutting Units

P-Clamping



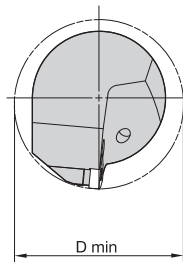
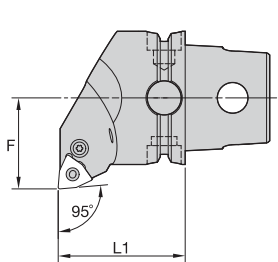
KM40TS Cutting Units



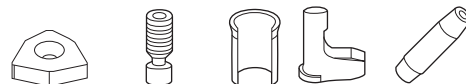
■ PTJN 93°



order number	catalog number	L1		F		gage insert	shim	lever screw	shim pin	toggle lever	punch	kg	lbs
		mm	in	mm	in								
right hand													
3950785	KM40TSP TJNR16	40	1.575	27	1.063	TN..160408/TN..332	512.013	514.118	513.018	511.018	515.018	0,34	.75
left hand													
3950784	KM40TSP TJNL16	40	1.575	27	1.063	TN..160408/TN..332	512.013	514.118	513.018	511.018	515.018	0,34	.75



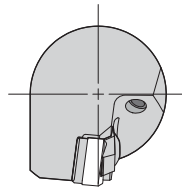
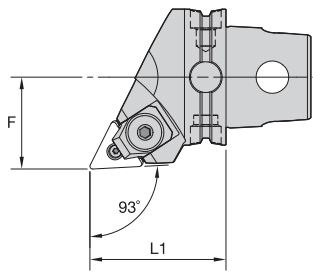
■ PWLN 95°



order number	catalog number	L1		F		D min	gage insert	shim	lever screw	shim pin	toggle lever	punch	kg	lbs
		mm	in	mm	in									
right hand														
3950788	KM40TSPWLN R06	40	1.575	27	1.063	50 1.969	WN..060408/WN..332	512.134	514.118	513.018	511.018	515.018	0,33	.73
3950789	KM40TSPWLN R08	40	1.575	27	1.063	50 1.969	WN..080408/WN..432	512.135	514.123	513.023	511.023	515.018	0,32	.70
left hand														
3950786	KM40TSPWLN L06	40	1.575	27	1.063	50 1.969	WN..060408/WN..332	512.134	514.118	513.018	511.018	515.018	0,33	.73
3950787	KM40TSPWLN L08	40	1.575	27	1.063	50 1.969	WN..080408/WN..432	512.135	514.123	513.023	511.023	515.018	0,32	.71



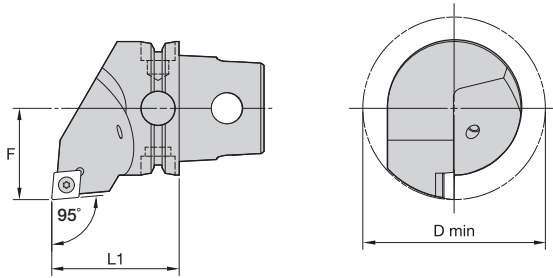
KM40TS Cutting Units



■ WTJN

order number	catalog number	L1		F		gage insert	clamp	lock pin	shim	retaining ring	Wedgelock screw	kg	lbs
		mm	in	mm	in								
	right hand												
3964067	KM40TSWTJNR16	40	1.575	27	1.063	TN..160408/TN..332	WC4	FP4	SM290	MRA5	MS988	0,28	.63
	left hand												
3964066	KM40TSWTJNL16	40	1.575	27	1.063	TN..160408/TN..332	WC4	FP4	SM290	MRA5	MS988	0,28	.63

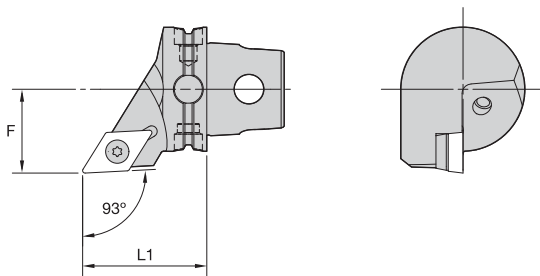




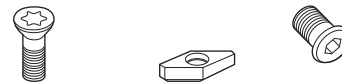
■ SCLC 95°



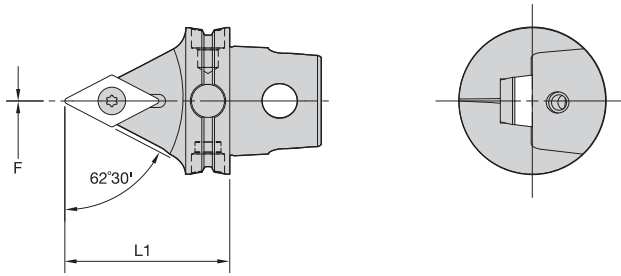
order number	catalog number	L1		F		D min		gage insert	insert screw	shim	shim screw	kg	lbs
		mm	in	mm	in	mm	in						
	right hand												
3960003	KM40TSSCLCR12	40	1.575	27	1.063	50	1.969	CC..120408/CC..432	MS1158	SKCP453	SRS4	0,32	.70
	left hand												
3959952	KM40TSSCLCL12	40	1.575	27	1.063	50	1.969	CC..120408/CC..432	MS1158	SKCP453	SRS4	0,32	.70



■ SDJC 93°

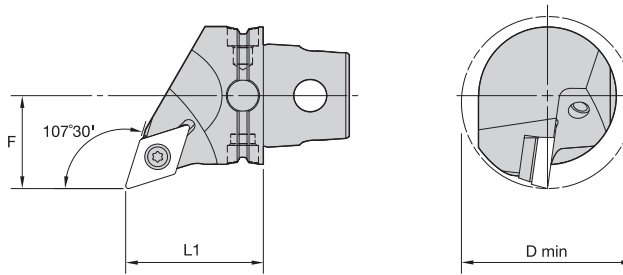
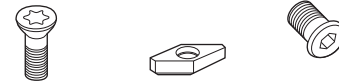


order number	catalog number	L1		F		gage insert	insert screw	shim	shim screw	kg	lbs
		mm	in	mm	in						
	right hand										
3960005	KM40TSSDJCR11	40	1.575	27	1.063	DC..11T308/DC..3252	MS1156	SKDP343	SRS3	0,25	.55
3960007	KM40TSSDJCR15	40	1.575	27	1.063	DC..150408/DC..432	MS1158	SKDP453	SRS4	0,24	.53
	left hand										
3960004	KM40TSSDJCL11	40	1.575	27	1.063	DC..11T308/DC..3252	MS1156	SKDP343	SRS3	0,25	.55
3960006	KM40TSSDJCL15	40	1.575	27	1.063	DC..150408/DC..432	MS1158	SKDP453	SRS4	0,24	.52



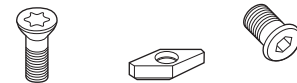
■ SDNC 62° 30'

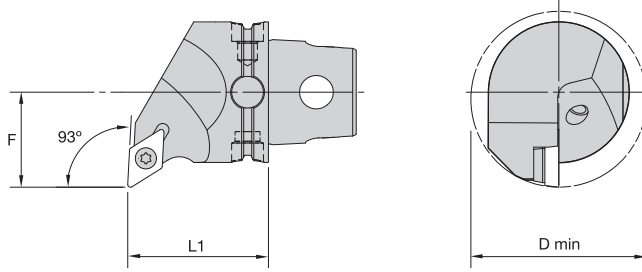
order number	catalog number	L1		F		gage insert	insert screw	shim	shim screw	kg	lbs
		mm	in	mm	in						
3960008	KM40TSSDNCN15045M	45	1.772	0	.000	DC..150408/DC..432	MS1158	SKDP453	SRS4	0,23	.50



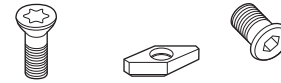
■ SDQC 107° 30'

order number	catalog number	L1		F		D min	gage insert	insert screw	shim	shim screw	kg	lbs
		mm	in	mm	in							
	right hand											
3960010	KM40TSSDQCR11	40	1.575	27	1.063	50	1.969	DC..11T308/DC..3252	MS1156	SKDP343	SRS3	0,27 .61
3960012	KM40TSSDQCR15	40	1.575	27	1.063	50	1.969	DC..150408/DC..432	MS1158	SKDP453	SRS4	0,27 .60
	left hand											
3960009	KM40TSSDQCL11	40	1.575	27	1.063	50	1.969	DC..11T308/DC..3252	MS1156	SKDP343	SRS3	0,27 .61
3960011	KM40TSSDQCL15	40	1.575	27	1.063	50	1.969	DC..150408/DC..432	MS1158	SKDP453	SRS4	0,27 .60

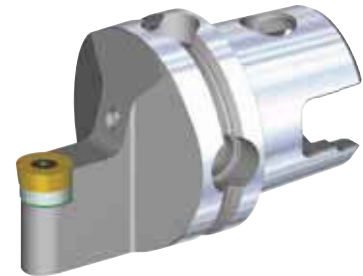
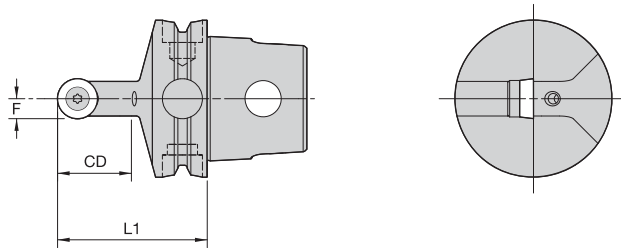




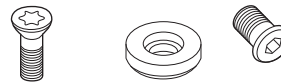
■ SDUC 93°



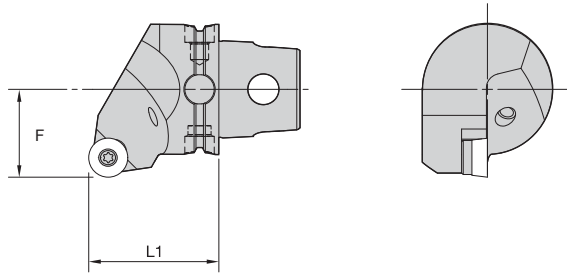
order number	catalog number	L1		F		D min		gage insert	insert screw	shim	shim screw	kg	lbs
		mm	in	mm	in	mm	in						
		right hand											
3960014	KM40TSSDUCR11	40	1.575	27	1.063	50	1.969	DC..11T308/DC..3252	MS1156	SKDP343	SRS3	0,30	.66
		left hand											
3960013	KM40TSSDUCL11	40	1.575	27	1.063	50	1.969	DC..11T308/DC..3252	MS1156	SKDP343	SRS3	0,30	.66



■ SRDC 0°



order number	catalog number	L1		F		CD		gage insert	insert screw	shim	shim screw	kg	lbs
		mm	in	mm	in	mm	in						
3960015	KM40TSSRDCN06	40	1.575	3	.118	12	.472	RC..0602M0	MS1153	—	—	0,22	.48
3960016	KM40TSSRDCN08	40	1.575	4	.158	16	.630	RC..0803M0	MS1154	—	—	0,22	.48
3960017	KM40TSSRDCN10	40	1.575	5	.197	20	.787	RC..10T3M0	MS1156	SKRN100300	SRS3	0,21	.47

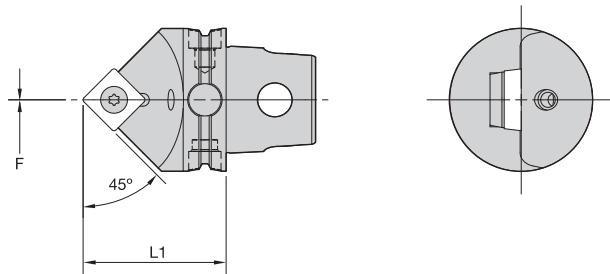


KM40TS Cutting Units



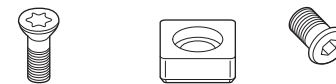
■ SRGC 0°

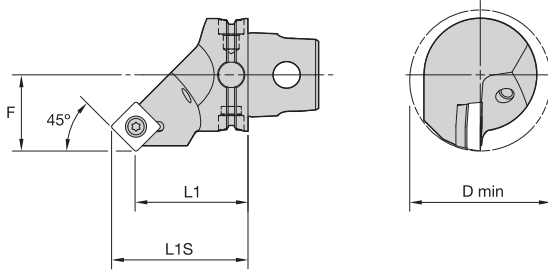
order number	catalog number	L1		F		gage insert	insert screw	shim	shim screw	kg	lbs
		mm	in	mm	in						
right hand											
3960019	KM40TSSRGCR10	40	1.575	27	1.063	RC..10T3M0	MS1156	SKRN100300	SRS3	0,31	.69
3960021	KM40TSSRGCR12	40	1.575	27	1.063	RC..1204M0	MS1156	SKRN1203M0	SRS3	0,31	.69
left hand											
3960018	KM40TSSRGCL10	40	1.575	27	1.063	RC..10T3M0	MS1156	SKRN100300	SRS3	0,32	.70
3960020	KM40TSSRGCL12	40	1.575	27	1.063	RC..1204M0	MS1156	SKRN1203M0	SRS3	0,31	.69



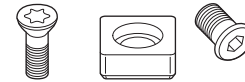
■ SSDC 45°

order number	catalog number	L1		F		gage insert	insert screw	shim	shim screw	kg	lbs
		mm	in	mm	in						
3960022	KM40TSSSDCN12	40	1.575	0	.000	SC..120408/SC..432	MS1158	SKSP453	SRS4	0,25	.55

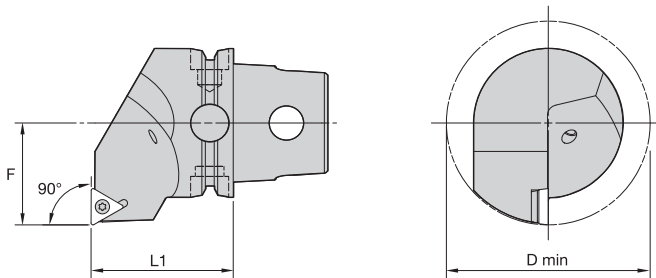




SSSC 45°



order number	catalog number	L1		L1S		F		D min		gage insert	insert screw	shim	shim screw	kg	lbs
		mm	in	mm	in	mm	in	mm	in						
		right hand													
3960034	KM40TSSSCR12	40	1.575	48,3	1.902	27	1.063	50	1.969	SC..120408/SC..432	MS1158	SKSP453	SRS4	0,29	.64
		left hand													
3960033	KM40TSSSCL12	40	1.575	48,3	1.902	27	1.063	50	1.969	SC..120408/SC..432	MS1158	SKSP453	SRS4	0,29	.64



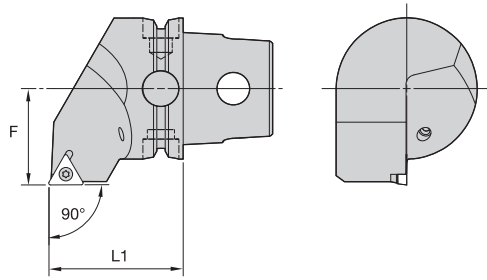
STFC 90°



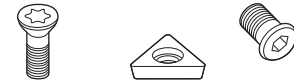
order number	catalog number	L1		F		D min		gage insert	insert screw	shim	shim screw	kg	lbs
		mm	in	mm	in	mm	in						
		right hand											
3960036	KM40TSSTFCR16	40	1.575	27	1.063	50	1.969	TC..16T308/TC..3252	MS1156	SKTP343	SRS3	0,33	.72
		left hand											
3960035	KM40TSSTFCL16	40	1.575	27	1.063	50	1.969	TC..16T308/TC..3252	MS1156	SKTP343	SRS3	0,33	.73



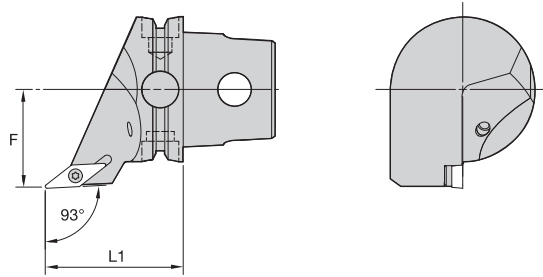
KM40TS Cutting Units



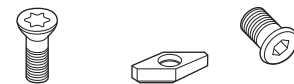
■ STGC 90°



order number	catalog number	L1		F		gage insert	insert screw	shim	shim screw	kg	lbs
		mm	in	mm	in						
	right hand										
3960038	KM40TSSTGCR16	40	1.575	27	1.063	TC..16T308/TC..3252	MS1156	SKTP343	SRS3	0,33	.73
	left hand										
3960037	KM40TSSTGCL16	40	1.575	27	1.063	TC..16T308/TC..3252	MS1156	SKTP343	SRS3	0,33	.73



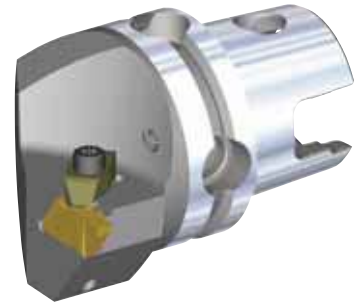
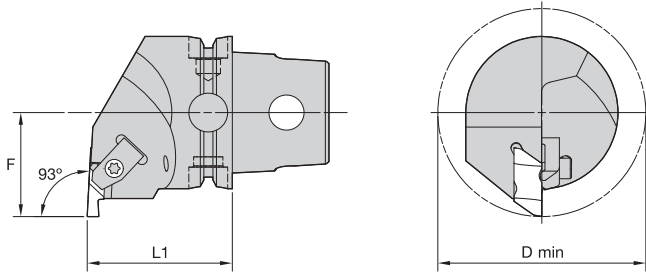
■ SVJB 93°



order number	catalog number	L1		F		gage insert	insert screw	shim	shim screw	kg	lbs
		mm	in	mm	in						
	right hand										
3960040	KM40TSSVJBR16	47	1.850	27	1.063	VB..160408/VB..332	MS1156	SKVN343	SRS3	0,27	.59
	left hand										
3960039	KM40TSSVJBL16	47	1.850	27	1.063	VB..160408/VB..332	MS1156	SKVN343	SRS3	0,27	.59

KM40TS™ Cutting Units

TopThread™ and TopGroove™



KM40TS Cutting Units



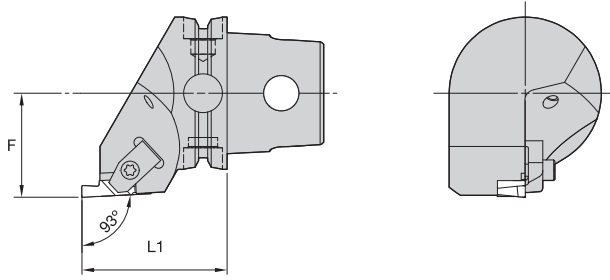
■ NE 93°

order number	catalog number	L1		F		D min		gage insert	clamp	clamp screw	kg	lbs
		mm	in	mm	in	mm	in					
right hand												
3902285	KM40TSNER2	40	1.575	27	1.063	54	2.126	NG2L	CM75	MS1488	0,31	.68
3902286	KM40TSNER3	40	1.575	27	1.063	54	2.126	NG3L	CM73	MS1489	0,32	.70
3902287	KM40TSNER4	40	1.575	27	1.063	54	2.126	NG4L	CM73	MS1489	0,30	.66
left hand												
3902132	KM40TSNEL2	40	1.575	27	1.063	54	2.126	NG2R	CM74	MS1488	0,31	.68
3902283	KM40TSNEL3	40	1.575	27	1.063	54	2.126	NG3R	CM72	MS1489	0,32	.70
3902284	KM40TSNEL4	40	1.575	27	1.063	54	2.126	NG4R	CM72	MS1489	0,30	.66



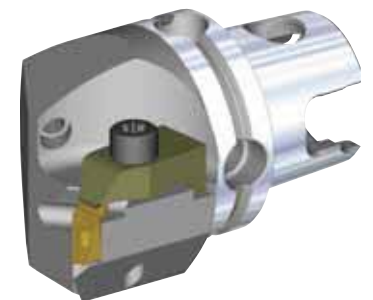
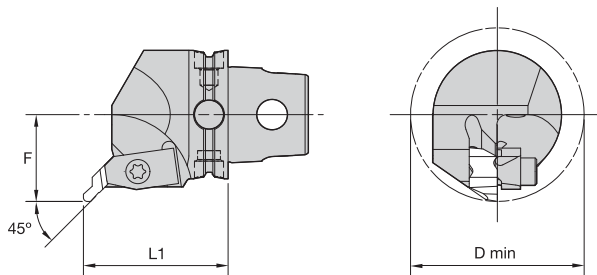


KM40TS Cutting Units



■ NS 93°

order number	catalog number	L1		F		gage insert	clamp	clamp screw	kg	lbs
		mm	in	mm	in					
right hand										
3902293	KM40TSNSR2	40	1.575	27	1.063	NG2R	CM74	MS1488	0,32	.70
3902294	KM40TSNSR3	47	1.850	27	1.063	NG3R	CM72	MS1489	0,32	.71
3902295	KM40TSNSR4	47	1.850	27	1.063	NG4R	CM72	MS1489	0,31	.68
left hand										
3902290	KM40TSNSL2	40	1.575	27	1.063	NG2L	CM75	MS1488	0,32	.70
3902291	KM40TSNSL3	47	1.850	27	1.063	NG3L	CM73	MS1489	0,33	.72
3902292	KM40TSNSL4	47	1.850	27	1.063	NG4L	CM73	MS1489	0,31	.68



■ NR 45°

order number	catalog number	L1		F		D min		gage insert	clamp	clamping screw	kg	lbs
		mm	in	mm	in	mm	in					
right hand												
3902289	KM40TSNRR3045M	45	1.772	27	1.063	54	2.126	NU3L	CM73	MS1489	0,34	.75
left hand												
3902288	KM40TSNRL3045M	45	1.772	27	1.063	54	2.126	NU3R	CM72	MS1489	0,33	.74

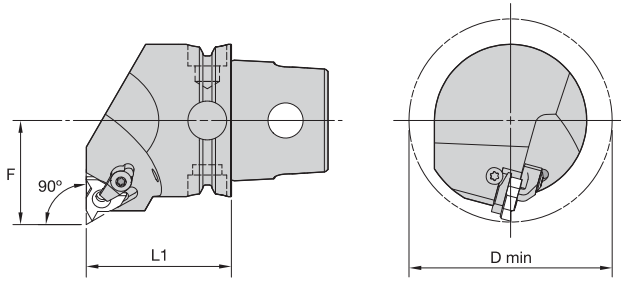


KM40TS™ Cutting Units

Laydown Threading



KM40TS Cutting Units



■ LSE-N 90° • Internal Only

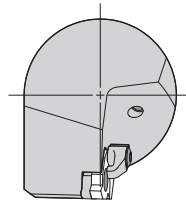
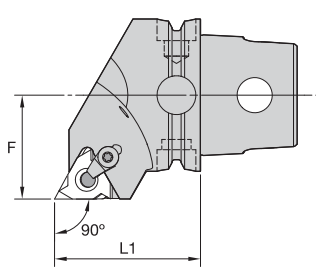


order number	catalog number	L1		F		D min		gage insert	insert screw	shim	shim screw	clamp assembly	kg	lbs
		mm	in	mm	in	mm	in							
right hand														
3950832	KM40TSLSER16N	40	1.575	27	1.063	54	2.126	LT16NR	SSA3T	SMYI3	SSY3T	CKC3	0,35	.77
3950854	KM40TSLSER22N	40	1.575	27	1.063	54	2.126	LT22NR	SSA4T	SMYI4	SSY4T	CKC4	0,35	.77
3959399	KM40TSLSER27N	45	1.772	27	1.063	54	2.126	LT27NR	SSA5T	SMYI5	SSY5T	CKC5	0,39	.86
left hand														
3950831	KM40TSLSEL16N	40	1.575	27	1.063	54	2.126	LT16NL	SSA3T	SMYE3	SSY3T	CKC3	0,35	.77
3950853	KM40TSLSEL22N	40	1.575	27	1.063	54	2.126	LT22NL	SSA4T	SMYE4	SSY4T	CKC4	0,35	.77
3959398	KM40TSLSEL27N	45	1.772	27	1.063	54	2.126	LT27NL	SSA5T	SMYE5	SSY5T	CKC5	0,39	.86

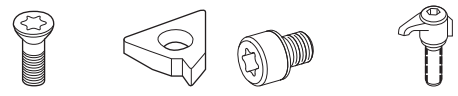
NOTE: Cutting units are supplied with insert screw and clamp assembly. However, tools are designed to use either the insert screw or the clamp assembly, not both.



KM40TS Cutting Units

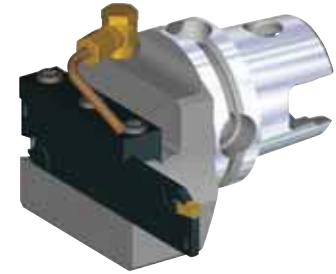
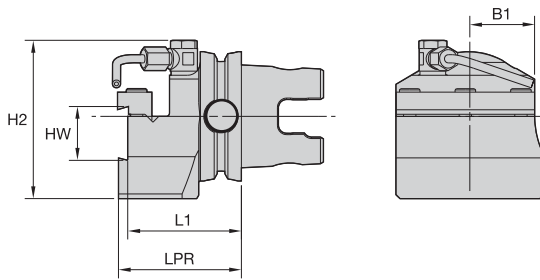


■ LSS 90°



order number	catalog number	L1		F		gage insert	insert screw	shim	shim screw	clamp assembly	kg	lbs
		mm	in	mm	in							
right hand												
3950857	KM40TSLSSR16	40	1.575	27	1.063	LT16ER	SSA3T	SMYE3	SSY3T	CKC3	0,31	.68
3950858	KM40TSLSSR22	40	1.575	27	1.063	LT22ER	SSA4T	SMYE4	SSY4T	CKC4	0,30	.66
3959401	KM40TSLSSR27	45	1.772	27	1.063	LT27ER	SSA5T	SMYE5	SSY5T	CKC5	0,37	.82
left hand												
3950855	KM40TSLSSL16	40	1.575	27	1.063	LT16EL	SSA3T	SMYI3	SSY3T	CKC3	0,32	.70
3950856	KM40TSLSSL22	40	1.575	27	1.063	LT22EL	SSA4T	SMYI4	SSY4T	CKC4	0,31	.68
3959400	KM40TSLSSL27	45	1.772	27	1.063	LT27EL	SSA5T	SMYI5	SSY5T	CKC5	0,37	.82


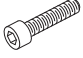

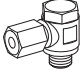
NOTE: Cutting units are supplied with insert screw and clamp assembly. However, tools are designed to use either the insert screw or the clamp assembly, not both.



■ BE • End Mount

order number	catalog number	L1		LPR		H2		HW		B1		cartridge size	cartridge 1	kg	lbs
		mm	in	mm	in	mm	in	mm	in	mm	in				
3950835	right hand KM40TSBER	50,3	1.980	55	2.16	66	2.58	26	1.02	20	.79	26	A2BNSN26...	1,07	2.36
3950834	left hand KM40TSBEL	50,3	1.980	55	2.16	66	2.58	26	1.02	20	.79	26	A2BNSN26...	1,07	2.36

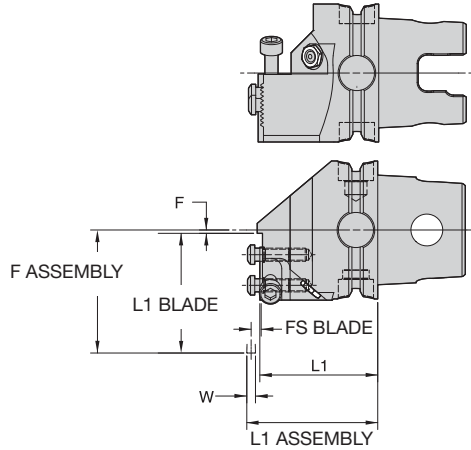
■ Spare Parts

catalog number				
	clamp	clamp screw	coolant tube	coolant swivel base
right hand KM40TSBER	CGS4	MS1595	12649910900	12649910800
left hand KM40TSBEL	CGS4	MS1595	12649910900	12649910800

NOTE: For cut-off blades, see the WIDIA Turning (A-09-02078) catalog.



KM40TS Cutting Units

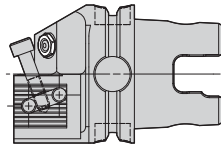


F ASSEMBLY = L1 BLADE - F
L1 ASSEMBLY = W/2 + L1 + FS BLADE - 0,787mm

■ **WGME**

order number	catalog number	L1		F		button-head cap screw	nozzle	socket-head cap screw	kg	lbs	
		mm	in	mm	in						
3949874	right hand		53,79	2.118	-9,98	-0.393	606256	PMT08430	MS337	0,56	1.24
	KM40TSWGMER55M										
3949875	left hand		53,79	2.118	-9,98	-0.393	606256	PMT08430	MS337	0,56	1.24
	KM40TSWGMEL55M										

NOTE: For SLS cartridges and WMT inserts, see WIDIA Turning (A-09-02078) catalog.
Right-hand cutting units use left-hand cartridges.



F ASSEMBLY = W/2 + F + FS BLADE - 0,787mm
L1 ASSEMBLY = L1 + L1 BLADE

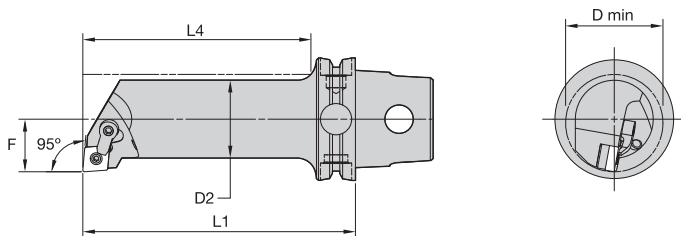
■ **WGMS**

order number	catalog number	L1		F		nozzle	socket-head cap screw	kg	lbs	
		mm	in	mm	in					
3949802	right hand		24,52	.965	15,79	.622	PMT08430	MS337	0,49	1.08
	KM40TSWGMRS55M									
3949873	left hand		24,52	.965	15,79	.622	PMT08430	MS337	0,49	1.08
	KM40TSWGMSL55M									

NOTE: For SLS cartridges and WMT inserts, see WIDIA Turning (A-09-02078) catalog.
Right-hand cutting units use right-hand cartridges.

KM40TS™ Internal Cutting Units



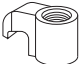

M-Clamping

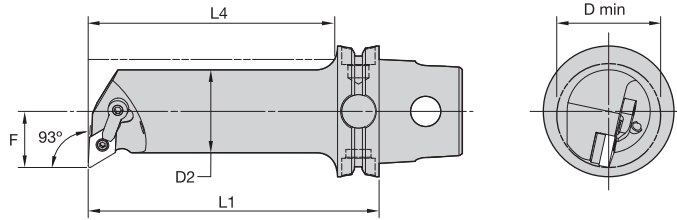


■ MCLN 95°

order number	catalog number	D2		D min		F		L4		L1		gage insert	kg	lbs
		mm	in	mm	in	mm	in	mm	in	mm	in			
right hand														
3955549	KM40TSS25EMCLNR12	25	.98	32	1.26	17	.669	55	2.17	70	2.756	CN..120408/CN..432	0,35	.76
3955551	KM40TSS25HMCLNR12	25	.98	32	1.26	17	.669	75	2.95	100	3.937	CN..120408/CN..432	0,50	1.10
3955553	KM40TSS32GMCLNR12	32	1.26	40	1.57	22	.866	76	2.99	90	3.543	CN..120408/CN..432	0,59	1.29
3955555	KM40TSS32JMCLNR12	32	1.26	40	1.57	22	.866	96	3.78	110	4.331	CN..120408/CN..432	0,71	1.56
left hand														
3955548	KM40TSS25EMCLNL12	25	.98	32	1.26	17	.669	55	2.17	70	2.756	CN..120408/CN..432	0,35	.76
3955550	KM40TSS25HMCLNL12	25	.98	32	1.26	17	.669	75	2.95	100	3.937	CN..120408/CN..432	0,50	1.10
3955552	KM40TSS32GMCLNL12	32	1.26	40	1.57	22	.866	76	2.99	90	3.543	CN..120408/CN..432	0,59	1.29
3955554	KM40TSS32JMCLNL12	32	1.26	40	1.57	22	.866	96	3.78	110	4.331	CN..120408/CN..432	0,71	1.56

■ Spare Parts

catalog number	 shim	 lock pin	 clamp	 clamp screw
right hand				
KM40TSS25EMCLNR12	—	KLM43	CKM20LP	STCM11
KM40TSS25HMCLNR12	—	KLM43	CKM20LP	STCM11
KM40TSS32GMCLNR12	ICSN432	KLM46	CKM20LP	STCM11
KM40TSS32JMCLNR12	ICSN432	KLM46	CKM20LP	STCM11
left hand				
KM40TSS25EMCLNL12	—	KLM43	CKM20LP	STCM11
KM40TSS25HMCLNL12	—	KLM43	CKM20LP	STCM11
KM40TSS32GMCLNL12	ICSN432	KLM46	CKM20LP	STCM11
KM40TSS32JMCLNL12	ICSN432	KLM46	CKM20LP	STCM11



KM40TS Internal Cutting Units

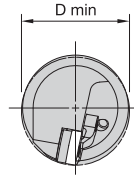
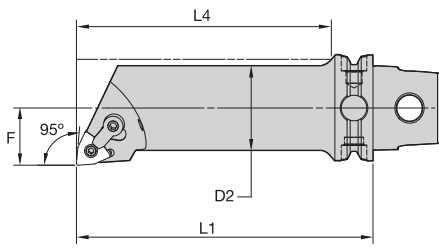


■ MDUN 93°

order number	catalog number	D2		D min		F		L4		L1		gage insert	kg	lbs
		mm	in	mm	in	mm	in	mm	in	mm	in			
right hand														
3959375	KM40TSS25EMDUNR15	25	.98	32	1.26	17	.669	55	2.17	70	2.756	DN..150408/DN..432	0,33	.74
3959377	KM40TSS25HMDUNR15	25	.98	32	1.26	17	.669	75	2.95	100	3.937	DN..150408/DN..432	0,49	1.07
3959379	KM40TSS32GMDUNR15	32	1.26	40	1.57	22	.866	76	2.99	90	3.543	DN..150408/DN..432	0,57	1.26
3959381	KM40TSS32JMDUNR15	32	1.26	40	1.57	22	.866	96	3.78	110	4.331	DN..150408/DN..432	0,69	1.53
left hand														
3959374	KM40TSS25EMDUNL15	25	.98	32	1.26	17	.669	55	2.17	70	2.756	DN..150408/DN..432	0,33	.74
3959376	KM40TSS25HMDUNL15	25	.98	32	1.26	17	.669	75	2.95	100	3.937	DN..150408/DN..432	0,49	1.08
3959378	KM40TSS32GMDUNL15	32	1.26	40	1.57	22	.866	76	2.99	90	3.543	DN..150408/DN..432	0,57	1.26
3959380	KM40TSS32JMDUNL15	32	1.26	40	1.57	22	.866	96	3.78	110	4.331	DN..150408/DN..432	0,69	1.53

■ Spare Parts

catalog number	shim	lock pin	clamp	clamp screw
right hand				
KM40TSS25EMDUNR15	—	KLM43	CKM20LP	STCM11
KM40TSS25HMDUNR15	—	KLM43	CKM20LP	STCM11
KM40TSS32GMDUNR15	IDSN432	KLM46	CKM23LP	STCM11
KM40TSS32JMDUNR15	IDSN432	KLM46	CKM23LP	STCM11
left hand				
KM40TSS25EMDUNL15	—	KLM43	CKM20LP	STCM11
KM40TSS25HMDUNL15	—	KLM43	CKM20LP	STCM11
KM40TSS32GMDUNL15	IDSN432	KLM46	CKM23LP	STCM11
KM40TSS32JMDUNL15	IDSN432	KLM46	CKM23LP	STCM11



■ MWLN 95°

order number	catalog number	D2		D min		F		L4		L1		gage insert	kg lbs		
		mm	in	mm	in	mm	in	mm	in	mm	in				
		right hand													
3959331	KM40TSS25HMWLN08	25	.98	32	1.26	17	.669	75	2.95	100	3.937	WN..080408/WN..432	0,50	1.10	
3959373	KM40TSS32JMWLN08	32	1.26	40	1.57	22	.866	96	3.78	110	4.331	WN..080408/WN..432	0,69	1.53	
		left hand													
3959330	KM40TSS25HMWLN08	25	.98	32	1.26	17	.669	75	2.95	100	3.937	WN..080408/WN..432	0,50	1.10	
3959332	KM40TSS32JMWLN08	32	1.26	40	1.57	22	.866	96	3.78	110	4.331	WN..080408/WN..432	0,69	1.53	

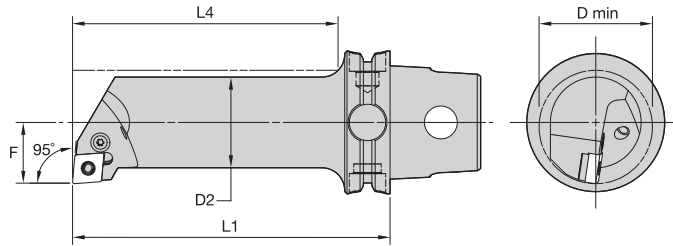
■ Spare Parts



catalog number	shim	lock pin	clamp	clamp screw
	right hand			
KM40TSS25HMWLN08	—	KLM43	CKM20LP	STCM11
KM40TSS32JMWLN08	IWSN433	KLM46	CKM20LP	STCM11
	left hand			
KM40TSS25HMWLN08	—	KLM43	CKM20LP	STCM11
KM40TSS32JMWLN08	IWSN433	KLM46	CKM20LP	STCM11





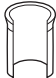


KM40TS Internal Cutting Units



■ PCLN 95°

order number	catalog number	D2		D min		F		L4		L1		gage insert	kg lbs	
		mm	in	mm	in	mm	in	mm	in	mm	in			
right hand														
3959339	KM40TSS25HPCLNR12	25	.98	32	1.26	17	.669	75	2.95	100	3.937	CN..120408/CN..432	0,49	1.09
3959337	KM40TSS25GPCLNR12	25	.98	32	1.26	17	.669	77	3.04	90	3.543	CN..120408/CN..432	0,41	.90
3959341	KM40TSS32GPCLNR12	32	1.26	40	1.57	22	.866	76	2.99	90	3.543	CN..120408/CN..432	0,59	1.29
left hand														
3959338	KM40TSS25HPCLNL12	25	.98	32	1.26	17	.669	75	2.95	100	3.937	CN..120408/CN..432	0,49	1.09
3959336	KM40TSS25GPCLNL12	25	.98	32	1.26	17	.669	77	3.04	90	3.543	CN..120408/CN..432	0,41	.90
3959340	KM40TSS32GPCLNL12	32	1.26	40	1.57	22	.866	76	2.99	90	3.543	CN..120408/CN..432	0,59	1.29

■ Spare Parts

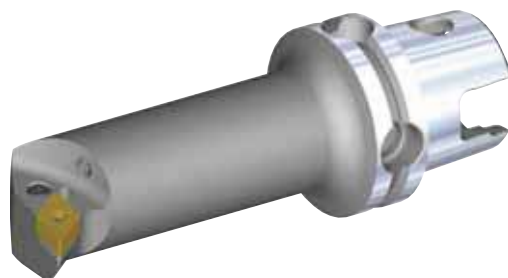
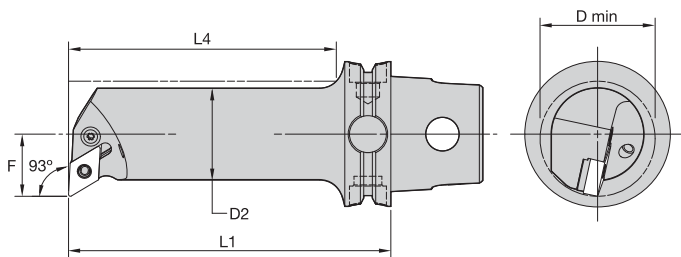
catalog number	 shim	 lever screw	 shim pin	 toggle lever	 punch
right hand					
KM40TSS25GPCLNR12	—	514.122	—	511.022	—
KM40TSS25HPCLNR12	—	514.122	—	511.022	—
KM40TSS32GPCLNR12	512.112	514.123	513.023	511.023	515.018
left hand					
KM40TSS25GPCLNL12	—	514.122	—	511.022	—
KM40TSS25HPCLNL12	—	514.122	—	511.022	—
KM40TSS32GPCLNL12	512.112	514.123	513.023	511.023	515.018

KM40TS™ Internal Cutting Units

P-Clamping



KM40TS Internal Cutting Units



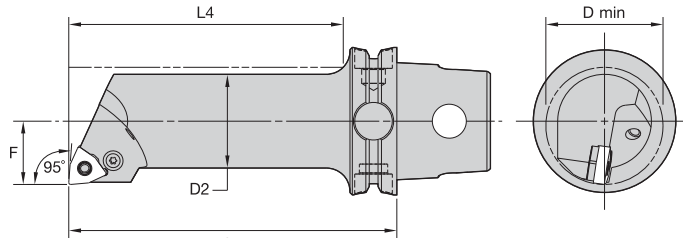
■ PDUN 93°

order number	catalog number	D2		D min		F		L4		L1		gage insert	kg	lbs	
		mm	in	mm	in	mm	in	mm	in	mm	in				
		right hand													
3959343	KM40TSS25GPDUNR11	25	.98	32	1.26	17	.669	77	3.04	90	3.543	DN..110408/DN..332	0,41	.900	
		left hand													
3959342	KM40TSS25GPDUNL11	25	.98	32	1.26	17	.669	77	3.04	90	3.543	DN..110408/DN..332	0,41	.900	

■ Spare Parts



catalog number	lever screw	toggle lever
right hand KM40TSS25GPDUNR11	514.112	511.015
left hand KM40TSS25GPDUNL11	514.112	511.015





KM40TS Internal Cutting Units



■ PWLN 95°

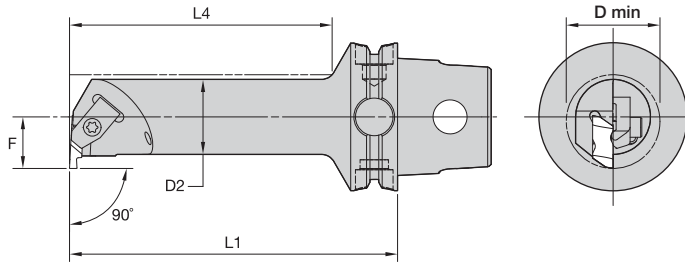
order number	catalog number	D2		D min		F		L4		L1		gage insert	kg	lbs
		mm	in	mm	in	mm	in	mm	in	mm	in			
right hand														
3959345	KM40TSS25EPWLNRO8	25	.98	32	1.26	17	.669	55	2.17	70	2.756	WN..080408/WN..432	0,34	.75
3959351	KM40TSS25HPWLNRO8	25	.98	32	1.26	17	.669	75	2.95	100	3.937	WN..080408/WN..432	0,49	1.08
3959347	KM40TSS25GPWLNRO6	25	.98	32	1.26	17	.669	77	3.04	90	3.543	WN..060408/WN..332	0,41	.90
3959349	KM40TSS25GPWLNRO8	25	.98	32	1.26	17	.669	77	3.04	90	3.543	WN..080408/WN..432	0,40	.89
left hand														
3959344	KM40TSS25EPWLNLO8	25	.98	32	1.26	17	.669	55	2.17	70	2.756	WN..080408/WN..432	0,34	.75
3959350	KM40TSS25HPWLNLO8	25	.98	32	1.26	17	.669	75	2.95	100	3.937	WN..080408/WN..432	0,49	1.08
3959346	KM40TSS25GPWLNLO6	25	.98	32	1.26	17	.669	77	3.04	90	3.543	WN..060408/WN..332	0,41	.90
3959348	KM40TSS25GPWLNLO8	25	.98	32	1.26	17	.669	77	3.04	90	3.543	WN..080408/WN..432	0,40	.89

■ Spare Parts

catalog number	 lever screw	 toggle lever
right hand		
KM40TSS25EPWLNRO8	514.122	511.022
KM40TSS25GPWLNRO6	514.112	511.030
KM40TSS25GPWLNRO8	514.122	511.022
KM40TSS25HPWLNRO8	514.122	511.022
left hand		
KM40TSS25EPWLNLO8	514.122	511.022
KM40TSS25GPWLNLO6	514.112	511.030
KM40TSS25GPWLNLO8	514.122	511.022
KM40TSS25HPWLNLO8	514.122	511.022

KM40TS™ Internal Cutting Units

TopThread™ and TopGroove™





■ NE 90° • Steel

order number	catalog number	D2		D min		F		L4		L1		gage insert	kg	lbs	
		mm	in	mm	in	mm	in	mm	in	mm	in				
right hand															
3955481	KM40TSS12ENER2	12	.47	19	.73	11	.433	42	1.655	70	2.756	NG2L	0,27	.58	
3955483	KM40TSS16FNER2	16	.63	20	.79	11	.433	56	2.209	80	3.150	NG2L	0,28	.62	
3955485	KM40TSS20GNER2	20	.79	25	.98	13	.512	70	2.757	90	3.543	NG2L	0,35	.76	
3955487	KM40TSS25ENER2	25	.98	32	1.26	17	.669	55	2.169	70	2.756	NG2L	0,34	.75	
3955491	KM40TSS25ENER3	25	.98	34	1.34	17	.669	55	2.169	70	2.756	NG3L	0,35	.77	
3955489	KM40TSS25HNER2	25	.98	32	1.26	17	.669	75	2.954	100	3.937	NG2L	0,49	1.08	
3955493	KM40TSS25HNER3	25	.98	34	1.34	17	.669	75	2.954	100	3.937	NG3L	0,49	1.09	
3955497	KM40TSS32GNER3	32	1.26	40	1.57	22	.866	76	2.993	90	3.543	NG3L	0,55	1.21	
3955495	KM40TSS32JNER3	32	1.26	40	1.57	22	.866	96	3.780	110	4.331	NG3L	0,67	1.48	
left hand															
3955480	KM40TSS12ENEL2	12	.47	19	.73	11	.433	42	1.655	70	2.756	NG2R	0,27	.59	
3955482	KM40TSS16FNEL2	16	.63	20	.79	11	.433	56	2.209	80	3.150	NG2R	0,28	.62	
3955484	KM40TSS20GNEL2	20	.79	25	.98	13	.512	70	2.757	90	3.543	NG2R	0,35	.76	
3955486	KM40TSS25ENEL2	25	.98	32	1.26	17	.669	55	2.169	70	2.756	NG2R	0,34	.75	
3955490	KM40TSS25ENEL3	25	.98	34	1.34	17	.669	55	2.169	70	2.756	NG3R	0,35	.77	
3955492	KM40TSS25HNEL3	25	.98	34	1.34	17	.669	75	2.954	100	3.937	NG3R	0,49	1.09	
3955488	KM40TSS25HNEL2	25	.98	32	1.26	17	.669	75	2.954	100	3.937	NG2R	0,49	1.08	
3955496	KM40TSS32GNEL3	32	1.26	40	1.57	22	.866	76	2.993	90	3.543	NG3R	0,55	1.21	
3955494	KM40TSS32JNEL3	32	1.26	40	1.57	22	.866	96	3.780	110	4.331	NG3R	0,67	1.48	

(continued)

(NE 90° • Steel continued)

■ Spare Parts

catalog number	 clamp	 clamp screw
right hand		
KM40TSS12ENER2	CM147	MS1488
KM40TSS16FNER2	CM147	MS1488
KM40TSS20GNER2	CM75	MS1488
KM40TSS25ENER2	CM75	MS1488
KM40TSS25ENER3	CM73	MS1489
KM40TSS25HNER2	CM75	MS1488
KM40TSS25HNER3	CM73	MS1489
KM40TSS32GNER3	CM73	MS1489
KM40TSS32JNER3	CM73	MS1489
left hand		
KM40TSS12ENEL2	CM146	MS1488
KM40TSS16FNEL2	CM146	MS1488
KM40TSS20GNEL2	CM74	MS1488
KM40TSS25ENEL2	CM74	MS1488
KM40TSS25ENEL3	CM72	MS1489
KM40TSS25HNEL2	CM74	MS1488
KM40TSS25HNEL3	CM72	MS1489
KM40TSS32GNEL3	CM72	MS1489
KM40TSS32JNEL3	CM72	MS1489

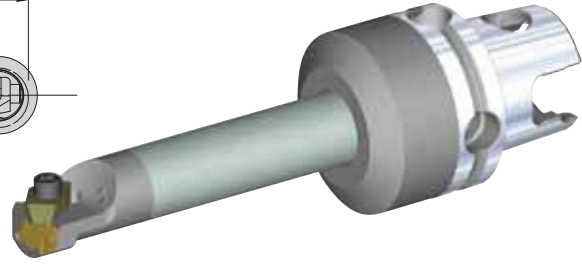
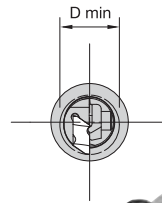
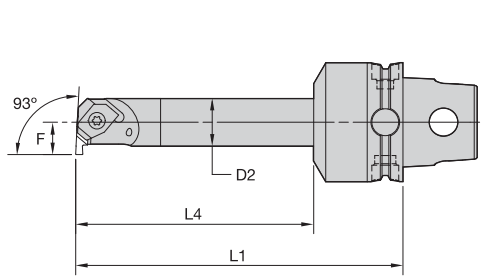
KM40TS Internal Cutting Units

KM40TS™ Internal Cutting Units

TopThread™ and TopGroove™



KM40TS Internal Cutting Units



■ NE 90° • Carbide

order number	catalog number	D2		D min		F		L4		L1		gage insert	kg	lbs
		mm	in	mm	in	mm	in	mm	in	mm	in			
	right hand													
3951836	KM40TSE16JNER2	16	.63	20	.79	11	.433	80	3.15	110	4.331	NG2L	0,41	.90
	left hand													
3951835	KM40TSE16JNEL2	16	.63	20	.79	11	.433	80	3.15	110	4.331	NG2R	0,41	.90

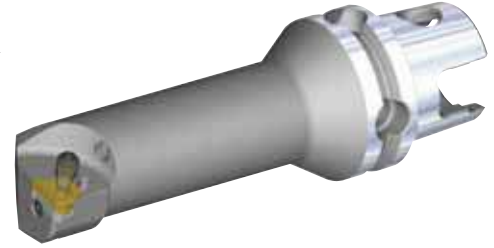
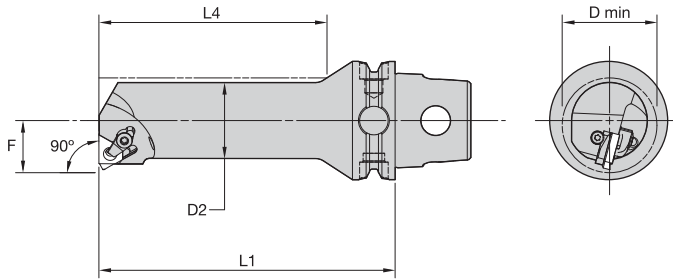
■ Spare Parts

catalog number	clamp	clamp screw
right hand		
KM40TSE16JNER2	CM146	MS1488
left hand		
KM40TSE16JNEL2	CM147	MS1488





KM40TS Internal Cutting Units



■ LSE 90°

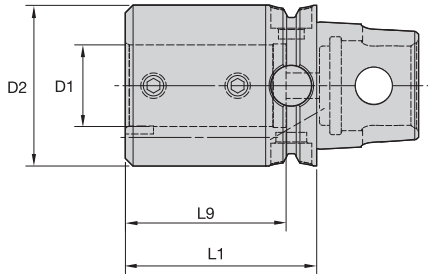
order number	catalog number	D2		D min		F		L4		L1		gage insert	kg	lbs
		mm	in	mm	in	mm	in	mm	in	mm	in			
right hand														
3955464	KM40TSS10DLSER11	10	.39	13	.51	7	.276	35	1.38	60	2.362	LT11NR	0,22	.49
3955466	KM40TSS12ELSER11	12	.47	16	.63	9	.354	42	1.66	70	2.756	LT11NR	0,25	.56
3955468	KM40TSS16FLSER16	16	.63	20	.79	11	.433	56	2.21	80	3.150	LT16NR	0,28	.61
3955470	KM40TSS20GLSER16	20	.79	25	.98	13	.512	70	2.76	90	3.543	LT16NR	0,34	.75
3955472	KM40TSS25HLSER16	25	.98	32	1.26	17	.669	75	2.95	100	3.937	LT16NR	0,50	1.11
3955474	KM40TSS32JLSER16	32	1.26	40	1.57	22	.866	96	3.78	110	4.331	LT16NR	0,72	1.58
3955476	KM40TSS32JLSER22	32	1.26	40	1.57	22	.866	96	3.78	110	4.331	LT22NR	0,71	1.56
left hand														
3955463	KM40TSS10DLSEL11	10	.39	13	.51	7	.276	35	1.38	60	2.362	LT11NL	0,22	.49
3955465	KM40TSS12ELSEL11	12	.47	16	.63	9	.354	42	1.65	70	2.756	LT11NL	0,25	.55
3955467	KM40TSS16FLSEL16	16	.63	20	.79	11	.433	56	2.21	80	3.150	LT16NL	0,28	.61
3955469	KM40TSS20GLSEL16	20	.79	25	.98	13	.512	70	2.76	90	3.543	LT16NL	0,34	.75
3955471	KM40TSS25HLSSEL16	25	.98	32	1.26	17	.669	75	2.95	100	3.937	LT16NL	0,50	1.11
3955473	KM40TSS32JLSEL16	32	1.26	40	1.57	22	.866	96	3.78	110	4.331	LT16NL	0,72	1.58
3955475	KM40TSS32JLSEL22	32	1.26	40	1.57	22	.866	96	3.78	110	4.331	LT22NL	0,71	1.56

■ Spare Parts



catalog number	insert screw	shim	shim screw	clamp assembly
right hand				
KM40TSS10DLSER11	SSN2T	—	—	—
KM40TSS12ELSER11	SSN2T	—	—	—
KM40TSS16FLSER16	SN3TPKG	—	—	—
KM40TSS20GLSER16	SSA3T	SMYI3	SSY3T	CKC3
KM40TSS25HLSER16	SSA3T	SMYI3	SSY3T	CKC3
KM40TSS32JLSER16	SSA3T	SMYI3	SSY3T	CKC3
KM40TSS32JLSER22	SSA4T	SMYI4	SSY4T	CKC4
left hand				
KM40TSS10DLSEL11	SSN2T	—	—	—
KM40TSS12ELSEL11	SSN2T	—	—	—
KM40TSS16FLSEL16	SN3TPKG	—	—	—
KM40TSS20GLSEL16	SSA3T	SMYE3	SSY3T	CKC3
KM40TSS25HLSSEL16	SSA3T	SMYE3	SSY3T	CKC3
KM40TSS32JLSEL16	SSA3T	SMYE3	SSY3T	CKC3
KM40TSS32JLSEL22	SSA4T	SMYE4	SSY4T	CKC4

NOTE: Items listed without a shim are designed for a 1.5° inclination angle.
Cutting units are supplied with insert screw and clamp assembly. However, tools are designed to use either the insert screw or the clamp assembly, not both.



■ BA • Boring Bar Adapter • Internal and External Coolant • Metric



order number	catalog number	D1	D2	L1	L9	clamp screw	wrench size clamp screw	Nm	kg
3950818	KM40TSBA06050M	6	40	50	36	MS1210	2,5mm	3	0,50
3950819	KM40TSBA08050M	8	40	50	36	MS1210	2,5mm	3	0,50
3950820	KM40TSBA10060M	10	40	60	48	MS1211	4mm	12	0,58
3950821	KM40TSBA12065M	12	40	65	52	MS1211	4mm	12	0,61
3950822	KM40TSBA16070M	16	40	70	55	MS1081	5mm	25	0,61
3950823	KM40TSBA20075M	20	40	75	58	MS1213	5mm	25	0,60
3950824	KM40TSBA25075M	25	50	75	56	MS1081	5mm	25	0,87

■ BA • Boring Bar Adapter • Internal and External Coolant • Inch

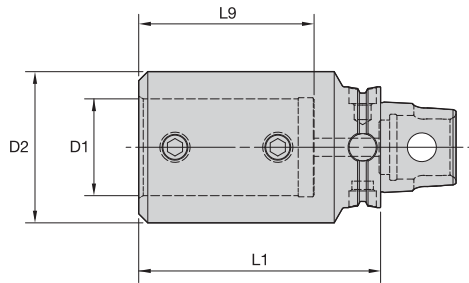


order number	catalog number	D1	D2	L1	L9	clamp screw	wrench size clamp screw	ft. lbs.	lbs
3950813	KM40TSBA06236	3/8	1.58	2.362	1.89	S843	1/8	5	1.27
3950814	KM40TSBA08256	1/2	1.58	2.559	2.05	S852	5/32	10	1.33
3950815	KM40TSBA10276	5/8	1.58	2.756	2.17	S862	3/16	15	1.35
3950816	KM40TSBA12295	3/4	1.58	2.953	2.28	S862	3/16	15	1.37
3950817	KM40TSBA16295	1	1.97	2.953	2.21	S862	3/16	15	1.90

NOTE: Do not overtighten clamp screw; use torque recommendations above.
 Supplied with clamp screw.
 Clamp screw wrench not included.



KM40TS Shank Tools



■ BAI • Boring Bar Adapter • Internal Coolant Only • Metric



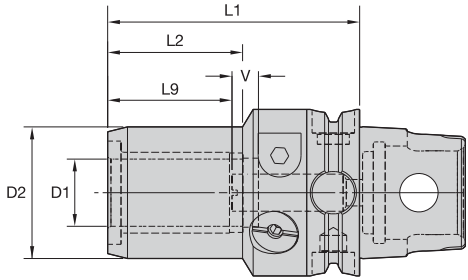
order number	catalog number	D1	D2	L1	L9	clamp screw	wrench size clamp screw	Nm	kg
3950158	KM40TSBAI32080M	32	50	80	58	MS1213	5mm	25	0,81
3950159	KM40TSBAI40090M	40	58	90	68	MS1213	5mm	25	1,04

■ BAI • Boring Bar Adapter • Internal Coolant Only • Inch



order number	catalog number	D1	D2	L1	L9	clamp screw	wrench size clamp screw	ft. lbs.	lbs
3950156	KM40TSBAI20315	1 1/4	1.97	3.150	2.28	S861	3/16	15	1.78
3950157	KM40TSBAI24354	1 1/2	2.28	3.543	2.68	S861	3/16	15	2.43

NOTE: Do not overtighten clamp screw; use torque recommendations above.
Supplied with clamp screw.
Clamp screw wrench not included.



■ HC • Metric



order number	catalog number	D1	D2	L1	L2	L9	V	actuation wrench	wrench size actuation screw	length adjustment wrench	wrench size stop screw	kg
3960498	KM40TSHC06065M	6	26	65	34	27	10	170.135	5mm	170.002	2,5mm	0,43
3960499	KM40TSHC08065M	8	28	65	34	27	10	170.135	5mm	170.002	2,5mm	0,44
3960500	KM40TSHC10070M	10	30	70	38	31	10	170.135	5mm	170.002	2,5mm	0,49
3960501	KM40TSHC12075M	12	32	75	41	36	10	170.135	5mm	170.002	2,5mm	0,53

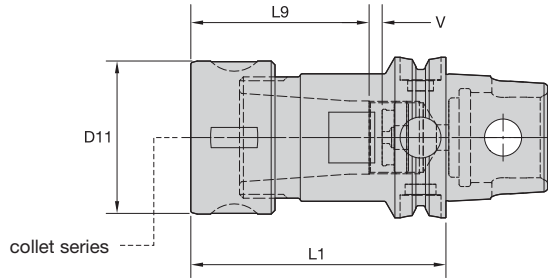
■ HC • Inch



order number	catalog number	D1	D2	L1	L2	L9	V	actuation wrench	wrench size actuation screw	length adjustment wrench	wrench size stop screw	lbs
3960497	KM40TSHC050300	1/2	1.24	3.000	1.75	1.42	.39	170.135	5mm	170.002	2,5mm	1.16

NOTE: Do not overtorque clamp screw. Tighten by hand until stop is felt.
Hydraulic chuck technical section, see page K60.
Reduction sleeves are available and must be ordered separately; see page I2.
Wrenches must be ordered separately.

- Tremendous Grip (3:1 advantage).



KM40TS Shank Tools



TG collet series	Collet Capacity			
	mm		inch	
	min	max	min	max
TG75	2,6	20,0	3/64	3/4
TG100	2,6	25,5	5/64	1

■ Collet Chuck • Round Nut

order number	catalog number	collet series	D11		L1		L9		V		kg	lbs
			mm	in	mm	in	mm	in	mm	in		
3969764	KM40TSTG075075M	TG75	50	1.97	75	2.953	53	2.09	2	.08	0,64	1.41
3969765	KM40TSTG100100M	TG100	60	2.36	100	3.937	69	2.72	5	.20	1,17	2.58

■ Spare Parts



catalog number	locknut	wrench	Nm	ft. lbs.	stop screw	wrench size stop screw
KM40TSTG075075M	LNA075M	HSW45M	136	100	SS081041G	4mm & 5/32
KM40TSTG100100M	LNA100M	HSW58M	203	150	SS112041G	4mm & 5/32

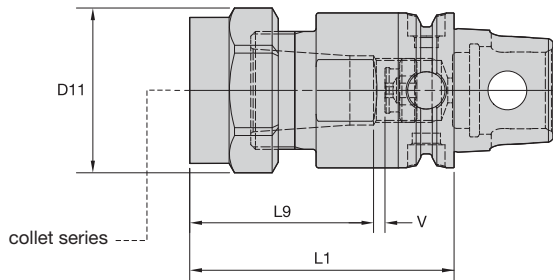
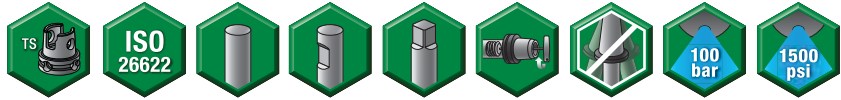
(continued)

KM40TS™ Shank Tools

TG Single-Angle Collet Chucks



(Collet Chuck continued)



KM40TS Shank Tools

TG collet series	Collet Capacity			
	mm		inch	
	min	max	min	max
TG75	2,6	20,0	3/64	3/4
TG100	2,6	25,5	5/64	1

■ Collet Chuck • Hex Nut

order number	catalog number	collet series	D11		L1		L9		V		kg	lbs
			in	mm	in	mm	in	mm	in	mm		
3969763	KM40TSTG075316	TG75	53	2.09	80	3.161	58	2.28	2	.08	0,63	1.39
3969766	KM40TSTG100417	TG100	62	2.44	106	4.173	75	2.95	5	.20	1,21	2.67

■ Spare Parts



catalog number	locknut	wrench	Nm	ft. lbs.	stop screw	wrench size stop screw
KM40TSTG075316	NPA075	OEW188	136	100	SS081041G	4mm & 5/32
KM40TSTG100417	NPA100	OEW225	203	150	SS112041G	4mm & 5/32

NOTE: Collet must be loaded into locknut first. Before loading into the chuck body, insert the cutting tool, then tighten to the recommended tightening torque.

Collet chuck technical section, see page K74.

Supplied with locknut and stop screw.

Locknut wrench must be ordered separately.

Interchangeable locknuts, coolant-style locknuts, and coolant disks are available and must be ordered separately; see page J6.

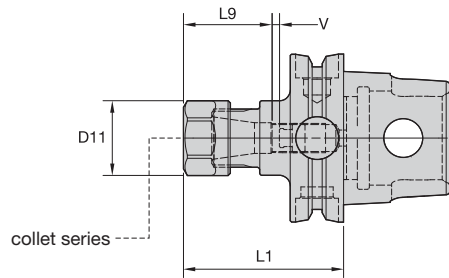
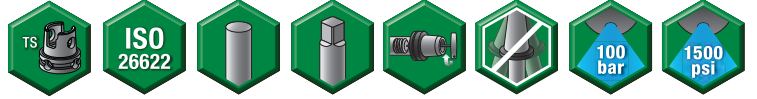
Stop screw coolant caps are available and must be ordered separately; see page J22.

Balanceable/Interchangeable locknuts are available and must be ordered separately; see page J3.

TG standard straight-bore collets, see page I10.

TG tap collets, see page I10.

- Grip (2:1 advantage).



KM40TS Shank Tools

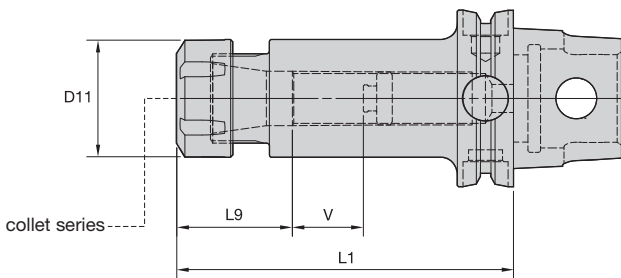
ER collet series	Collet Capacity			
	mm		inch	
	min	max	min	max
ER16	0,5	10,0	.02	.41

■ Collet Chuck • Hex Nut



order number	catalog number	collet series	D11		L1		L9		V		locknut	wrench	straight collet torque		counterbore collet torque		kg	lbs
			mm	in	mm	in	mm	in	mm	in			Nm	ft. lbs.	Nm	ft. lbs.		
3950246	KM40TSER16038M	ER16	28	1.10	38	1.496	32,8	1.29	—	—	LNHSER16M	OEW25M	56	42	384	30	0,20	.44

NOTE: Collet must be loaded into locknut first. Before loading into the chuck body, insert the cutting tool, then tighten to the recommended tightening torque.
Collet chuck technical section, see page K74.
Supplied with locknut and stop screw.
Locknut wrench must be ordered separately.
Interchangeable coolant-style locknuts and coolant disks are available and must be ordered separately; see page J9.
Stop screw coolant caps are available and must be ordered separately; see page J22.
ER standard straight-bore collets, see page I50.
ER tap collets, see page I58.
ER TCT tension-only tap collets, see page I60.



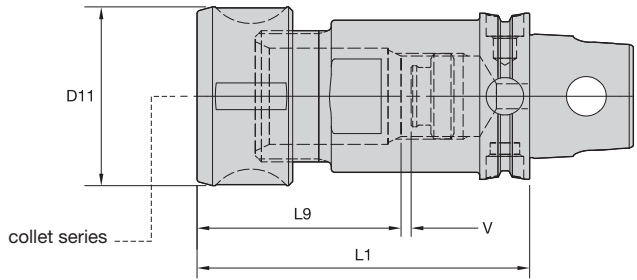
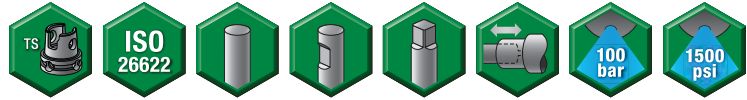
ER collet series	Collet Capacity			
	mm		inch	
	min	max	min	max
ER25	1,0	16,0	.04	.63
ER32	2,0	20,0	.08	.81

■ Collet Chuck • Round Nut



order number	catalog number	collet series	D11		L1		L9		V		locknut	wrench	Nm	ft. lbs.	kg	lbs
			mm	in	mm	in	mm	in	mm	in						
3950247	KM40TSER25045M	ER25	42	1.65	45	1.772	41,2	1.62	—	—	LNSER25M	ER25WM	104	77	0,29	.64
3950248	KM40TSER32060M	ER32	50	1.97	60	2.362	47,3	1.86	—	—	LNSER32M	ER32WM	136	100	0,46	1.01

- Grip 1:1.



DA collet series	mm		inch	
	min	max	min	max
200DA	0,2	10,0	1/64	25/64
180DA	2,2	20,0	1/64	3/4

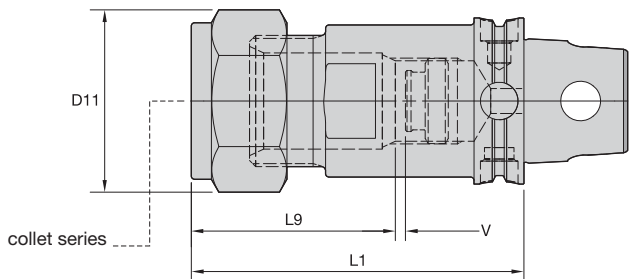
■ Collet Chuck • Round Nut

order number	catalog number	collet series	D11		L1		L9		V		kg	lbs
			mm	in	mm	in	mm	in	mm	in		
3950189	KM40TSDA188065M	DA180	43	1.69	65	2.559	49,0	1.93	—	—	0,48	1.05
3950190	KM40TSDA188080M	DA180	43	1.69	80	3.150	49,0	1.93	5	.20	0,58	1.28

■ Spare Parts



catalog number	locknut	wrench	Nm	ft. lbs.	stop screw	wrench size stop screw
KM40TSDA188065M	LNA188M	HSW45M	80-100	60-75	—	—
KM40TSDA188080M	LNA188M	HSW45M	80-100	60-75	SS081041G	M4 & 5/32



■ Collet Chuck • Hex Nut

order number	catalog number	collet series	D11		L1		L9		V		kg	lbs
			mm	in	mm	in	mm	in	mm	in		
3950191	KM40TSDA208236	DA200	29	1.15	60	2.362	35,0	1.38	8	.32	0,28	.61
3950187	KM40TSDA188256	DA180	44	1.73	65	2.559	49,0	1.93	—	—	0,39	.85
3950188	KM40TSDA188315	DA180	44	1.73	80	3.150	49,0	1.93	5	.20	0,49	1.09

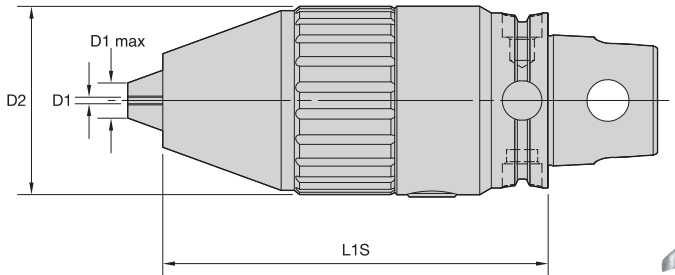
(continued)

(Collet Chuck continued)

■ Spare Parts

catalog number	locknut	wrench	Nm	ft. lbs.	stop screw	wrench size stop screw
KM40TSDA188256	NPA188	OEW150	80-100	60-75	—	—
KM40TSDA188315	NPA188	OEW150	80-100	60-75	SS081041G	M4 & 5/32
KM40TSDA208236	NPA208	OEW100	45-55	32-40	SS038031G	M2 & 5/64

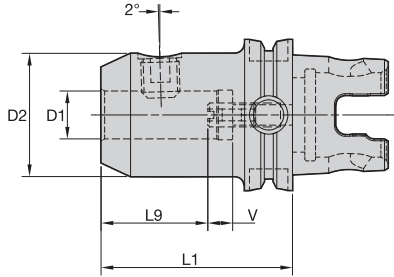
NOTE: Tighten locknut to the recommended tightening torque.
Collet chuck technical section, see page K74.
Supplied with locknut and stop screw.
Locknut wrench must be ordered separately.
Stop screw coolant caps are available and must be ordered separately; see page J22.
DA standard straight-bore collets, see page I63.
DA non-pullout collets, see page I65.



■ RDC • Drill Chucks

order number	catalog number	D1		D1 max		D2		L1S	
		mm	in	mm	in	mm	in	mm	in
4053778	KM40TSRDC13092M	1	.039	13	.512	43	1.693	91,9	3.618

NOTE: Activation size is 6mm.
Activation wrench included.
Wrench reorder number is 170.136.

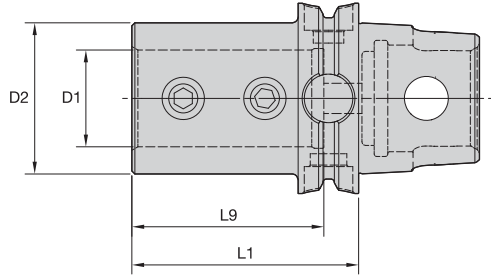


■ WN • Whistle Notch Adapter



order number	catalog number	D1	D2	L1	L9	V	lock screw	wrench size lock screw	Nm	stop screw	wrench size stop screw	kg	lbs
3950205	KM40TSWN06065M	6	25	65	30	10	SS03M012	3mm	7	571.060	2,5mm	0,32	.71
3950206	KM40TSWN08065M	8	28	65	30	10	SS03M014	4mm	15	571.067	3mm	0,37	.81
3950207	KM40TSWN10070M	10	35	70	35	10	SS03M018	5mm	25	571.068	4mm	0,52	1.15
3950208	KM40TSWN12080M	12	42	80	40	10	SS03M023	6mm	35	571.074	5mm	0,78	1.72
3950209	KM40TSWN14080M	14	44	80	40	10	SS03M023	6mm	35	571.074	5mm	0,83	1.84
3950210	KM40TSWN16085M	16	48	85	43	10	SS03M025	6mm	50	571.075	6mm	1,02	2.25
3950211	KM40TSWN18085M	18	50	85	43	10	SS03M025	6mm	50	571.075	6mm	1,08	2.38
3950212	KM40TSWN20095M	20	52	95	45	10	SS03M026	8mm	95	571.076	6mm	1,28	2.83

NOTE: Do not overtighten lock screw; use torque recommendations above.
 Supplied with lock screw and stop screw.
 Lock screw and stop screw wrenches are not included.



■ DAT Adapter • Metric



order number	catalog number	D1	D2	L1	L9	clamp screw	wrench size clamp screw	Nm	cone point socket set screw	wrench size clamp screw	Nm	kg
3904029	KM40TSDAT25075M	25	45	75	60	12166903900	6mm	40	12166903700	6mm	40	0,69

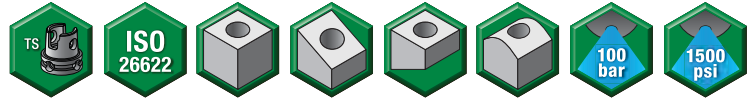
NOTE: Do not overtighten clamp screw; use torque recommendations above.
Supplied with clamping screw.
Clamp screw wrench is not included.

KM40TS™ Shank Tools

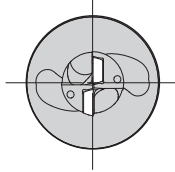
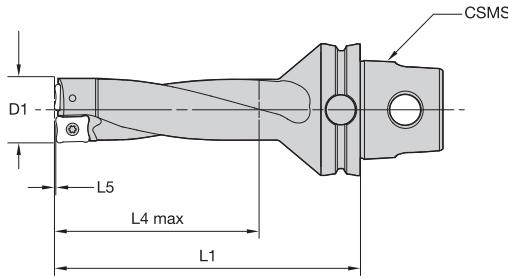
Top Cut™ Drill 3 x D



- Drill shipped with insert screws and Torx wrench.



KM40TS Shank Tools



■ 3 x D • Metric

order number	catalog number	CSMS system size	D1	L1	L4 max	L5	gage insert	insert screw	Torx driver	Torx size
3895545	KM40TSTCD110R3M	KM40TS	11,0	59,0	33,00	0,22	LPGX06T103	12146011800	12146010000	T5
3895546	KM40TSTCD120R3M	KM40TS	12,0	62,0	36,00	0,06	LPGX06T103	12146011800	12146010000	T5
3895547	KM40TSTCD130R3M	KM40TS	13,0	65,0	39,00	0,08	LPGX06T103	12146011800	12146010000	T5
3895548	KM40TSTCD140R3M	KM40TS	14,0	68,0	42,00	0,07	LPGX07T204	12146012500	12147549000	T7
3895549	KM40TSTCD150R3M	KM40TS	15,0	71,0	45,00	0,05	LPGX07T204	12146012500	12147549000	T7
3895550	KM40TSTCD160R3M	KM40TS	16,0	74,0	48,00	0,18	LPGX07T204	12146012500	12147549000	T7
3895551	KM40TSTCD170R3M	KM40TS	17,0	79,0	51,00	0,31	LPGX07T204	12146012500	12147549000	T7
3895552	KM40TSTCD180R3M	KM40TS	18,0	82,0	54,00	0,31	LPGX07T204	12146012500	12147549000	T7
3895653	KM40TSTCD190R3M	KM40TS	19,0	85,0	57,00	0,06	LPGX100308	12148068700	12148086600	T8
3895654	KM40TSTCD200R3M	KM40TS	20,0	88,0	60,00	0,10	LPGX100308	12148068700	12148086600	T8
3895655	KM40TSTCD210R3M	KM40TS	21,0	93,0	63,00	0,28	LPGX100308	12148068700	12148086600	T8
3895656	KM40TSTCD220R3M	KM40TS	22,0	96,0	66,00	0,28	LPGX100308	12148068700	12148086600	T8
3895657	KM40TSTCD230R3M	KM40TS	23,0	99,0	69,00	0,45	LPGX100308	12148068700	12148086600	T8
3895658	KM40TSTCD240R3M	KM40TS	24,0	102,0	72,00	0,45	LPGX100308	12148068700	12148086600	T8
3895659	KM40TSTCD250R3M	KM40TS	25,0	106,0	75,00	0,45	LPGX100308	12148068700	12148086600	T8

■ 3 x D • Inch

order number	catalog number	CSMS system size	D1	L1	L4 max	L5	gage insert	insert screw	Torx driver	Torx size
3898334	KM40TSTCD0438R3	KM40TS	.438	2.375	1.314	.009	LPGX06T103	12146011800	12146010000	T5
3898335	KM40TSTCD0469R3	KM40TS	.469	2.500	1.407	.009	LPGX06T103	12146011800	12146010000	T5
3898336	KM40TSTCD0500R3	KM40TS	.500	2.500	1.500	.002	LPGX06T103	12146011800	12146010000	T5
3898337	KM40TSTCD0531R3	KM40TS	.531	2.625	1.593	.003	LPGX06T103	12146011800	12146010000	T5
3898338	KM40TSTCD0563R3	KM40TS	.563	2.750	1.689	.003	LPGX07T204	12146012500	12147549000	T7
3898339	KM40TSTCD0594R3	KM40TS	.594	2.875	1.782	.002	LPGX07T204	12146012500	12147549000	T7
3898340	KM40TSTCD0625R3	KM40TS	.625	3.000	1.875	.002	LPGX07T204	12146012500	12147549000	T7
3898341	KM40TSTCD0656R3	KM40TS	.656	3.125	1.968	.007	LPGX07T204	12146012500	12147549000	T7
3898342	KM40TSTCD0688R3	KM40TS	.688	3.250	2.064	.012	LPGX07T204	12146012500	12147549000	T7
3898353	KM40TSTCD0719R3	KM40TS	.719	3.375	2.157	.012	LPGX07T204	12146012500	12147549000	T7
3898354	KM40TSTCD0750R3	KM40TS	.750	3.500	2.250	.002	LPGX100308	12148068700	12148086600	T8
3898370	KM40TSTCD0813R3	KM40TS	.813	3.875	2.439	.004	LPGX100308	12148068700	12148086600	T8
3898371	KM40TSTCD0875R3	KM40TS	.875	4.000	2.625	.011	LPGX100308	12148068700	12148086600	T8
3898372	KM40TSTCD0938R3	KM40TS	.938	4.250	2.814	.018	LPGX100308	12148068700	12148086600	T8
3898373	KM40TSTCD1000R3	KM40TS	1.000	4.375	3.000	.018	LPGX100308	12148068700	12148086600	T8



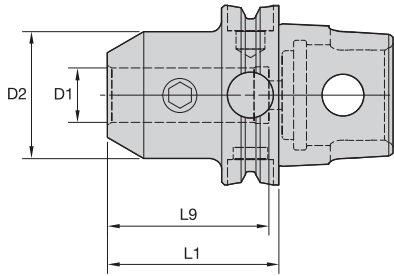
WARNING

During through-hole operations, a slug or disk is produced as the tool breaks through the workpiece. When the drill is stationary and the workpiece is rotating, this slug may be hurled from the chuck by centrifugal force. Provide adequate shielding to protect bystanders.





KM40TS Shank Tools



■ EM • Metric



order number	catalog number	D1	D2	L1	L9	lock screw	wrench size lock screw	Nm	kg
3950196	KM40TSEM06045M	6	25	45	40	SS03M012	3mm	7	0,25
3950197	KM40TSEM08045M	8	28	45	40	SS03M014	4mm	15	0,28
3950198	KM40TSEM10050M	10	35	50	45	SS03M018	5mm	25	0,38
3950199	KM40TSEM12055M	12	42	55	50	SS03M023	6mm	35	0,52
3950200	KM40TSEM16060M	16	48	60	53	SS03M025	6mm	50	0,68
3950201	KM40TSEM20065M	20	52	65	55	SS03M026	8mm	95	0,81

■ EM • Inch



order number	catalog number	D1	D2	L1	L9	lock screw	wrench size lock screw	ft. lbs.	lbs
3950139	KM40TSEM038197	3/8	1.00	1.969	1.73	ELS038031PKG	3/16	15	.58
3950140	KM40TSEM050216	1/2	1.38	2.165	1.97	ELS044038PKG	7/32	20	.84
3950141	KM40TSEM062236	5/8	1.63	2.362	2.09	ELS056050PKG	1/4	40	1.16
3950142	KM40TSEM075256	3/4	1.75	2.559	2.22	ELS062050PKG	5/16	70	1.35

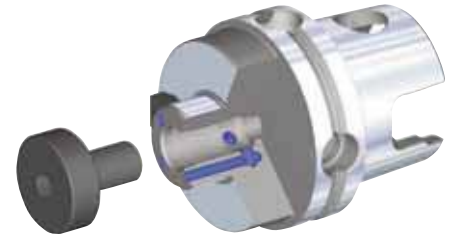
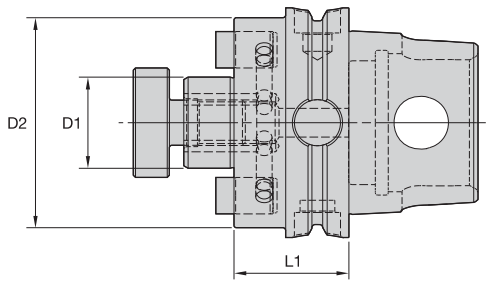
NOTE: Do not overtighten lock screw; use torque recommendations above.
 Supplied with lock screw.
 Lock screw wrench not included.

KM40TS™ Shank Tools

SMC Shell Mill Adapters with Through Coolant



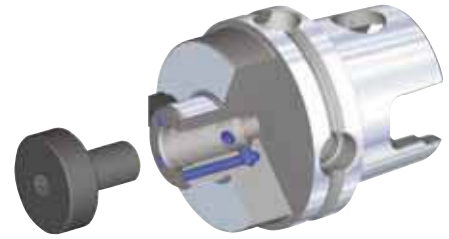
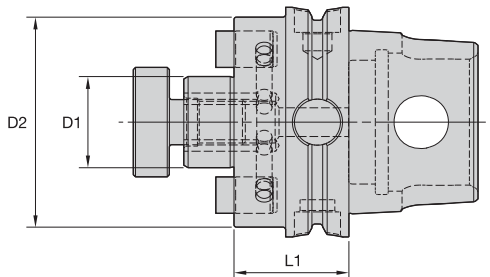
KM40TS Shank Tools



■ SMC • Metric



order number	catalog number	D1	D2	L1	lock screw	drive key	wrench size lock screw	kg
3950261	KM40TSSMC16026M	16	44	26	MS1294	KDK16M	6mm	0,34
3950262	KM40TSSMC22028M	22	49	28	MS1234	KDK22M	8mm	0,44
3950263	KM40TSSMC27032M	27	60	32	KLSS27M	KDK27M	10mm	0,68



■ SMC/SM2C • Inch



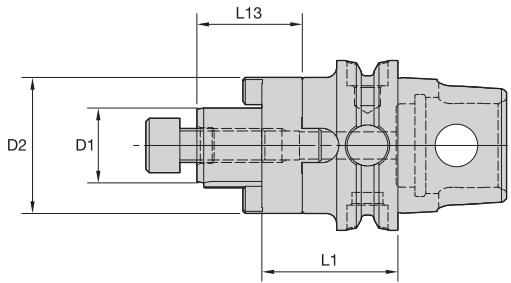
order number	catalog number	D1	D2	L1	lock screw	drive key	wrench size lock screw	lbs
3950256	KM40TSSMC050102	1/2	1.44	1.024	KLS05	KDK04	3/16	.63
3950257	KM40TSSM2C075102	3/4	1.46	1.024	KLS07	—	1/4	.71
3950258	KM40TSSMC075102	3/4	1.75	1.024	KLS07	KDK05	1/4	.82
3950259	KM40TSSM2C100126	1	2.19	1.260	KLS10	KDK06	5/16	1.33
3950260	KM40TSSMC100126	1	2.75	1.260	KLS10	KDK06	5/16	1.64

NOTE: Do not overtighten lock screw.
 Supplied with lock screw and drive keys.
 Interchangeable coolant-style lock screws are available and must be ordered separately; see page J26.
 Lock screw wrench not included.





KM40TS Shank Tools



■ CS • Metric



order number	catalog number	D1	D2	L1	L13	lock screw	wrench size lock screw	drive ring	key	kg
3951833	KM40TSCS16036M	16	32	36	27	MS1294	6mm	CDR16M	CDK16M	0,33
3951834	KM40TSCS22038M	22	40	38	31	MS1234	8mm	CDR22M	CDK22M	0,47

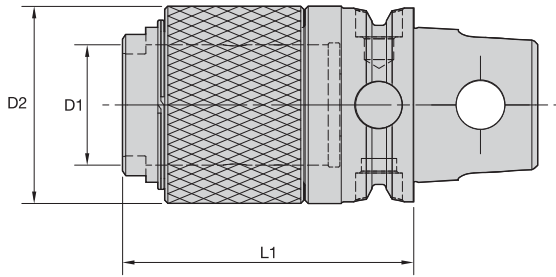
NOTE: Do not overtighten lock screw.
Supplied with lock screw, drive ring, and key.
Lock screw wrench not included.

KM40TS™ Shank Tools

Tap Chucks • Morse Tapers • KM™ Extensions



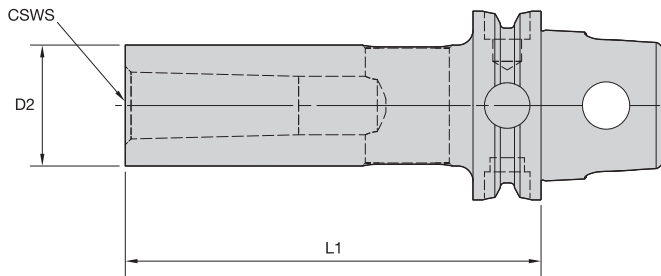
KM40TS Shank Tools



■ ST • Solid Tap Chuck

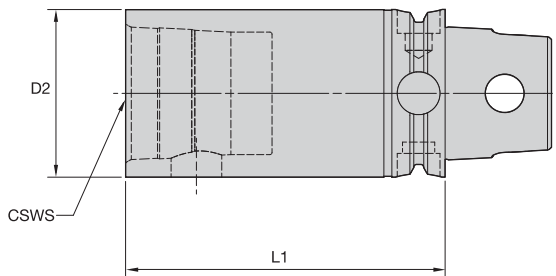
order number	catalog number	TQCS adapter size	D1		D2		L1		kg	lbs
			mm	in	mm	in	mm	in		
3964071	KM40TSST1045M	1	19	.749	35	1.375	45	1.774	0,30	.65
3964072	KM40TSST2070M	2	31	1.222	51	2.000	70	2.758	0,71	1.56

NOTE: Quick-change tap adapters available and must be ordered separately; see page 176.



■ MT • Morse Taper Adapter

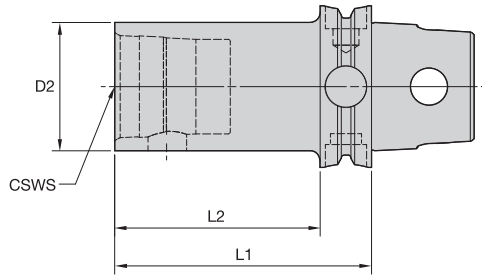
order number	catalog number	CSWS system size	D2		L1		kg	lbs
			mm	in	mm	in		
3950809	KM40TSMT1090M	1	25	.984	90	3.543	0,39	.86
3950810	KM40TSMT2105M	2	32	1.260	105	4.134	0,59	1.30
3950811	KM40TSMT3125M	3	40	1.575	125	4.921	0,95	2.09



■ S • KM Extension

order number	catalog number	CSWS system size	D2		L1		wrench size actuation screw	Nm	ft. lbs.	spare parts package	kg	lbs
			mm	in	mm	in						
3950179	KM40TSS40060M	KM40	40	1.575	60	2.362	6mm	12-16	9-12	KM40PKG3S	0,52	1.15
3950180	KM40TSS40080M	KM40	40	1.575	80	3.150	6mm	12-16	9-12	KM40PKG3S	0,71	1.57



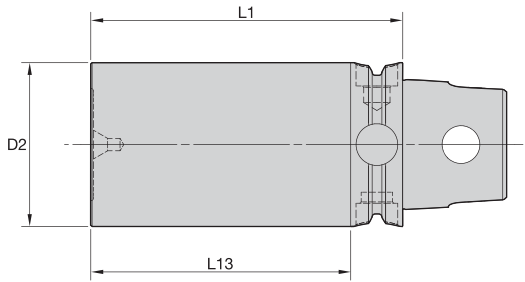


KM40TS Shank Tools

■ S • KM Reducer

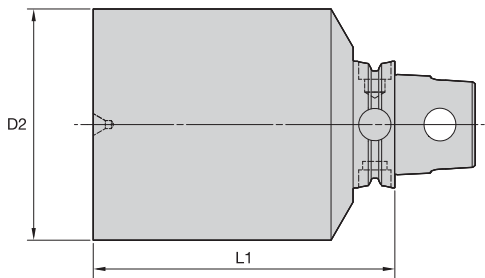


order number	catalog number	CSWS system size	D2		L1		L2		wrench size actuation screw	Nm	ft. lbs.	spare parts package	kg	lbs
			mm	in	mm	in	mm	in						
3950178	KM40TSS32070M	KM32	32	1.260	70	2.756	58	2.284	5mm	8-11	6-8	KM32PKG3S	0,46	1.01



■ GB • Gage Bar

order number	catalog number	D2		L1		L13		kg	lbs
		mm	in	mm	in	mm	in		
3959981	KM40TSGB40080M	40	1.58	80	3.15	68	2.68	0,81	1.79



■ BN • Blank

order number	catalog number	D2		L1		hardness range	kg	lbs
		mm	in	mm	in			
3950194	KM40TSBN63052M	63	2.480	52	2.047	32-38 HRC	1,11	2.45
3950193	KM40TSBN63125M	63	2.480	125	4.921	32-38 HRC	2,89	6.38
3950195	KM40TSBN90052M	90	3.543	52	2.047	32-38 HRC	2,00	4.42