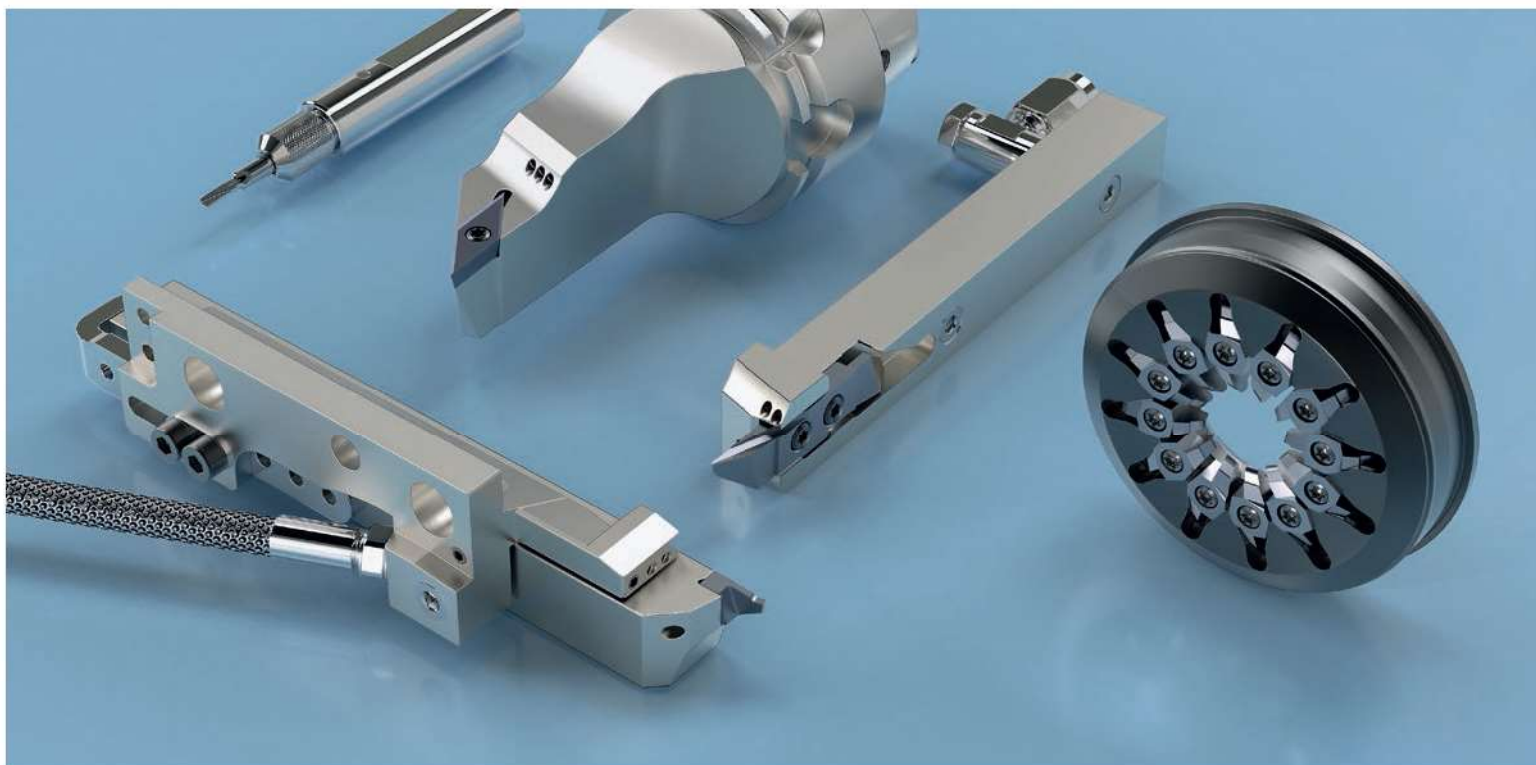


GENERAL CATALOG 2020/21



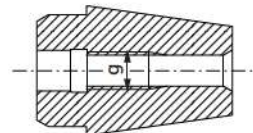
**PRECISION TOOLS
FOR SMALL PART MANUFACTURING AND MICRO-CUTTING**

These collets are made in-house by UTILIS and can be supplied from stock. They are manufactured for universal use with all screw-fitted milling cutters which have the same interface-specific application. To be used as ER adapters they offer several advantages, even by comparison with full carbide shank milling cutters.



Special features and advantages:

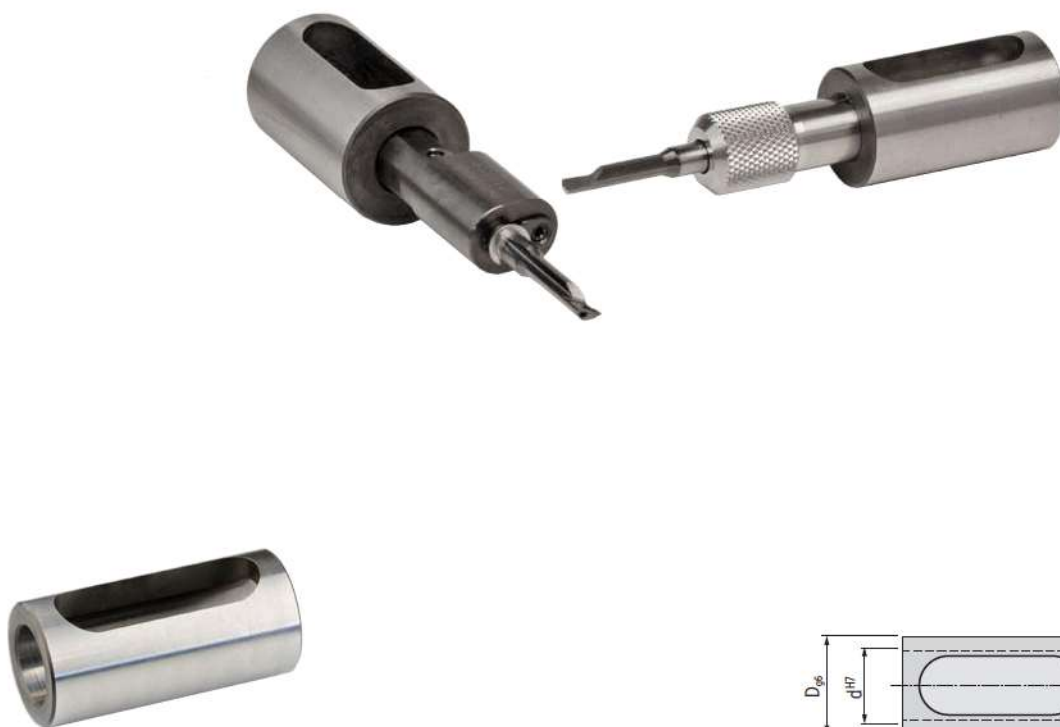
- Short and stable tool clamping
- Suitable for use on both, Swiss type lathes and regular short turning lathes
- Fewer vibrations than carbide endmill (less wear/tool breakage)
- Lower tool costs
- Higher cutting parameters than carbide endmill
- Also suitable for low power machines
- Concentricity <0.005 mm



ER.. EF ..

Order designation		Dimensions					Collet type
		g					
ER16 EF M6	■	M6					ER16
ER16 EF M8	■	M8					ER16
ER16 EF M8-LH	■	M8-LH					ER16
ER16 EF M10	■	M10					ER16
ER20 EF M6	■	M6					ER20
ER20 EF M8	■	M8					ER20
ER20 EF M10	■	M10					ER20
ER20 EF M14-LH	■	M14-LH					ER20
ER25 EF M6	■	M6					ER25
ER25 EF M8	■	M8					ER25
ER25 EF M10	■	M10					ER25
ER32 EF M6	■	M6					ER32
ER32 EF M8	■	M8					ER32
ER32 EF M10	■	M10					ER32

The reduction sleeve gives the possibility fixing small tools in to the machine tool fixtures with bigger diameters. This small investment is an extremely flexible and economic solution giving an independent solution for different tool fixing situations.



MRH ...

Order designation		Dimensions									
		D ₉₆	d ^{H7}	L							
MRH 15875 1230	■	15.875	12	30							
MRH 1600 1230	■	16	12	30							
MRH 1905 0840	■	19.05	8	40							
MRH 1905 1040	■	19.05	10	40							
MRH 1905 1240	■	19.05	12	40							
MRH 1905 1440	■	19.05	14	40							
MRH 1905 1640	■	19.05	16	40							
MRH 2000 1040	■	20	10	40							
MRH 2000 1240	■	20	12	40							
MRH 2000 1640	■	20	16	40							
MRH 2200 1240	■	22	12	40							
MRH 2200 1640	■	22	16	40							
MRH 2500 1240	■	25	12	40							
MRH 2500 1640	■	25	16	40							
MRH 2500 2040	■	25	20	40							
MRH 2540 1240	■	25.4	12	40							
MRH 2540 1640	■	25.4	16	40							
MRH 2540 2040	■	25.4	20	40							
MRH 3300 2040	■	33	20	40							
MRH 3300 2240	■	33	22	40							
MRH 3300 2540	■	33	25	40							

Concentricity < 0.01 mm