

**HAIMER®**  
Quality Wins.

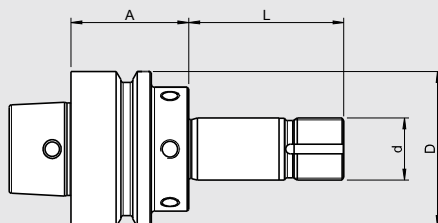


M A S T E R   C A T A L O G

# HAIMER®

# GRINDING WHEEL ADAPTERS

## ISOG GRINDING WHEEL ADAPTER HSK-F50 (WITH ACCESS HOLE) Ø 20 MM FOR SPACERS Ø 40 MM



### CERTIFICATE OF QUALITY

- ☒ All functional surfaces fine machined
- ☒ More accurate than DIN
- ☒ Body with balancing threads
- ☒ Balanced

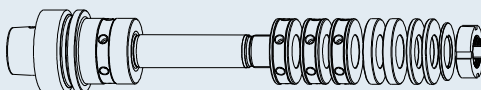
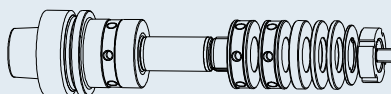
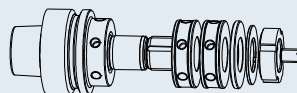
#### Use:

Grinding wheel adapter HSK-F50 (with access hole) / Ø 20 mm suitable for ISOG tool grinding machines for spacers Ø 40 mm

#### Delivery:

Spacer pack, clamping nut, sealing pin, lock plate

Clamping	Ø d [mm]	20
Length A [mm]		38
<b>Order No.</b>	Ø D [mm]	40
	L [mm]	50
	<b>F50.160.20.3</b> incl. spacers + 1 sealing pin (2x L=12, 1x L=3 [mm])	
Length A [mm]		58
<b>Order No.</b>	Ø D [mm]	40
	L [mm]	60
	<b>F50.163.20.3</b> incl. spacers + 1 sealing pin (2x L=12, 1x L=6, 2x L=3 [mm])	
Length A [mm]		58
<b>Order No.</b>	Ø D [mm]	40
	L [mm]	90
	<b>F50.161.20.3</b> incl. spacers + 1 sealing pin (3x L=12, 2x L=6, 2x L=3 [mm])	



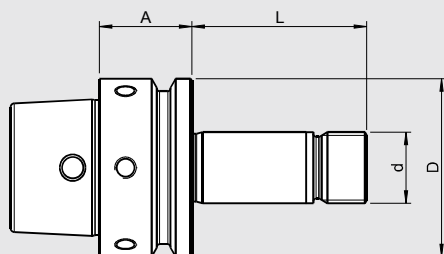
Accessories		
Spacers Ø 40 mm		
Length L [mm]		3
<b>Order No.</b>	<b>999001-1135</b>	*1
Length L [mm]		6
<b>Order No.</b>	<b>999001-1136</b>	*1
Length L [mm]		12
<b>Order No.</b>	<b>999001-1137</b>	*2
Lock plate		
Length		35x20x1.5
<b>Order No.</b>	<b>999001-1134</b>	
Clamping nut		
Thread		M20x1
<b>Order No.</b>	<b>915005-0004</b>	
Set of balancing screws		
<b>Order No.</b>	<b>80.203.00</b>	
Sealing pin - POM/white		
<b>Order No.</b>	<b>900052-0007</b>	M8



## UWS (REINECKER) GRINDING WHEEL ADAPTER HSK-E50 (WITH ACCESS HOLE) Ø 20 MM FOR SPACERS Ø 50 MM

### CERTIFICATE OF QUALITY

- ☒ All functional surfaces fine machined
- ☒ More accurate than DIN
- ☒ Body with balancing threads
- ☒ Balanced



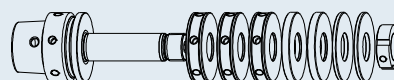
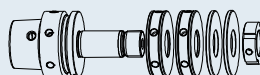
### Use:

Grinding wheel adapter HSK-E50 (with access hole) / Ø 20 mm suitable for Reinecker tool grinding machines for spacers Ø 50 mm

### Delivery:

Spacer pack, clamping nut

Clamping	Ø d [mm]	20
Length A [mm]		26
Order No.	Ø D [mm]	50
	L [mm]	49
	<b>E50.160.20.2</b> Incl. spacers (2x L=12, 2x L=3 [mm])	
Length A [mm]		26
Order No.	Ø D [mm]	50
	L [mm]	74
	<b>E50.163.20.2</b> Incl. spacers (3x L=12, 2x L=6, 2x L=3 [mm])	
Length A [mm]		26
Order No.	Ø D [mm]	50
	L [mm]	109
	<b>E50.161.20.2</b> Incl. spacers (4x L=12, 3x L=6, 2x L=3 [mm])	



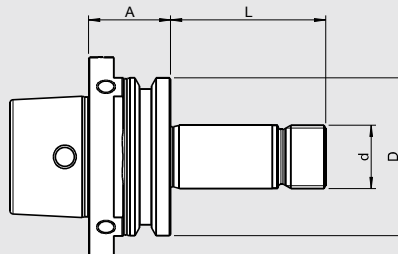
Accessories		
Spacers Ø 50 mm		
Length L [mm]	3	
Order No.	999001-1139	*1
Length L [mm]	6	
Order No.	999001-1140	*1
Length L [mm]	12	
Order No.	999001-1138	*2
Clamping nut		
Thread	M20x1.5	
Order No.	915005-0001	
Set of balancing screws		
Order No.	80.203.00	



\*1= without balancing thread \*2= with balancing thread

See page 521 for additional spacers

## ROLLOMATIC GRINDING WHEEL ADAPTER HSK-E50 (Ø 20 MM WITH ACCESS HOLE) FOR SPACERS Ø 50 MM



### CERTIFICATE OF QUALITY

- ☒ All functional surfaces fine machined
- ☒ More accurate than DIN
- ☒ Body with balancing threads
- ☒ Balanced

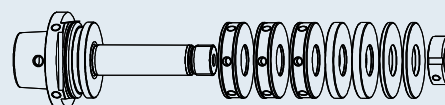
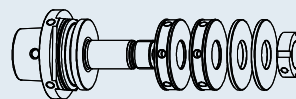
#### Use:

Grinding wheel adapter HSK-E50 (with access hole) / Ø 20 mm suitable for Rollomatic tool grinding machines for spacers Ø 50 mm

#### Delivery:

Spacer pack, clamping nut

Clamping	Ø d [mm]	20
Length A [mm]		26
Order No.	Ø D [mm]	50
	L [mm]	49
	E50.160.20.1 Incl. spacers (2x L=12, 2x L=3 [mm])	
Length A [mm]		26
Order No.	Ø D [mm]	50
	L [mm]	81
	E50.163.20.1 Incl. spacers (3x L=12, 2x L=6, 2x L=3 [mm])	



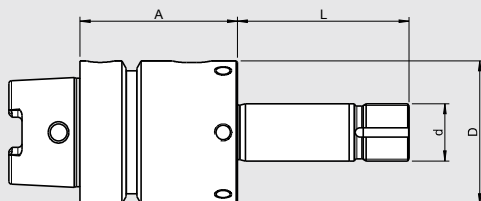
Accessories		
Spacers Ø 50 mm		
Length L [mm]		3
Order No.	999001-1139	*1
Length L [mm]		6
Order No.	999001-1140	*1
Length L [mm]		12
Order No.	999001-1138	*2
Clamping nut		
Thread		M20x1.5
Order No.	915005-0001	
Set of balancing screws		
Order No.	80.203.00	



## WALTER GRINDING WHEEL ADAPTER HSK-C50 Ø 20 MM FOR SPACERS Ø 50 MM

### CERTIFICATE OF QUALITY

- ☒ All functional surfaces fine machined
- ☒ More accurate than DIN
- ☒ Body with balancing threads
- ☒ Balanced



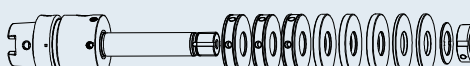
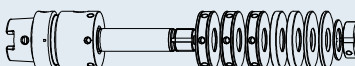
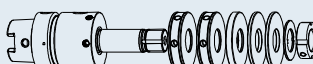
### Use:

Grinding wheel adapter HSK-C50 / Ø 20 mm suitable for Walter tool grinding machines for spacers Ø 50 mm

### Delivery:

Spacer pack, clamping nut, lock plate

Clamping	Ø d [mm]	20
Length A [mm]		55
<b>Order No.</b>	Ø D [mm]	50
	L [mm]	40
Incl. spacers	<b>C50.165.20.4</b> (1x L=12, 1x L=3 [mm])	
Length A [mm]		55
<b>Order No.</b>	Ø D [mm]	50
	L [mm]	60
Incl. spacers	<b>C50.160.20.4</b> (2x L=12, 1x L=6, 2x L=3 [mm])	
Length A [mm]		55
<b>Order No.</b>	Ø D [mm]	50
	L [mm]	85
Incl. spacers	<b>C50.163.20.4</b> (3x L=12, 2x L=6, 2x L=3 [mm])	
Length A [mm]		55
<b>Order No.</b>	Ø D [mm]	50
	L [mm]	100
Incl. spacers	<b>C50.161.20.4</b> (3x L=12, 3x L=6, 2x L=3 [mm])	
Length A [mm]		55
<b>Order No.</b>	Ø D [mm]	50
	L [mm]	120
Incl. spacers	<b>C50.167.20.4</b> (4x L=12, 3x L=6, 2x L=3 [mm])	



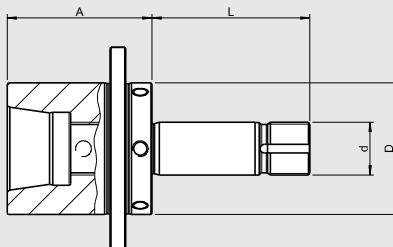
Accessories		
Spacers Ø 50 mm		
Length L [mm]	3	
<b>Order No.</b>	<b>999001-1139</b>	*1
Length L [mm]	6	
<b>Order No.</b>	<b>999001-1140</b>	*1
Length L [mm]	12	
<b>Order No.</b>	<b>999001-1138</b>	*2
Lock plate		
Length L [mm]	35x20x1.5	
<b>Order No.</b>	<b>999001-1134</b>	
Clamping nut		
Thread	M20x1	
<b>Order No.</b>	<b>915005-0004</b>	
Set of balancing screws		
<b>Order No.</b>	<b>80.203.00</b>	



\*1= without balancing thread \*2= with balancing thread

See page 521 for additional spacers

## WALTER GRINDING WHEEL ADAPTER Z50 Ø 20 MM FOR SPACERS Ø 50 MM



### CERTIFICATE OF QUALITY

- ☒ All functional surfaces fine machined
- ☒ Body with balancing threads
- ☒ Balanced

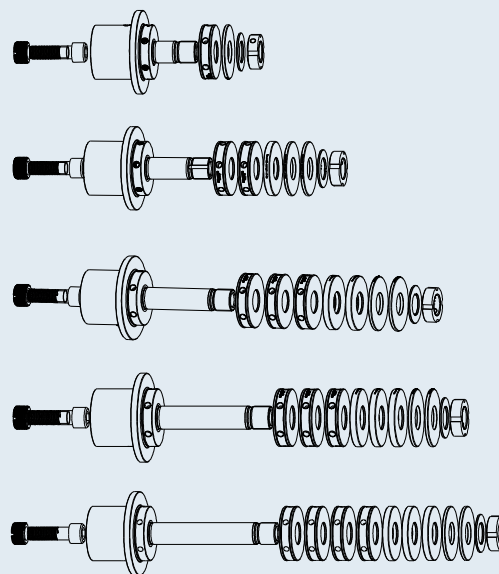
#### Use:

Grinding wheel adapter Z50 / Ø 20 mm suitable for Walter tool grinding machines for spacers Ø 50 mm

#### Delivery:

Spacer pack, clamping nut, lock plate, thread piece, cylinder screw, thread pin

Clamping	Ø d [mm]	20
Length A [mm]		55
Order No.	Ø D [mm] L [mm] <b>Z50.165.20.5</b>	50 40
Incl. spacers	(1x L=12, 1x L=3 [mm])	
Length A [mm]		55
Order No.	Ø D [mm] L [mm] <b>Z50.160.20.5</b>	50 60
Incl. spacers	(2x L=12, 1x L=6, 2x L=3 [mm])	
Length A [mm]		55
Order No.	Ø D [mm] L [mm] <b>Z50.163.20.5</b>	50 85
Incl. spacers	(3x L=12, 2x L=6, 2x L=3 [mm])	
Length A [mm]		55
Order No.	Ø D [mm] L [mm] <b>Z50.161.20.5</b>	50 100
Incl. spacers	(3x L=12, 3x L=6, 2x L=3 [mm])	
Length A [mm]		55
Order No.	Ø D [mm] L [mm] <b>Z50.167.20.5</b>	50 120
Incl. spacers	(4x L=12, 3x L=6, 2x L=3 [mm])	



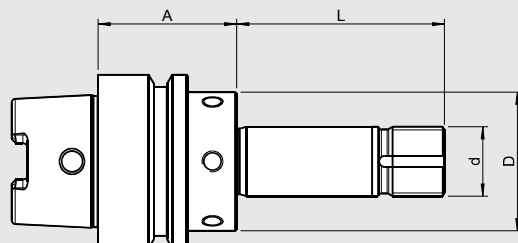
Accessories		
Spacers Ø 50 mm		
Length L [mm]		3
Order No.	<b>999001-1139</b>	*1
Length L [mm]		6
Order No.	<b>999001-1140</b>	*1
Length L [mm]		12
Order No.	<b>999001-1138</b>	*2
Lock plate		
Length L [mm]		35x20x1.5
Order No.	<b>999001-1134</b>	
Clamping nut		
Thread		M20x1
Order No.	<b>915005-0004</b>	
Set of balancing screws		
Order No.	<b>80.203.00</b>	



# SAACKE/VOLLMER GRINDING WHEEL ADAPTER HSK-C50 (WITH GROOVES FOR TOOL CHANGER) Ø 20 MM FOR SPACERS Ø 50 MM

## CERTIFICATE OF QUALITY

- ☒ All functional surfaces fine machined
- ☒ More accurate than DIN
- ☒ Body with balancing threads
- ☒ Balanced



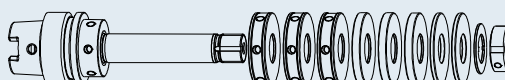
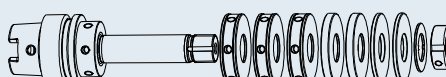
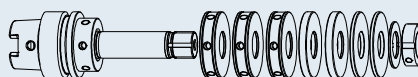
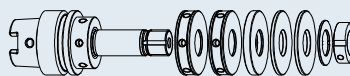
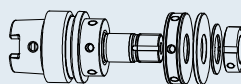
## Use:

Grinding wheel adapter HSK-C50 (with gripper groove for tool changer) /  
Ø 20 mm suitable for Saacke and Vollmer tool grinding machines for spacers  
Ø 50 mm

## Delivery:

Spacer pack, clamping nut, lock plate

Clamping	Ø d [mm]	20
Length A [mm]		40
Order No.	Ø D [mm]	40
Incl. spacers	L [mm]	40
	C50.165.20.6	
	(1x L=12, 1x L=3 [mm])	
Length A [mm]		40
Order No.	Ø D [mm]	40
Incl. spacers	L [mm]	60
	C50.160.20.6	
	(2x L=12, 1x L=6, 2x L=3 [mm])	
Length A [mm]		40
Order No.	Ø D [mm]	40
Incl. spacers	L [mm]	75
	C50.168.20.6	
	(3x L=12, 2x L=6, 2x L=3 [mm])	
Length A [mm]		40
Order No.	Ø D [mm]	40
Incl. spacers	L [mm]	85
	C50.163.20.6	
	(3x L=12, 2x L=6, 2x L=3 [mm])	
Length A [mm]		40
Order No.	Ø D [mm]	40
Incl. spacers	L [mm]	100
	C50.161.20.6	
	(3x L=12, 3x L=6, 2x L=3 [mm])	



## Accessories

### Spacers Ø 50 mm

Length L [mm]		3
Order No.	999001-1139	*1
Length L [mm]		6
Order No.	999001-1140	*1
Length L [mm]		12
Order No.	999001-1138	*2

### Lock plate

Length L [mm]	35x20x1.5
Order No.	999001-1134

### Clamping nut

Thread	M20x1
Order No.	915005-0004

### Set of balancing screws

Order No.	80.203.00
-----------	-----------

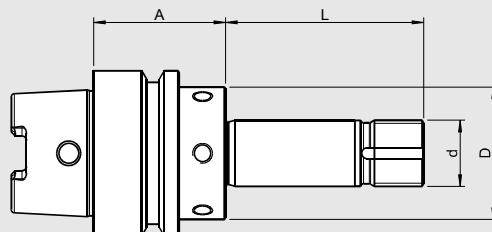


\*1= without balancing thread \*2= with balancing thread

See page 521 for additional spacers



## SCHÜTTE GRINDING WHEEL ADAPTER HSK-C50 (WITH GRIPPER GROOVE HSK-E50) Ø 20 MM FOR SPACERS Ø 50 MM



### CERTIFICATE OF QUALITY

- ☒ All functional surfaces fine machined
- ☒ More accurate than DIN
- ☒ Body with balancing threads
- ☒ Balanced

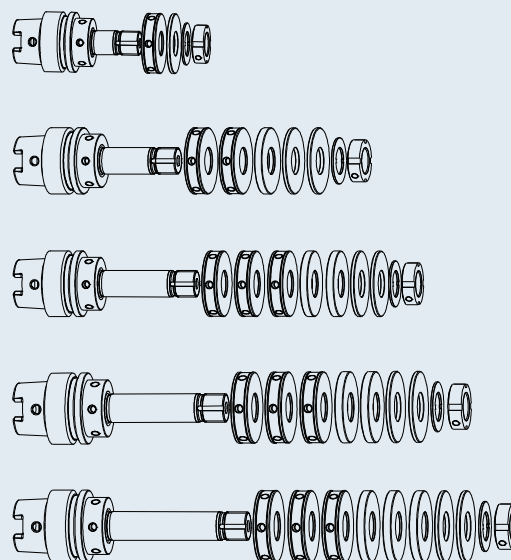
### Use:

Grinding wheel adapter HSK-C50 (with gripper groove HSK-E50) / Ø 20 mm  
suitable for Schütte tool grinding machines (205 series) for spacers Ø 50 mm

### Delivery:

Spacer pack, clamping nut, lock plate

Clamping	Ø d [mm]	20
Length A [mm]		40
Order No.	Ø D [mm]	40
Incl. spacers	L [mm]	40
	<b>C50.165.20.6</b>	
	(1x L=12, 5x L=3 [mm])	
Length A [mm]		40
Order No.	Ø D [mm]	40
Incl. spacers	L [mm]	60
	<b>C50.160.20.6</b>	
	(2x L=12, 1x L=6, 2x L=3 [mm])	
Length A [mm]		40
Order No.	Ø D [mm]	40
Incl. spacers	L [mm]	75
	<b>C50.168.20.6</b>	
	(3x L=12, 2x L=6, 2x L=3 [mm])	
Length A [mm]		40
Order No.	Ø D [mm]	40
Incl. spacers	L [mm]	85
	<b>C50.163.20.6</b>	
	(3x L=12, 2x L=6, 2x L=3 [mm])	
Length A [mm]		40
Order No.	Ø D [mm]	40
Incl. spacers	L [mm]	100
	<b>C50.161.20.6</b>	
	(3x L=12, 3x L=6, 2x L=3 [mm])	



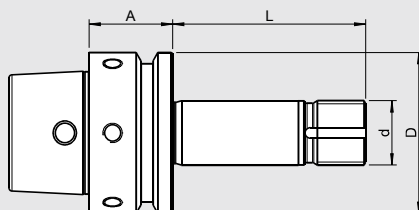
Accessories		
Spacers Ø 50 mm		
Length L [mm]		3
Order No.	<b>999001-1139</b>	*1
Length L [mm]	6	
Order No.	<b>999001-1140</b>	*1
Length L [mm]	12	
Order No.	<b>999001-1138</b>	*2
Lock plate		
Length L [mm]		35x20x1.5
Order No.	<b>999001-1134</b>	
Clamping nut		
Thread		M20x1
Order No.	<b>915005-0004</b>	
Set of balancing screws		
Order No.	<b>80.203.00</b>	



## SCHÜTTE GRINDING WHEEL ADAPTER HSK-E50 (WITH ACCESS BORE) Ø 20 MM FOR SPACERS Ø 50 MM

### CERTIFICATE OF QUALITY

- ☒ All functional surfaces fine machined
- ☒ More accurate than DIN
- ☒ Body with balancing threads
- ☒ Balanced



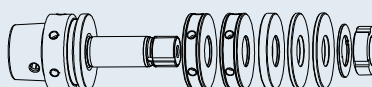
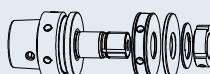
### Use:

Grinding wheel adapter HSK-E50 (with access bore) / Ø 20 mm suitable for Schütte tool grinding machines (305 series) for spacers Ø 50 mm

### Delivery:

Spacer pack, clamping nut, lock plate

Clamping	Ø d [mm]	20
Length A [mm]		26
<b>Order No.</b>	Ø D [mm]	50
	L [mm]	40
Incl. spacers	<b>E50.165.20.8</b> (1x L=12, 1x L=3 [mm])	
Length A [mm]		26
<b>Order No.</b>	Ø D [mm]	50
	L [mm]	55
Incl. spacers	<b>E50.160.20.8</b> (2x L=12, 1x L=6, 2x L=3 [mm])	
Length A [mm]		26
<b>Order No.</b>	Ø D [mm]	50
	L [mm]	85
Incl. spacers	<b>E50.163.20.8</b> (3x L=12, 2x L=6, 2x L=3 [mm])	



Accessories			
Spacers Ø 50 mm			
Length L [mm]		3	*1
<b>Order No.</b>	<b>999001-1139</b>		
Length L [mm]		6	*1
<b>Order No.</b>	<b>999001-1140</b>		
Length L [mm]		12	*2
<b>Order No.</b>	<b>999001-1138</b>		
Lock plate			
Length L [mm]		35x20x1.5	
<b>Order No.</b>	<b>999001-1134</b>		
Clamping nut			
Thread		M20x1	
<b>Order No.</b>	<b>915005-0004</b>		
Set of balancing screws			
<b>Order No.</b>	<b>80.203.00</b>		



\*1= without balancing thread \*2= with balancing thread

See page 521 for additional spacers