

HAIMER®
Quality Wins.



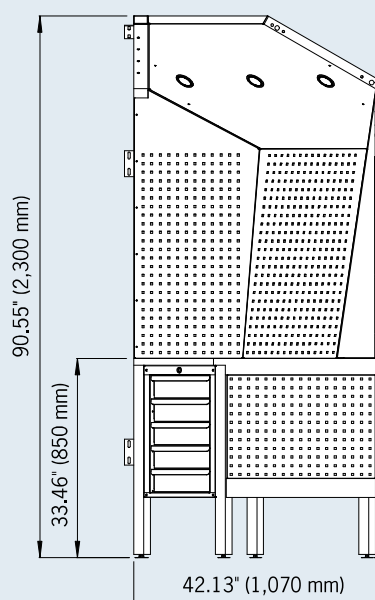
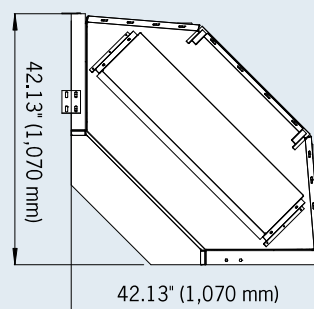
M A S T E R C A T A L O G

HAIMER®

TOOL MANAGEMENT

CORNER MODULE

Corner module with perforated wall

**Use:**

The perforated back wall and drawer unit provide a clean and structured workspace. The three integrated LED spot lights ensure a continually bright and comfortable working atmosphere.

Delivery includes:

– Corner module with a perforated wall, roof with LED lighting, drawer unit

Description

Corner module 4.0

Order No.

84.802.00.3

WORKBENCH ASSEMBLY MODULE



Picture shows: Assembly module with special configuration, Order No. 84.801.03.3

- Use:**
- Freely configurable workbench
 - Individual delivery by using a predefined modular system
- Delivery includes:
- Standard equipment includes perforated back wall, 4 LED spot lights and 4 x 230 V power outlets*

Description	Order No.
Workbench assembly module	84.801.00.3

WORKBENCH ASSEMBLY MODULE – CONFIGURATIONS



Picture shows: Assembly module with screen holder, waste disposal module and paper dispenser



Paper dispenser



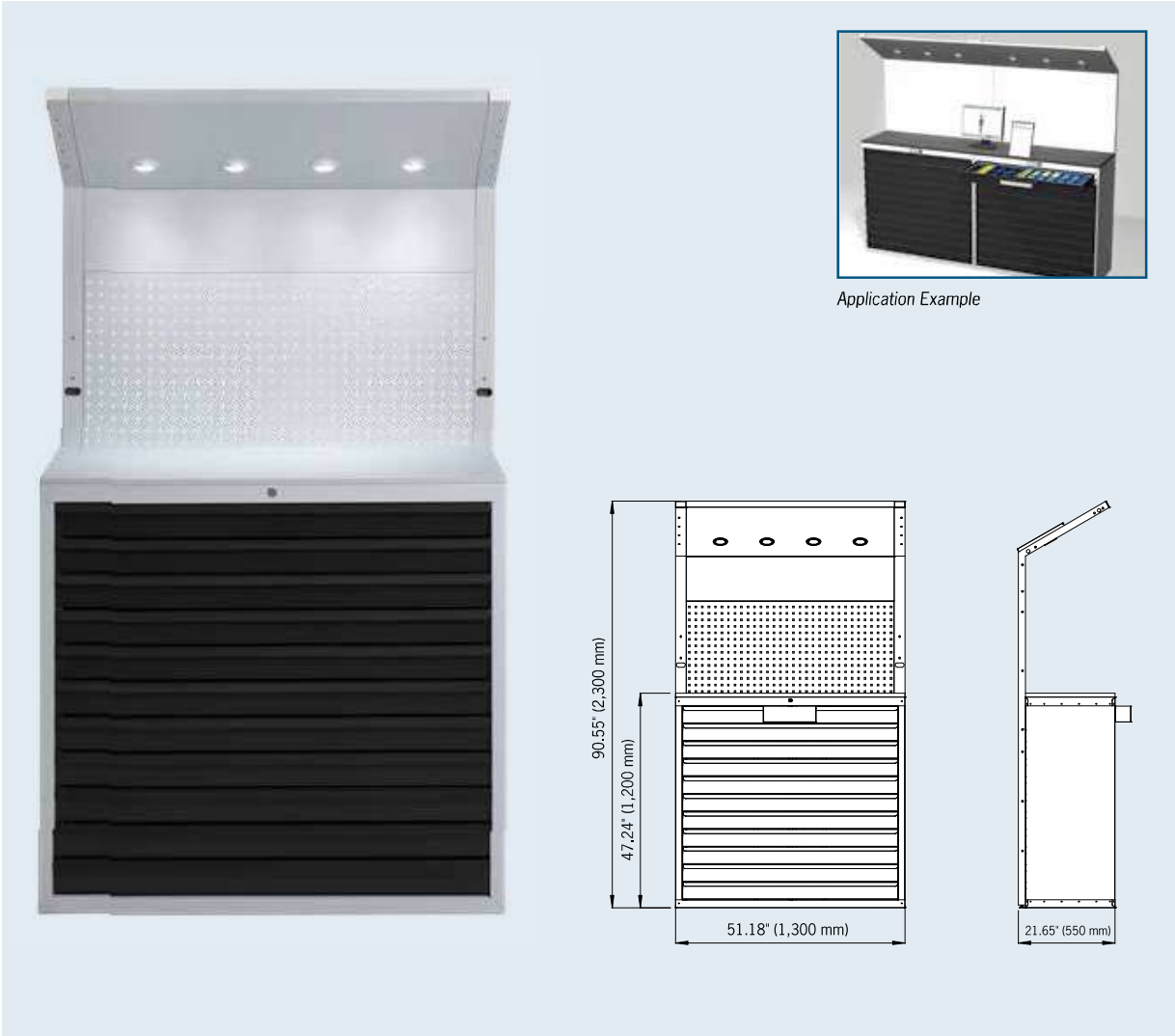
Waste disposal module



Drawer cupboard

Configurations	Order No.
Workbench assembly module with perforated wall	84.801.00.3
Workbench assembly module with drawer cupboard	84.801.01.3
Workbench assembly module with PC holder and screen holder	84.801.02.3
Workbench assembly module with PC holder, screen holder and drawer cupboard	84.801.03.3
Workbench assembly module with paper dispenser	84.801.04.3
Workbench assembly module with drawer cupboard and paper dispenser	84.801.05.3
Workbench assembly module with drawer cupboard, paper dispenser, PC holder and screen holder	84.801.06.3
Workbench assembly module with waste disposal module	84.801.07.3
Workbench assembly module with waste disposal module and paper dispenser	84.801.08.3
Workbench module – removed for Power Clamp Premium	84.807.00.3

MAGAZINE CABINET



Use:
Magazine cabinet for proper storage of tools (inserts, round tools, etc.) and small parts. The perforated wall helps for a clear arrangement of (mounting) tools.
Ergonomical working height at 3.9 ft (1.20 m).

- Delivery includes:
- Magazine cabinet with a standing work area, perforated wall and 4 LED spot lights
 - 11 drawers

Description	Order No.
Magazine cabinet	84.804.00.3
Accessories	Order No.
12 pcs. Drawer equipment (plastic blue) sufficient for 1 drawer at the magazine cabinet	84.810.14
24 pcs. Divider for drawer equipment (synthetic material)	84.810.15

SHELF MODULE



Use:

Shelf module with hood for proper storage of accessories.

Delivery includes:

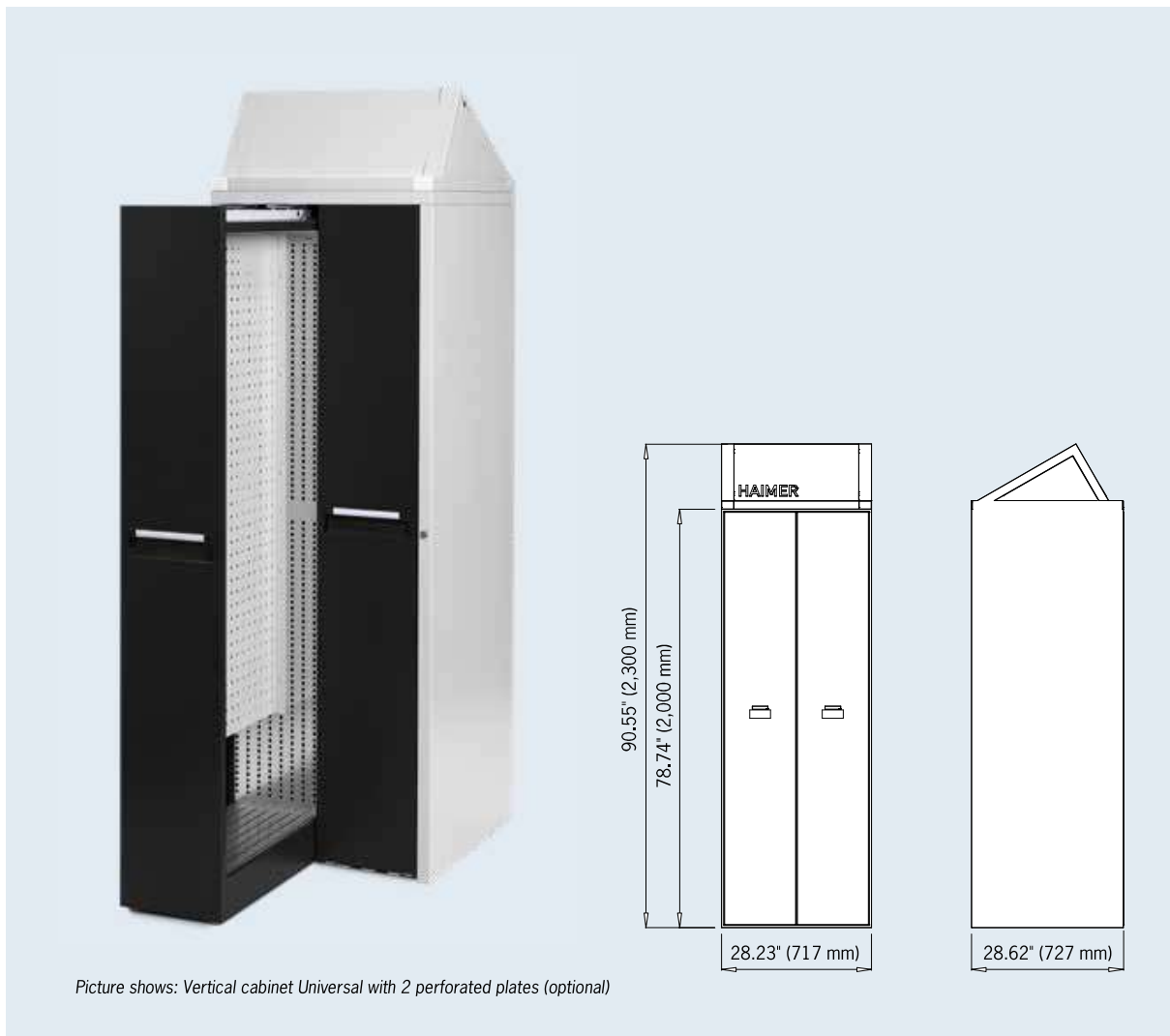
– Equipped as standard with 4 shelf cabinets and 2 LED spot lights

Optional: additional shelf cabinet, shelf cabinet for grinding wheels

Description	Order No.
Shelf module with hood	84.805.01.3

Accessories	Order No.
Shelf for shelf cabinet with stop bar	84.805.00.01.3
Shelf for grinding wheels for shelf cabinet to hold 2 grinding wheels	84.805.00.03.3

VERTICAL CABINET UNIVERSAL



Use:

Pullout cabinets with perforated walls can be equipped on both sides and provide a clean storage area for tools or auxiliary tools. The accessibility from both sides facilitates the removal and localization of the needed tool.

Delivery includes:

- Vertical cabinet Universal (can be equipped with shelf units and perforated plates)

Description

Vertical cabinet Universal

Order No.

84.805.06.3

VERTICAL CABINET TOOL HOLDER



Use:

Safe and space-saving storage of tool holders of all tapers, even with clamped cutting tools. Good accessibility from both sides of the pullouts.

Delivery includes:

- Vertical cabinet for tool holders with 4 pullout cabinets

Additionally available shelf units provide a clean, safe and space-saving storage for your tool holders

Description	Order No.
Vertical cabinet tool holder	84.805.07.3

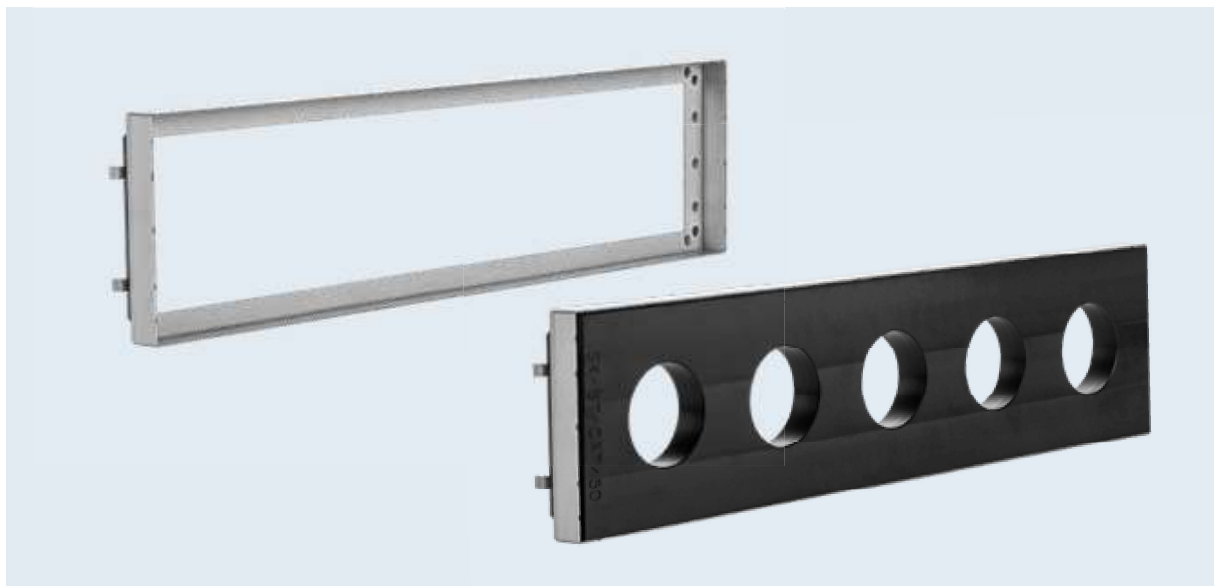
Accessories	Order No.
Shelves for vertical cabinet	See page 737

VERTICAL CABINET TOOL HOLDER – APPLICATION EXAMPLE

This is how you store your tool holders and accessories correctly.



VERTICAL CABINET TOOL HOLDER – SHELVES



Description	Order No.
Frame to hold the shelves in the 4-fold vertical cabinet	84.805.07.01
Frame to hold the shelves in the 2-fold vertical cabinet	84.805.07.02
Frame to hold the shelves in the 2-fold vertical cabinet (extra wide)	84.805.07.03
Shelf SK/BT/CAT	
Shelf to hold 12 SK30/BT30/CAT30 holders	84.805.07.032
Shelf to hold 4 SK40/BT40/CAT40 holders	84.805.07.040
Shelf to hold 6 SK40/BT40/CAT40 holders	84.805.07.041
Shelf to hold 12 SK40/BT40/CAT40 holders	84.805.07.042
Shelf to hold 4 SK50/BT50/CAT50 holders	84.805.07.050
Shelf to hold 5 SK50/BT50/CAT50 holders	84.805.07.051
Shelf HSK	
Shelf to hold 16 HSK-A/C/E 32 holders	84.805.07.132
Shelf to hold 16 HSK-A/C/E 40 holders	84.805.07.140
Shelf to hold 4 HSK-A/C/E 40 holders	84.805.07.141
Shelf to hold 12 HSK-A/C/E 50 holders	84.805.07.150
Shelf to hold 4 HSK-A/C/E 63 holders	84.805.07.163
Shelf to hold 6 HSK-A/C/E 63 holders	84.805.07.164
Shelf to hold 12 HSK-A/C/E 63 holders	84.805.07.165
Shelf to hold 5 HSK-A/C/E 80 holders	84.805.07.181
Shelf to hold 4 HSK-A/C/E 100 holders	84.805.07.110
Shelf to hold 5 HSK-A/C/E 100 holders	84.805.07.111
Shelf to hold 4 HSK-A/C/E 125 holders	84.805.07.125
Other Shelves	
Shelf to hold 12 PSC 32 holders	84.805.07.230
Shelf to hold 12 PSC 40 holders	84.805.07.240
Shelf to hold 12 PSC 50 holders	84.805.07.250
Shelf to hold 6 PSC 63 holders	84.805.07.260
Shelf to hold 4 VDI25 holders	84.805.07.325
Shelf to hold 4 VDI30 holders	84.805.07.330
Shelf to hold 4 VDI40 holders	84.805.07.340
Shelf to hold 5 Makino F-80 holders	84.805.07.680
Shelf to hold 3 balancing adapter	84.805.07.401
Shelf without recess (extra wide)	84.805.07.801

Further shelves available upon request